

Datasheet for ABIN390909

**anti-PLEKHG6 antibody (N-Term)****3** Images[Go to Product page](#)

## Overview

Quantity:	400 µL
Target:	PLEKHG6
Binding Specificity:	AA 60-87, N-Term
Reactivity:	Human
Host:	Rabbit
Clonality:	Polyclonal
Conjugate:	This PLEKHG6 antibody is un-conjugated
Application:	Western Blotting (WB), Immunohistochemistry (Paraffin-embedded Sections) (IHC (p)), Flow Cytometry (FACS)

## Product Details

Immunogen:	This MyoGEF antibody is generated from rabbits immunized with a KLH conjugated synthetic peptide between 60-87 amino acids from the N-terminal region of human MyoGEF.
Clone:	RB21288
Isotype:	Ig Fraction
Purification:	This antibody is purified through a protein A column, followed by peptide affinity purification.

## Target Details

Target:	PLEKHG6
Alternative Name:	MyoGEF ( <a href="#">PLEKHG6 Products</a> )

## Target Details

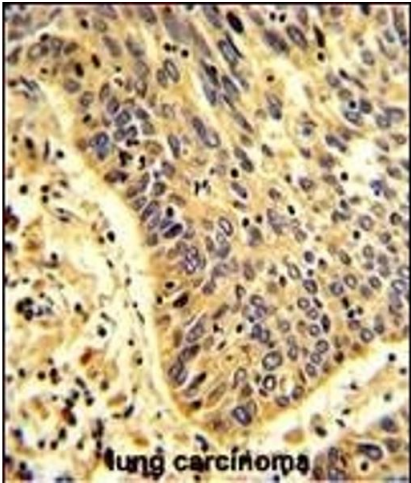
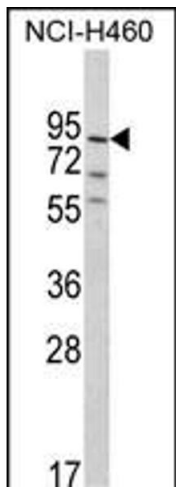
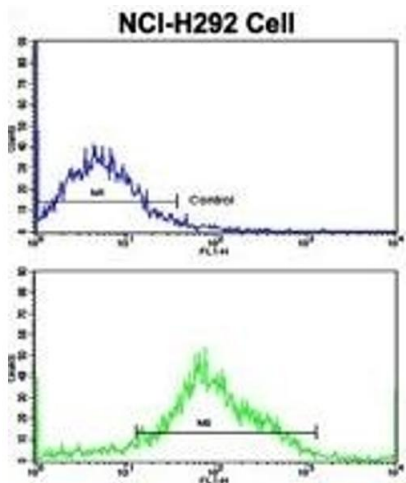
Background:	Guanine nucleotide exchange factor activating the small GTPase RHOA, which, in turn, induces myosin filament formation. It Also activates RHOG and does not activate RAC1, or to a much lower extent than RHOA and RHOG. Its part of a functional unit, involving PLEKHG6, MYH10 and RHOA, at the cleavage furrow to advance furrow ingression during cytokinesis. In epithelial cells, It is required for the formation of microvilli and membrane ruffles on the apical pole. Along with EZR, it is required for normal macropinocytosis.
Gene ID:	55200
NCBI Accession:	<a href="#">NP_001138328</a> , <a href="#">NP_001138329</a> , <a href="#">NP_060643</a>
UniProt:	<a href="#">Q3KR16</a>

## Application Details

Application Notes:	WB: 1:1000. IHC-P: 1:50~100. FC: 1:10~50
Restrictions:	For Research Use only

## Handling

Format:	Liquid
Buffer:	Purified polyclonal antibody supplied in PBS with 0.09 % (W/V) sodium azide.
Preservative:	Sodium azide
Precaution of Use:	This product contains Sodium azide: a POISONOUS AND HAZARDOUS SUBSTANCE which should be handled by trained staff only.
Storage:	4 °C,-20 °C
Storage Comment:	Maintain refrigerated at 2-8 °C for up to 6 months. For long term storage store at -20 °C in small aliquots to prevent freeze-thaw cycles.
Expiry Date:	6 months



### Flow Cytometry

**Image 1.** Flow cytometric analysis of NCI- cells using MyoGEF Antibody (N-term)(bottom histogram) compared to a negative control cell (top histogram). FITC-conjugated goat-anti-rabbit secondary antibodies were used for the analysis.

### Western Blotting

**Image 2.** Western blot analysis of MyoGEF Antibody (N-term) (ABIN390909 and ABIN2841114) in NCI- cell line lysates (35 µg/lane). MyoGEF (arrow) was detected using the purified Pab.

### Immunohistochemistry (Paraffin-embedded Sections)

**Image 3.** Formalin-fixed and paraffin-embedded human lung carcinoma with MyoGEF Antibody (N-term), which was peroxidase-conjugated to the secondary antibody, followed by DAB staining. This data demonstrates the use of this antibody for immunohistochemistry, clinical relevance has not been evaluated.