

Datasheet for ABIN390916  
**anti-PAX6 antibody (AA 183-210)**[Go to Product page](#)

## 4 Images

## Overview

Quantity:	400 µL
Target:	PAX6
Binding Specificity:	AA 183-210
Reactivity:	Human
Host:	Rabbit
Clonality:	Polyclonal
Application:	Western Blotting (WB), Immunofluorescence (IF), Flow Cytometry (FACS), Immunohistochemistry (Paraffin-embedded Sections) (IHC (p))

## Product Details

Immunogen:	This PAX6 antibody is generated from rabbits immunized with a KLH conjugated synthetic peptide between 183-210 amino acids from the Central region of human PAX6.
Clone:	RB21476
Isotype:	IgG
Predicted Reactivity:	B, M, Rat, X
Purification:	This antibody is purified through a protein A column, followed by peptide affinity purification.

## Target Details

Target:	PAX6
Alternative Name:	PAX6 ( <a href="#">PAX6 Products</a> )

## Target Details

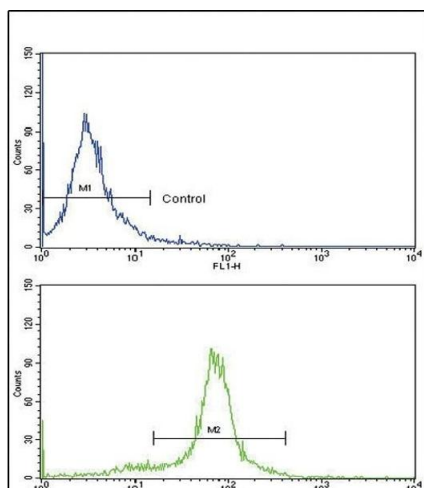
Background:	PAX6 is paired box gene 6, one of many human homologs of the Drosophila melanogaster gene <i>prd</i> . In addition to the hallmark feature of this gene family, a conserved paired box domain, the encoded protein also contains a homeo box domain. Both domains are known to bind DNA, and function as regulators of gene transcription.
Molecular Weight:	46683
Gene ID:	5080
NCBI Accession:	<a href="#">NP_000271</a> , <a href="#">NP_001121084</a> , <a href="#">NP_001245393</a> , <a href="#">NP_001245394</a> , <a href="#">NP_001595</a>
UniProt:	<a href="#">P26367</a>
Pathways:	<a href="#">Peptide Hormone Metabolism</a> , <a href="#">Carbohydrate Homeostasis</a>

## Application Details

Application Notes:	IF: 1:10~50. WB: 1:1000. IHC-P: 1:10~50. FC: 1:10~50
Restrictions:	For Research Use only

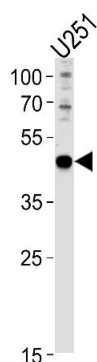
## Handling

Format:	Liquid
Buffer:	Purified polyclonal antibody supplied in PBS with 0.09 % (W/V) sodium azide.
Preservative:	Sodium azide
Precaution of Use:	This product contains Sodium azide: a POISONOUS AND HAZARDOUS SUBSTANCE which should be handled by trained staff only.
Storage:	4 °C,-20 °C
Storage Comment:	Maintain refrigerated at 2-8 °C for up to 6 months. For long term storage store at -20 °C in small aliquots to prevent freeze-thaw cycles.
Expiry Date:	6 months



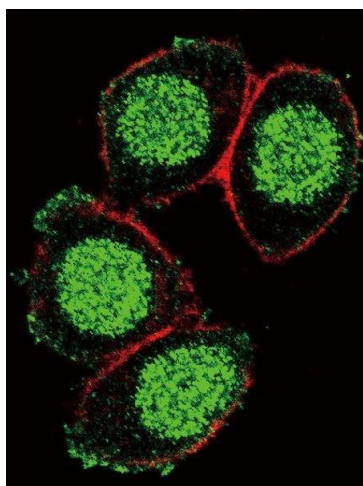
### Flow Cytometry

**Image 1.** Flow cytometric analysis of HeLa cells using X6 Antibody (Center) (bottom histogram) compared to a negative control cell (top histogram). FITC-conjugated goat-anti-rabbit secondary antibodies were used for the analysis.



### Western Blotting

**Image 2.** X6 Antibody (Center) (ABIN390916 and ABIN2841118) western blot analysis in cell line lysates (35 µg/lane). This demonstrates the X6 antibody detected the X6 protein (arrow).



### Immunofluorescence

**Image 3.** Confocal immunofluorescent analysis of X6 Antibody (Center) (ABIN390916 and ABIN2841118) with HeLa cells followed by Alexa Fluor 488-conjugated goat anti-rabbit IgG (green). Actin filaments have been labeled with Alexa Fluor 555 phalloidin (red).

Please check the [product details page](#) for more images. Overall 4 images are available for ABIN390916.