

Datasheet for ABIN390917

anti-Tryptophan Hydroxylase 1 antibody (N-Term)

4 Images

[Go to Product page](#)

Overview

Quantity:	400 µL
Target:	Tryptophan Hydroxylase 1 (TPH1)
Binding Specificity:	AA 35-62, N-Term
Reactivity:	Human
Host:	Rabbit
Clonality:	Polyclonal
Conjugate:	This Tryptophan Hydroxylase 1 antibody is un-conjugated
Application:	Western Blotting (WB), Immunofluorescence (IF), Immunohistochemistry (Paraffin-embedded Sections) (IHC (p)), Flow Cytometry (FACS)

Product Details

Immunogen:	This TPH1 antibody is generated from rabbits immunized with a KLH conjugated synthetic peptide between 35-62 amino acids from the N-terminal region of human TPH1.
Clone:	RB21510
Isotype:	Ig Fraction
Predicted Reactivity:	C, Rb, Rat, X
Purification:	This antibody is purified through a protein A column, followed by peptide affinity purification.

Target Details

Target:	Tryptophan Hydroxylase 1 (TPH1)
---------	---------------------------------

Target Details

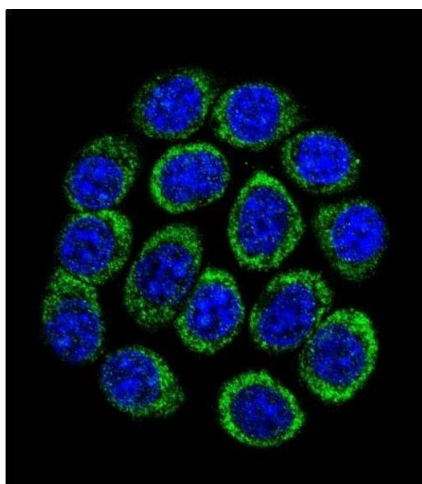
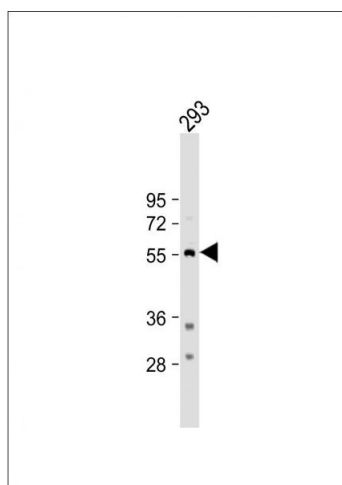
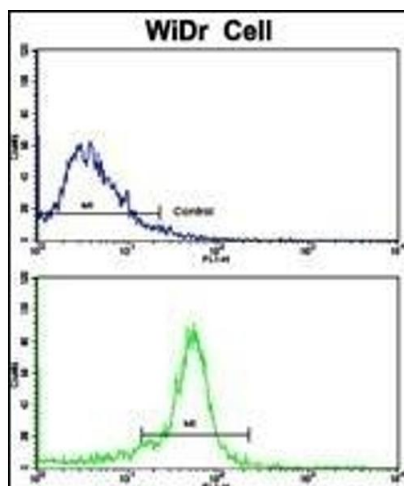
Alternative Name:	TPH1 (TPH1 Products)
Background:	TPH1 is a member of the aromatic amino acid hydroxylase family. This protein catalyzes the first and rate limiting step in the biosynthesis of serotonin, an important hormone and neurotransmitter.
Molecular Weight:	50985
Gene ID:	7166
NCBI Accession:	NP_004170
UniProt:	P17752
Pathways:	Feeding Behaviour

Application Details

Application Notes:	IF: 1:10~50. WB: 1:500. IHC-P: 1:50~100. FC: 1:10~50
Restrictions:	For Research Use only

Handling

Format:	Liquid
Buffer:	Purified polyclonal antibody supplied in PBS with 0.09 % (W/V) sodium azide.
Preservative:	Sodium azide
Precaution of Use:	This product contains Sodium azide: a POISONOUS AND HAZARDOUS SUBSTANCE which should be handled by trained staff only.
Storage:	4 °C,-20 °C
Storage Comment:	Maintain refrigerated at 2-8 °C for up to 6 months. For long term storage store at -20 °C in small aliquots to prevent freeze-thaw cycles.
Expiry Date:	6 months



Flow Cytometry

Image 1. Flow cytometric analysis of widr cells using TPH1 Antibody (N-term)(bottom histogram) compared to a negative control cell (top histogram). FITC-conjugated goat-anti-rabbit secondary antibodies were used for the analysis.

Western Blotting

Image 2. Anti-TPH1 Antibody (N-term) at 1:500 dilution + 293 whole cell lysate Lysates/proteins at 20 µg per lane. Secondary Goat Anti-Rabbit IgG, (H+L), Peroxidase conjugated at 1/10000 dilution. Predicted band size : 51 kDa Blocking/Dilution buffer: 5 % NFDm/TBST.

Immunofluorescence

Image 3. Confocal immunofluorescent analysis of TPH1 Antibody (N-term) (ABIN390917 and ABIN2841120) with 293 cell followed by Alexa Fluor 488-conjugated goat anti-rabbit IgG (green). DI was used to stain the cell nuclear (blue).

Please check the [product details page](#) for more images. Overall 4 images are available for ABIN390917.