



[Go to Product page](#)

Datasheet for ABIN390923

## anti-TMPRSS3 antibody (AA 272-300)

### 2 Images

#### Overview

Quantity:	400 µL
Target:	TMPRSS3
Binding Specificity:	AA 272-300
Reactivity:	Human
Host:	Rabbit
Clonality:	Polyclonal
Application:	Western Blotting (WB), Immunofluorescence (IF)

#### Product Details

Immunogen:	This TMPRSS3 antibody is generated from rabbits immunized with a KLH conjugated synthetic peptide between 272-300 amino acids from the Central region of human TMPRSS3.
Clone:	RB21838
Isotype:	Ig Fraction
Purification:	This antibody is purified through a protein A column, followed by peptide affinity purification.

#### Target Details

Target:	TMPRSS3
Alternative Name:	TMPRSS3 ( <a href="#">TMPRSS3 Products</a> )
Background:	TMPRSS3 belongs to the serine protease family. This protein contains a serine protease domain, a transmembrane domain, a LDL receptor-like domain, and a scavenger receptor cysteine-rich domain. Serine proteases are known to be involved in a variety of biological

## Target Details

---

processes, whose malfunction often leads to human diseases and disorders.

Molecular Weight: 49405

Gene ID: 64699

NCBI Accession: [NP\\_001243246](#), [NP\\_076927](#), [NP\\_115780](#), [NP\\_115781](#)

UniProt: [P57727](#)

Pathways: [Sensory Perception of Sound](#)

## Application Details

---

Application Notes: IF: 1:10~50. WB: 1:1000

Restrictions: For Research Use only

## Handling

---

Format: Liquid

Buffer: Purified polyclonal antibody supplied in PBS with 0.09 % (W/V) sodium azide.

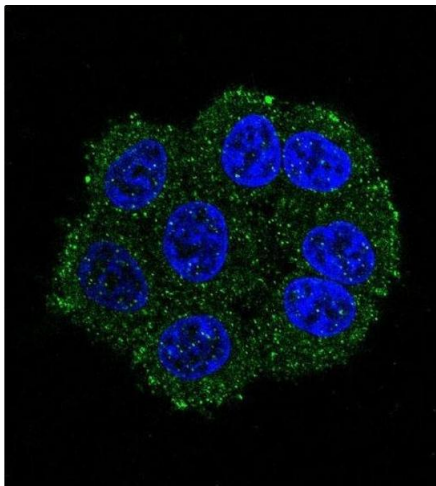
Preservative: Sodium azide

Precaution of Use: This product contains Sodium azide: a POISONOUS AND HAZARDOUS SUBSTANCE which should be handled by trained staff only.

Storage: 4 °C,-20 °C

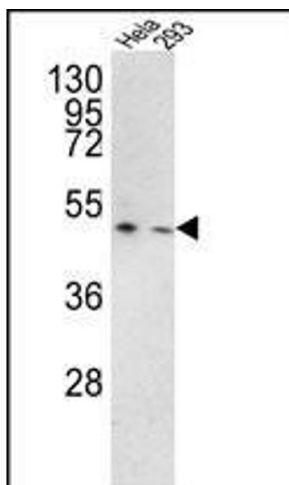
Storage Comment: Maintain refrigerated at 2-8 °C for up to 6 months. For long term storage store at -20 °C in small aliquots to prevent freeze-thaw cycles.

Expiry Date: 6 months



### Immunofluorescence

**Image 1.** Confocal immunofluorescent analysis of TRSS3 Antibody (Center) (ABIN390923 and ABIN2841125) with hela cell followed by Alexa Fluor 488-conjugated goat anti-rabbit IgG (green). DAPI was used to stain the cell nuclear (blue).



### Western Blotting

**Image 2.** Western blot analysis of TRSS3 Antibody (Center) (ABIN390923 and ABIN2841125) in HeLa, 293 cell line lysates (35 µg/lane). TRSS3 (arrow) was detected using the purified Pab.