

Datasheet for ABIN390924
anti-C6 antibody (N-Term)



[Go to Product page](#)

4 Images

1 Publication

Overview

Quantity:	400 µL
Target:	C6
Binding Specificity:	AA 30-58, N-Term
Reactivity:	Human
Host:	Rabbit
Clonality:	Polyclonal
Application:	Western Blotting (WB), Flow Cytometry (FACS), Immunofluorescence (IF), Immunohistochemistry (Paraffin-embedded Sections) (IHC (p))

Product Details

Immunogen:	This C6 antibody is generated from rabbits immunized with a KLH conjugated synthetic peptide between 30-58 AA from the N-terminal region of human C6.
Clone:	RB21849
Isotype:	Ig Fraction
Specificity:	This C6 antibody is generated from rabbits immunized with a KLH conjugated synthetic peptide between 37~66 amino acids from the N-terminal region of human C6.
Purification:	This antibody is purified through a protein A column, followed by peptide affinity purification.

Target Details

Target:	C6
Alternative Name:	C6 (C6 Products)

Target Details

Background: C6 is a component of complement cascade. It is part of the membrane attack complex which can insert into the cell membrane and cause cell to lyse. People with C6 deficiency are prone to bacterial infection.

Synonyms: Complement component C6, C6

Pathways: Complement and coagulation cascades, Prion diseases

Molecular Weight: 104786 Da

Gene ID: 729

UniProt: [P13671](#)

Application Details

Application Notes: WB = 1:1000, IHC (p) = 1:50-100, FACS = 1:10-50, IF = 1:10-50

Restrictions: For Research Use only

Handling

Format: Liquid

Concentration: 0.45 mg/mL

Buffer: PBS with 0.09 % (W/V) sodium azide

Preservative: Sodium azide

Precaution of Use: This product contains sodium azide: a POISONOUS AND HAZARDOUS SUBSTANCE which should be handled by trained staff only.

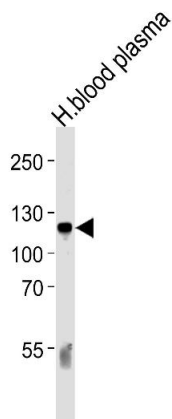
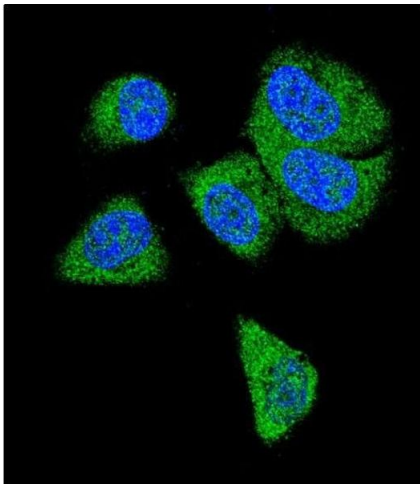
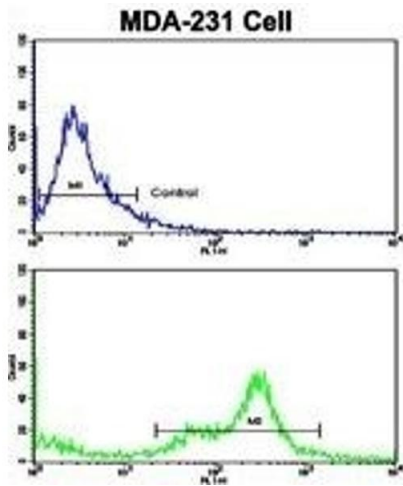
Storage: 4 °C/-20 °C

Storage Comment: Maintain refrigerated at 2-8 °C for up to 6 months. For long term storage store at -20 °C in small aliquots to prevent freeze-thaw cycles.

Expiry Date: 6 months

Publications

Product cited in: Sadeghi, Ullenhag, Wagenius, Tötterman, Eriksson: "Rapid expansion of T cells: Effects of culture and cryopreservation and importance of short-term cell recovery." in: **Acta oncologica (Stockholm, Sweden)**, Vol. 52, Issue 5, pp. 978-86, (2013) ([PubMed](#)).



Flow Cytometry

Image 1. Flow cytometric analysis of MDA-231 cells using C6 Antibody (N-term)(bottom histogram) compared to a negative control (top histogram). FITC-conjugated goat-anti-rabbit secondary antibodies were used for the analysis.

Immunofluorescence

Image 2. Confocal immunofluorescent analysis of C6 Antibody (N-term) (ABIN390924 and ABIN2841126) with MDA-M cell followed by Alexa Fluor® 488-conjugated goat anti-rabbit IgG (green). DAPI was used to stain the cell nuclear (blue).

Western Blotting

Image 3. Western blot analysis of lysate from human blood plasma tissue lysate, using C6 Antibody (N-term) (ABIN390924 and ABIN2841126). (ABIN390924 and ABIN2841126) was diluted at 1:1000 at each lane. A goat anti-rabbit IgG H&L(HRP) at 1:5000 dilution was used as the secondary antibody. Lysate at 35 µg per lane.

Please check the [product details page](#) for more images. Overall 4 images are available for ABIN390924.