

Datasheet for ABIN390935
anti-PI4KB antibody (AA 519-548)

3 Images

[Go to Product page](#)

Overview

Quantity:	400 µL
Target:	PI4KB
Binding Specificity:	AA 519-548
Reactivity:	Human
Host:	Rabbit
Clonality:	Polyclonal
Conjugate:	This PI4KB antibody is un-conjugated
Application:	Western Blotting (WB), Immunohistochemistry (Paraffin-embedded Sections) (IHC (p)), Flow Cytometry (FACS)

Product Details

Immunogen:	This PIK4CB antibody is generated from rabbits immunized with a KLH conjugated synthetic peptide between 519-548 amino acids from the Central region of human PIK4CB.
Clone:	RB18563
Isotype:	Ig Fraction
Predicted Reactivity:	B, Zf, M, Rat
Purification:	This antibody is prepared by Saturated Ammonium Sulfate (SAS) precipitation followed by dialysis against PBS.

Target Details

Target:	PI4KB
---------	-------

Target Details

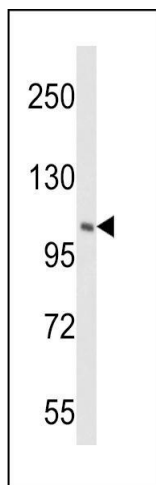
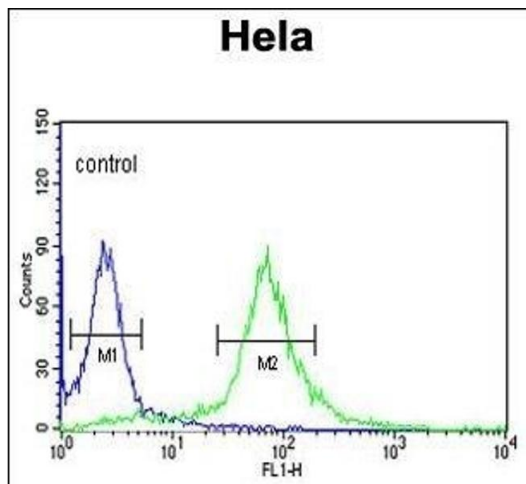
Alternative Name:	PIK4CB (PI4KB Products)
Background:	PIK4CB phosphorylates phosphatidylinositol (PI) in the first committed step in the production of the second messenger inositol-1,4,5,-trisphosphate (PIP). It may regulate Golgi disintegration/reorganization during mitosis, possibly via its phosphorylation.
Molecular Weight:	91379
Gene ID:	5298
NCBI Accession:	NP_001185702 , NP_001185703 , NP_001185704 , NP_002642
UniProt:	Q9UBF8
Pathways:	Inositol Metabolic Process

Application Details

Application Notes:	WB: 1:1000. IHC-P: 1:50~100. FC: 1:10~50
Restrictions:	For Research Use only

Handling

Format:	Liquid
Buffer:	Purified polyclonal antibody supplied in PBS with 0.09 % (W/V) sodium azide.
Preservative:	Sodium azide
Precaution of Use:	This product contains Sodium azide: a POISONOUS AND HAZARDOUS SUBSTANCE which should be handled by trained staff only.
Storage:	4 °C,-20 °C
Storage Comment:	Maintain refrigerated at 2-8 °C for up to 6 months. For long term storage store at -20 °C in small aliquots to prevent freeze-thaw cycles.
Expiry Date:	6 months



Flow Cytometry

Image 1. PIK4CB Antibody (Center) (ABIN390935 and ABIN2841135) flow cytometric analysis of Hela cells (right histogram) compared to a negative control cell (left histogram). FITC-conjugated goat-anti-rabbit secondary antibodies were used for the analysis.

Western Blotting

Image 2. Western blot analysis of PIK4CB Antibody (Center) (ABIN390935 and ABIN2841135) in Hela cell line lysates (35 µg/lane). PIK4CB (arrow) was detected using the purified Pab.

Immunohistochemistry (Paraffin-embedded Sections)

Image 3. Formalin-fixed and paraffin-embedded human skeletal muscle reacted with PIK4CB Antibody (Center), which was peroxidase-conjugated to the secondary antibody, followed by DAB staining. This data demonstrates the use of this antibody for immunohistochemistry, clinical relevance has not been evaluated.