

Datasheet for ABIN390938  
**anti-CER1 antibody (N-Term)**

## 2 Images

[Go to Product page](#)

## Overview

Quantity:	400 µL
Target:	CER1
Binding Specificity:	AA 56-85, N-Term
Reactivity:	Human
Host:	Rabbit
Clonality:	Polyclonal
Conjugate:	This CER1 antibody is un-conjugated
Application:	Western Blotting (WB), Immunohistochemistry (Paraffin-embedded Sections) (IHC (p))

## Product Details

Immunogen:	This CER1 antibody is generated from rabbits immunized with a KLH conjugated synthetic peptide between 56-85 amino acids from the N-terminal region of human CER1.
Clone:	RB19783
Isotype:	Ig Fraction
Purification:	This antibody is prepared by Saturated Ammonium Sulfate (SAS) precipitation followed by dialysis against PBS.

## Target Details

Target:	CER1
Alternative Name:	CER1 ( <a href="#">CER1 Products</a> )

## Target Details

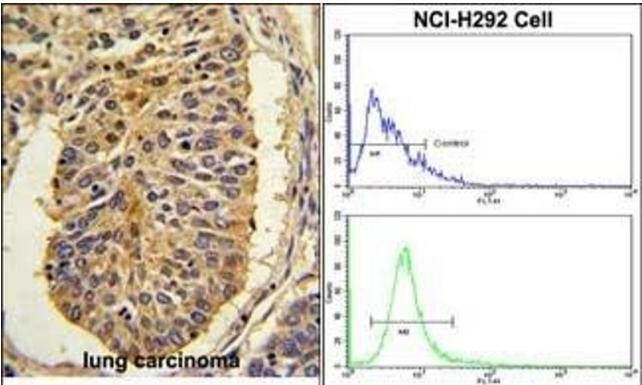
Background:	CER1 is a cytokine member of the cysteine knot superfamily, characterized by nine conserved cysteines and a cysteine knot region. The cerberus-related cytokines, together with Dan and DRM/Gremlin, represent a group of bone morphogenetic protein (BMP) antagonists that can bind directly to BMPs and inhibit their activity.
Molecular Weight:	30084
Gene ID:	9350
NCBI Accession:	<a href="#">NP_005445</a>
UniProt:	<a href="#">O95813</a>
Pathways:	<a href="#">Maintenance of Protein Location</a>

## Application Details

Application Notes:	WB: 1:1000. IHC-P: 1:50~100
Restrictions:	For Research Use only

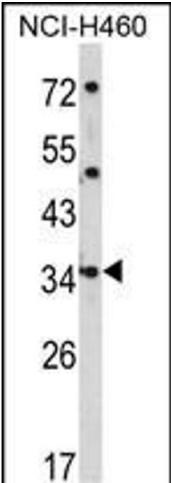
## Handling

Format:	Liquid
Buffer:	Purified polyclonal antibody supplied in PBS with 0.09 % (W/V) sodium azide.
Preservative:	Sodium azide
Precaution of Use:	This product contains Sodium azide: a POISONOUS AND HAZARDOUS SUBSTANCE which should be handled by trained staff only.
Storage:	4 °C,-20 °C
Storage Comment:	Maintain refrigerated at 2-8 °C for up to 6 months. For long term storage store at -20 °C in small aliquots to prevent freeze-thaw cycles.
Expiry Date:	6 months



Immunohistochemistry (Paraffin-embedded Sections)

**Image 1.** (LEFT) Formalin-fixed and paraffin-embedded human lung carcinoma with CER1 Antibody (N-term), which was peroxidase-conjugated to the secondary antibody, followed by DAB staining. This data demonstrates the use of this antibody for immunohistochemistry, clinical relevance has not been evaluated. (RIGHT) Flow cytometric analysis of NCI- cells using 0.025 mg/mL of CER1 Antibody (N-term) (bottom histogram) compared to a negative control cell (top histogram). FITC-conjugated goat-anti-rabbit secondary antibodies were used for the analysis.



Western Blotting

**Image 2.** Western blot analysis of CER1 Antibody (N-term) (ABIN390938 and ABIN2841136) in NCI- cell line lysates (35 µg/lane). CER1 (arrow) was detected using the purified Pab.