



[Go to Product page](#)

Datasheet for ABIN390945  
**anti-RGP1 antibody (C-Term)**

3 Images

Overview

Quantity:	400 µL
Target:	RGP1
Binding Specificity:	AA 243-271, C-Term
Reactivity:	Human, Mouse
Host:	Rabbit
Clonality:	Polyclonal
Conjugate:	This RGP1 antibody is un-conjugated
Application:	Western Blotting (WB), Immunohistochemistry (Paraffin-embedded Sections) (IHC (p)), Flow Cytometry (FACS)

Product Details

Immunogen:	This RGP1 antibody is generated from rabbits immunized with a KLH conjugated synthetic peptide between 243-271 amino acids from the C-terminal region of human RGP1.
Clone:	RB20236
Isotype:	Ig Fraction
Predicted Reactivity:	B
Purification:	This antibody is prepared by Saturated Ammonium Sulfate (SAS) precipitation followed by dialysis against PBS.

Target Details

Target:	RGP1
---------	------

## Target Details

---

Alternative Name:	<a href="#">RGP1 (RGP1 Products)</a>
Background:	Retrograde golgi transport homolog 1 (RGP1) is the mammalian homolog to the yeast RGP1, and is thought to be a potential Golgi recycling factor. The protein forms a tight complex with RIC1 and this complex binds Ypt6p and stimulates guanine nucleotide exchange. RGP1 yeast mutants exhibit defects in retrograde trafficking that are similar to those seen in yeast, with mutations in other retrograde Golgi transport proteins. It is expected that RGP1 plays a similar role in mammalian cells.
Molecular Weight:	42455
Gene ID:	9827
NCBI Accession:	<a href="#">NP_001073965</a>
UniProt:	<a href="#">Q92546</a>

## Application Details

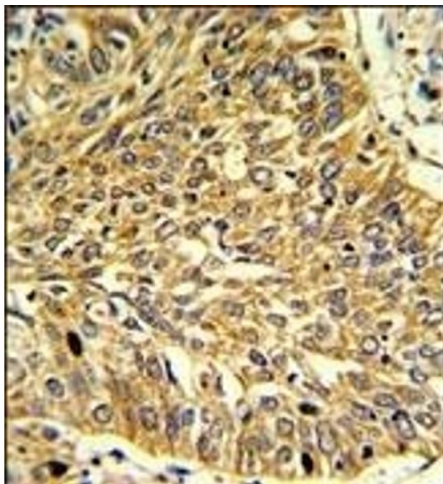
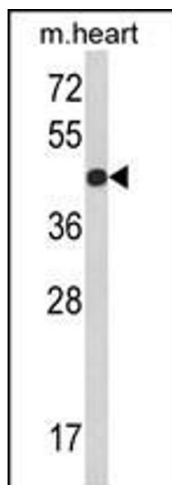
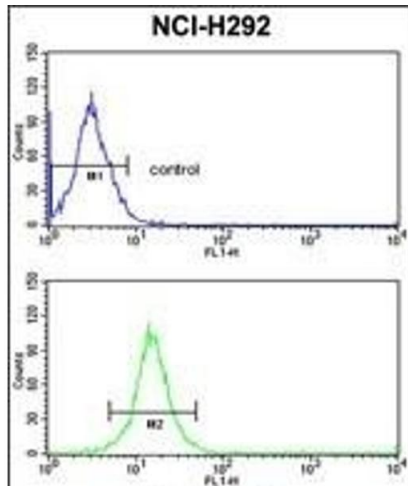
---

Application Notes:	WB: 1:1000. IHC-P: 1:50~100. FC: 1:10~50
Restrictions:	For Research Use only

## Handling

---

Format:	Liquid
Buffer:	Purified polyclonal antibody supplied in PBS with 0.09 % (W/V) sodium azide.
Preservative:	Sodium azide
Precaution of Use:	This product contains Sodium azide: a POISONOUS AND HAZARDOUS SUBSTANCE which should be handled by trained staff only.
Storage:	4 °C,-20 °C
Storage Comment:	Maintain refrigerated at 2-8 °C for up to 6 months. For long term storage store at -20 °C in small aliquots to prevent freeze-thaw cycles.
Expiry Date:	6 months



### Flow Cytometry

**Image 1.** RGP1 Antibody (C-term) (ABIN390945 and ABIN2841138) flow cytometric analysis of NCI- cells (bottom histogram) compared to a negative control cell (top histogram). FITC-conjugated goat-anti-rabbit secondary antibodies were used for the analysis.

### Western Blotting

**Image 2.** Western blot analysis of RGP1 Antibody (C-term) (ABIN390945 and ABIN2841138) in mouse heart tissue lysates (35 µg/lane). RGP1 (arrow) was detected using the purified Pab.

### Immunohistochemistry (Paraffin-embedded Sections)

**Image 3.** Formalin-fixed and paraffin-embedded human lung carcinoma reacted with RGP1 Antibody (C-term), which was peroxidase-conjugated to the secondary antibody, followed by DAB staining. This data demonstrates the use of this antibody for immunohistochemistry, clinical relevance has not been evaluated.