

Datasheet for ABIN390947
anti-CBS antibody (AA 301-330)



[Go to Product page](#)

6 Images

Overview

Quantity:	400 µL
Target:	CBS
Binding Specificity:	AA 301-330
Reactivity:	Human, Mouse, Rat
Host:	Rabbit
Clonality:	Polyclonal
Conjugate:	This CBS antibody is un-conjugated
Application:	Western Blotting (WB), Immunofluorescence (IF), Immunohistochemistry (Paraffin-embedded Sections) (IHC (p)), Flow Cytometry (FACS)

Product Details

Immunogen:	This CBS antibody is generated from rabbits immunized with a KLH conjugated synthetic peptide between 301-330 amino acids from the Central region of human CBS.
Clone:	RB21183
Isotype:	Ig Fraction
Predicted Reactivity:	Pr
Purification:	This antibody is purified through a protein A column, followed by peptide affinity purification.

Target Details

Target:	CBS
---------	-----

Target Details

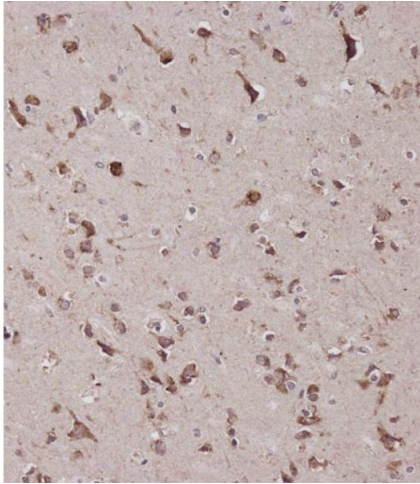
Alternative Name:	CBS (CBS Products)
Background:	CBS acts as a homotetramer to catalyze the conversion of homocysteine to cystathionine, the first step in the transsulfuration pathway. This protein is allosterically activated by adenosyl-methionine and uses pyridoxal phosphate as a cofactor. Defects in this gene can cause cystathionine beta-synthase deficiency (CBSB), which can lead to homocystinuria.
Molecular Weight:	60587
Gene ID:	875
NCBI Accession:	NP_000062 , NP_001171479 , NP_001171480
UniProt:	P35520

Application Details

Application Notes:	WB: 1:500. IF: 1:25. WB: 1:2000. IHC-P-Leica: 1:500. IHC-P-Leica: 1:500. FC: 1:25
Restrictions:	For Research Use only

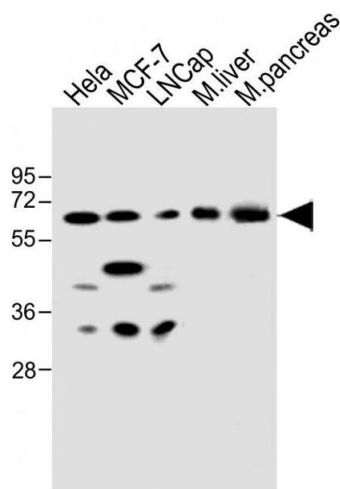
Handling

Format:	Liquid
Buffer:	Purified polyclonal antibody supplied in PBS with 0.09 % (W/V) sodium azide.
Preservative:	Sodium azide
Precaution of Use:	This product contains Sodium azide: a POISONOUS AND HAZARDOUS SUBSTANCE which should be handled by trained staff only.
Storage:	4 °C,-20 °C
Storage Comment:	Maintain refrigerated at 2-8 °C for up to 6 months. For long term storage store at -20 °C in small aliquots to prevent freeze-thaw cycles.
Expiry Date:	6 months



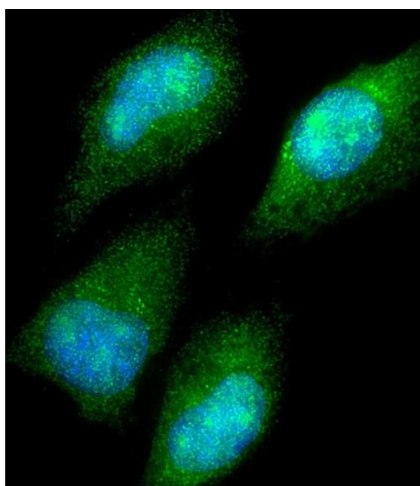
Immunohistochemistry (Paraffin-embedded Sections)

Image 1. Immunohistochemical analysis of C on paraffin-embedded Human brain tissue was performed on the Leica®BOND RXm. Tissue was fixed with formaldehyde at room temperature. Heat induced epitope retrieval was performed by EDTA buffer (pH 9.0). Samples were incubated with primary Antibody (1:500) for 15 min at room temperature. Leica Bond Polymer Refine Detection was used as the secondary antibody.



Western Blotting

Image 2. All lanes : Anti-CBS Antibody (Center) at 1:500 dilution Lane 1: HeLa whole cell lysate Lane 2: MCF-7 whole cell lysate Lane 3: LNCap whole cell lysate Lane 4: mouse liver lysate Lane 5: mouse pancreas lysate Lysates/proteins at 20 µg per lane. Secondary Goat Anti-Rabbit IgG, (H+L), Peroxidase conjugated at 1/10000 dilution. Predicted band size : 61 kDa Blocking/Dilution buffer: 5 % NFDm/TBST.



Immunofluorescence

Image 3. Immunofluorescent analysis of 4 % paraformaldehyde-fixed, 0.1 % Triton X-100 permeabilized HeLa (human cervical epithelial adenocarcinoma cell line) cells labeling CBS with (ABIN390947 and ABIN2841141) at 1/25 dilution, followed by Dylight® 488-conjugated goat anti-rabbit IgG (NK179883) secondary antibody at 1/200 dilution (green). Immunofluorescence image showing cytoplasm and nucleus staining on HeLa cell line. The nuclear counter stain is DAPI (blue).

Please check the [product details page](#) for more images. Overall 6 images are available for ABIN390947.