

Datasheet for ABIN390953
anti-CD21 antibody (C-Term)[Go to Product page](#)

3 Images

Overview

Quantity:	400 µL
Target:	CD21 (CR2)
Binding Specificity:	AA 986-1014, C-Term
Reactivity:	Human
Host:	Rabbit
Clonality:	Polyclonal
Conjugate:	This CD21 antibody is un-conjugated
Application:	Flow Cytometry (FACS), Western Blotting (WB), Immunohistochemistry (Paraffin-embedded Sections) (IHC (p))

Product Details

Immunogen:	This CR2 antibody is generated from rabbits immunized with a KLH conjugated synthetic peptide between 986-1014 amino acids from the C-terminal region of human CR2.
Clone:	RB21402
Isotype:	IgG
Purification:	This antibody is purified through a protein A column, followed by peptide affinity purification.

Target Details

Target:	CD21 (CR2)
Alternative Name:	CR2 (CR2 Products)

Target Details

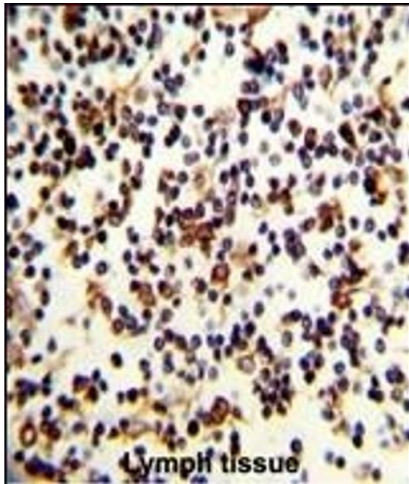
Background:	CR2 is a membrane protein, which functions as a receptor for Epstein-Barr virus (EBV) binding on B and T lymphocytes.
Molecular Weight:	112916
Gene ID:	1380
NCBI Accession:	NP_001006659 , NP_001868
UniProt:	P20023
Pathways:	Complement System

Application Details

Application Notes:	WB: 1:1000. IHC-P: 1:50~100. FC: 1:10~50
Restrictions:	For Research Use only

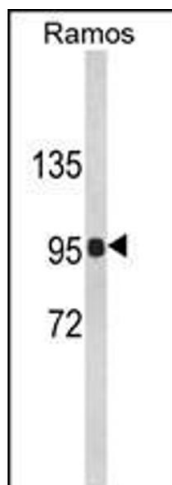
Handling

Format:	Liquid
Buffer:	Purified polyclonal antibody supplied in PBS with 0.09 % (W/V) sodium azide.
Preservative:	Sodium azide
Precaution of Use:	This product contains Sodium azide: a POISONOUS AND HAZARDOUS SUBSTANCE which should be handled by trained staff only.
Storage:	4 °C, -20 °C
Storage Comment:	Maintain refrigerated at 2-8 °C for up to 6 months. For long term storage store at -20 °C in small aliquots to prevent freeze-thaw cycles.
Expiry Date:	6 months



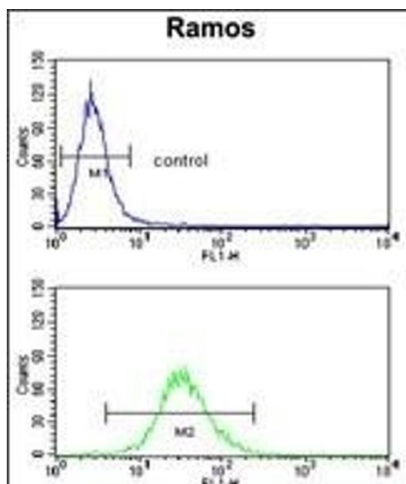
Immunohistochemistry (Paraffin-embedded Sections)

Image 1. Formalin-fixed and paraffin-embedded human Lymph reacted with CR2 Antibody (C-term), which was peroxidase-conjugated to the secondary antibody, followed by DAB staining. This data demonstrates the use of this antibody for immunohistochemistry, clinical relevance has not been evaluated.



Western Blotting

Image 2. Western blot analysis of CR2 Antibody (C-term) (ABIN390953 and ABIN2841143) in Ramos cell line lysates (35 µg/lane). CR2 (arrow) was detected using the purified Pab.



Flow Cytometry

Image 3. CR2 Antibody (C-term) (ABIN390953 and ABIN2841143) flow cytometry analysis of Ramos cells (bottom histogram) compared to a negative control cell (top histogram). FITC-conjugated goat-anti-rabbit secondary antibodies were used for the analysis.