

Datasheet for ABIN390968  
**anti-MSRB2 antibody (AA 44-73)**[Go to Product page](#)

## 3 Images

## Overview

Quantity:	400 µL
Target:	MSRB2
Binding Specificity:	AA 44-73
Reactivity:	Human
Host:	Rabbit
Clonality:	Polyclonal
Application:	Western Blotting (WB), Flow Cytometry (FACS), Immunohistochemistry (Paraffin-embedded Sections) (IHC (p))

## Product Details

Immunogen:	This MSRB2 antibody is generated from rabbits immunized with a KLH conjugated synthetic peptide between 44-73 amino acids from the Central region of human MSRB2.
Clone:	RB21711
Isotype:	Ig Fraction
Purification:	This antibody is purified through a protein A column, followed by peptide affinity purification.

## Target Details

Target:	MSRB2
Alternative Name:	MSRB2 ( <a href="#">MSRB2 Products</a> )
Background:	MSRB2 catalyzes the reduction of free and protein-bound methionine sulfoxide to methionine.

## Target Details

Molecular Weight:	19536
Gene ID:	22921
NCBI Accession:	<a href="#">NP_036360</a>
UniProt:	<a href="#">Q9Y3D2</a>

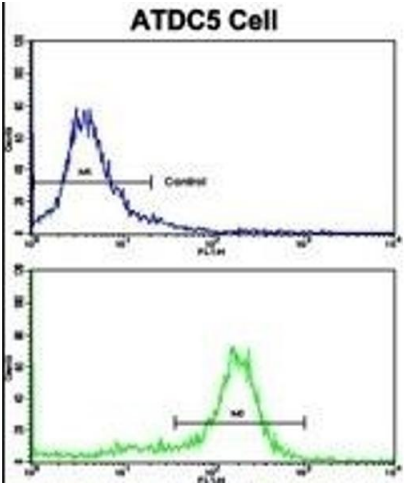
## Application Details

Application Notes:	WB: 1:1000. IHC-P: 1:50~100. FC: 1:10~50
Restrictions:	For Research Use only

## Handling

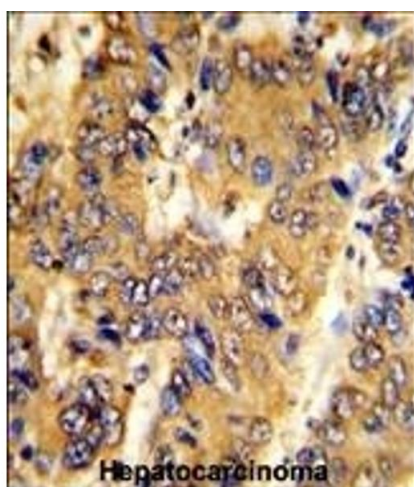
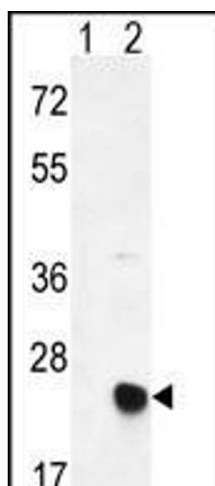
Format:	Liquid
Buffer:	Purified polyclonal antibody supplied in PBS with 0.09 % (W/V) sodium azide.
Preservative:	Sodium azide
Precaution of Use:	This product contains Sodium azide: a POISONOUS AND HAZARDOUS SUBSTANCE which should be handled by trained staff only.
Storage:	4 °C,-20 °C
Storage Comment:	Maintain refrigerated at 2-8 °C for up to 6 months. For long term storage store at -20 °C in small aliquots to prevent freeze-thaw cycles.
Expiry Date:	6 months

## Images



### Flow Cytometry

**Image 1.** Flow cytometric analysis of ATDC5 cells using MSRB2 Antibody (Center)(bottom histogram) compared to a negative control cell (top histogram). FITC-conjugated goat-anti-rabbit secondary antibodies were used for the analysis.



### Western Blotting

**Image 2.** Western blot analysis of MSRB2 (arrow) using rabbit polyclonal MSRB2 Antibody (Center) (ABIN390968 and ABIN2841148). 293 cell lysates (2 µg/lane) either nontransfected (Lane 1) or transiently transfected (Lane 2) with the MSRB2 gene.

### Immunohistochemistry (Paraffin-embedded Sections)

**Image 3.** Formalin-fixed and paraffin-embedded human hepatocarcinoma with MSRB2 Antibody (Center), which was peroxidase-conjugated to the secondary antibody, followed by DAB staining. This data demonstrates the use of this antibody for immunohistochemistry, clinical relevance has not been evaluated.