

Datasheet for ABIN390969  
**anti-LIF antibody (AA 72-101)**[Go to Product page](#)

## 4 Images

## Overview

Quantity:	400 µL
Target:	LIF
Binding Specificity:	AA 72-101
Reactivity:	Human, Rat
Host:	Rabbit
Clonality:	Polyclonal
Conjugate:	This LIF antibody is un-conjugated
Application:	Western Blotting (WB), Flow Cytometry (FACS), Immunohistochemistry (Paraffin-embedded Sections) (IHC (p))

## Product Details

Immunogen:	This LIF antibody is generated from rabbits immunized with a KLH conjugated synthetic peptide between 72-101 amino acids from the Central region of human LIF.
Clone:	RB21725
Isotype:	Ig Fraction
Purification:	This antibody is purified through a protein A column, followed by peptide affinity purification.

## Target Details

Target:	LIF
Alternative Name:	LIF ( <a href="#">LIF Products</a> )

## Target Details

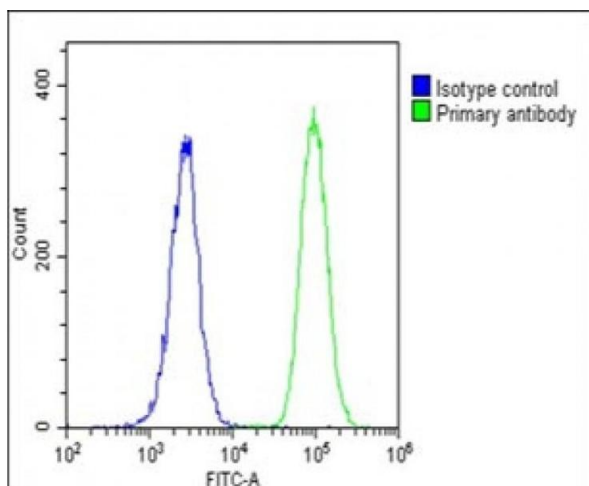
Background:	LIF is a pleiotropic cytokine with roles in several different systems. It is involved in the induction of hematopoietic differentiation in normal and myeloid leukemia cells, induction of neuronal cell differentiation, regulator of mesenchymal to epithelial conversion during kidney development, and may also have a role in immune tolerance at the maternal-fetal interface.
Molecular Weight:	22008
Gene ID:	3976
NCBI Accession:	<a href="#">NP_001244064</a> , <a href="#">NP_002300</a>
UniProt:	<a href="#">P15018</a>
Pathways:	<a href="#">JAK-STAT Signaling</a> , <a href="#">Positive Regulation of Peptide Hormone Secretion</a> , <a href="#">Negative Regulation of Hormone Secretion</a> , <a href="#">Stem Cell Maintenance</a> , <a href="#">Growth Factor Binding</a>

## Application Details

Application Notes:	WB: 1:1000. WB: 1:1000. IHC-P-Leica: 1:500. FC: 1:25
Restrictions:	For Research Use only

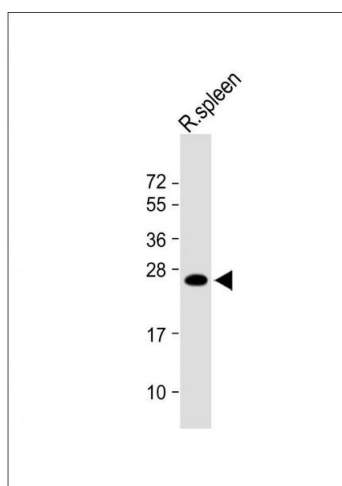
## Handling

Format:	Liquid
Buffer:	Purified polyclonal antibody supplied in PBS with 0.09 % (W/V) sodium azide.
Preservative:	Sodium azide
Precaution of Use:	This product contains Sodium azide: a POISONOUS AND HAZARDOUS SUBSTANCE which should be handled by trained staff only.
Handling Advice:	Avoid freeze-thaw cycles.
Storage:	4 °C,-20 °C
Storage Comment:	Maintain refrigerated at 2-8 °C for up to 6 months. For long term storage store at -20 °C in small aliquots.
Expiry Date:	6 months



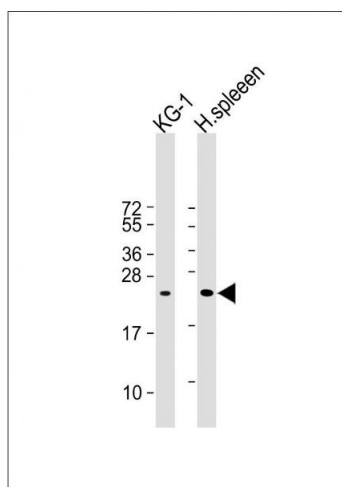
### Flow Cytometry

**Image 1.** Overlay histogram showing U-2 OS cells stained with C (green line). The cells were fixed with 2 % paraformaldehyde (10 min) and then permeabilized with 90 % methanol for 10 min. The cells were then incubated in 2 % bovine serum albumin to block non-specific protein-protein interactions followed by the antibody (C, 1:25 dilution) for 60 min at 37 °C. The secondary antibody used was Goat-Anti-Rabbit IgG, DyLight® 488 Conjugated Highly Cross-Adsorbed(1583138) at 1/200 dilution for 40 min at 37 °C. Isotype control antibody (blue line) was rabbit IgG1 (1 µg/1x10<sup>6</sup> cells) used under the same conditions. Acquisition of >10,000 events was performed.



### Western Blotting

**Image 2.** Anti-LIF Antibody (Center) at 1:1000 dilution + Rat spleen lysate Lysates/proteins at 20 µg per lane. Secondary Goat Anti-Rabbit IgG, (H+L), Peroxidase conjugated at 1/10000 dilution. Predicted band size : 25 kDa Blocking/Dilution buffer: 5 % NFDm/TBST.



### Western Blotting

**Image 3.** All lanes : Anti- LIF Antibody (Center) at 1:1000 dilution Lane 1: KG-1 whole cell lysate Lane 2: Human spleen whole cell lysate Lysates/proteins at 20 µg per lane. Secondary Goat Anti-Rabbit IgG, (H+L), Peroxidase conjugated at 1/10000 dilution. Predicted band size : 22 kDa Blocking/Dilution buffer: 5 % NFDm/TBST.

Please check the [product details page](#) for more images. Overall 4 images are available for ABIN390969.