



[Go to Product page](#)

Datasheet for ABIN390973  
**anti-HMHA1 antibody (AA 877-903)**

3 Images

### Overview

Quantity:	400 µL
Target:	HMHA1
Binding Specificity:	AA 877-903
Reactivity:	Human
Host:	Rabbit
Clonality:	Polyclonal
Conjugate:	This HMHA1 antibody is un-conjugated
Application:	Western Blotting (WB), Flow Cytometry (FACS), Immunohistochemistry (Paraffin-embedded Sections) (IHC (p))

### Product Details

Immunogen:	This HMHA1 antibody is generated from rabbits immunized with a KLH conjugated synthetic peptide between 877-903 amino acids from the Central region of human HMHA1.
Clone:	RB21759
Isotype:	Ig Fraction
Purification:	This antibody is purified through a protein A column, followed by peptide affinity purification.

### Target Details

Target:	HMHA1
Alternative Name:	HMHA1 ( <a href="#">HMHA1 Products</a> )

## Target Details

---

Background:	The minor histocompatibility antigen (mHags), HA-1 is a immunogenic alloantigen shown to be responsible for graft-versus-host disease (GVHD) in HLA-identical bone marrow transplantation. The antigen has two known alleles resulting in a single amino acid polymorphism. The HA-1H allele encodes histidine, whereas the HA-1R allele encodes arginine.
Molecular Weight:	124614
Gene ID:	23526
NCBI Accession:	<a href="#">NP_001245257</a> , <a href="#">NP_001269263</a> , <a href="#">NP_001269264</a> , <a href="#">NP_036424</a>
UniProt:	<a href="#">Q92619</a>

## Application Details

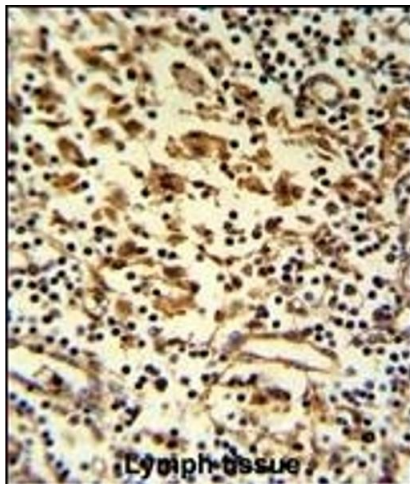
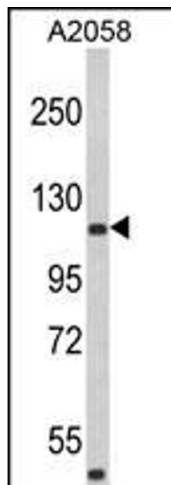
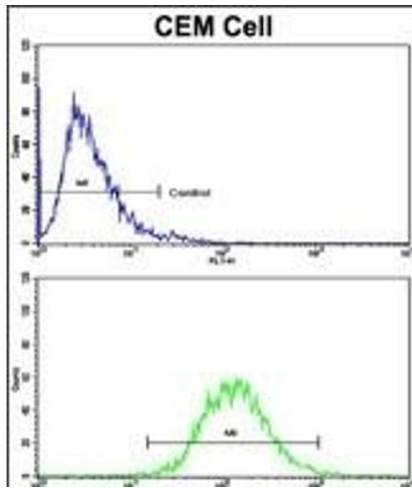
---

Application Notes:	WB: 1:1000. IHC-P: 1:50~100. FC: 1:10~50
Restrictions:	For Research Use only

## Handling

---

Format:	Liquid
Buffer:	Purified polyclonal antibody supplied in PBS with 0.09 % (W/V) sodium azide.
Preservative:	Sodium azide
Precaution of Use:	This product contains Sodium azide: a POISONOUS AND HAZARDOUS SUBSTANCE which should be handled by trained staff only.
Storage:	4 °C,-20 °C
Storage Comment:	Maintain refrigerated at 2-8 °C for up to 6 months. For long term storage store at -20 °C in small aliquots to prevent freeze-thaw cycles.
Expiry Date:	6 months



### Flow Cytometry

**Image 1.** Flow cytometric analysis of CEM cells using HMHA1 Antibody (Center)(bottom histogram) compared to a negative control cell (top histogram). FITC-conjugated goat-anti-rabbit secondary antibodies were used for the analysis.

### Western Blotting

**Image 2.** Western blot analysis of HMHA1 Antibody (Center) (ABIN390973 and ABIN2841152) in cell line lysates (35  $\mu$ g/lane). HMHA1 (arrow) was detected using the purified Pab.

### Immunohistochemistry (Paraffin-embedded Sections)

**Image 3.** Formalin-fixed and paraffin-embedded human lymph reacted with HMHA1 Antibody (Center), which was peroxidase-conjugated to the secondary antibody, followed by DAB staining. This data demonstrates the use of this antibody for immunohistochemistry, clinical relevance has not been evaluated.