



[Go to Product page](#)

Datasheet for ABIN390991
anti-RIOK2 antibody (AA 270-299)

1 Image

Overview

Quantity:	400 µL
Target:	RIOK2
Binding Specificity:	AA 270-299
Reactivity:	Human
Host:	Rabbit
Clonality:	Polyclonal
Conjugate:	This RIOK2 antibody is un-conjugated
Application:	Western Blotting (WB)

Product Details

Immunogen:	This RIOK2 antibody is generated from rabbits immunized with a KLH conjugated synthetic peptide between 270-299 amino acids from the Central region of human RIOK2.
Clone:	RB9802
Isotype:	Ig Fraction
Purification:	This antibody is prepared by Saturated Ammonium Sulfate (SAS) precipitation followed by dialysis against PBS.

Target Details

Target:	RIOK2
Alternative Name:	RIOK2 (RIOK2 Products)

Target Details

Background: RIOK2 belongs to the protein kinase superfamily, RIO-type Ser/Thr kinase family. Serine/threonine protein kinases, such as RIOK2, phosphorylate the OH group of serine or threonine (which have similar sidechains). Activity of these protein kinases can be regulated by specific events (e.g. DNA damage), as well as numerous chemical signals, including cAMP/cGMP, Diacylglycerol, and Ca²⁺/calmodulin.

Molecular Weight: 63283

Gene ID: 55781

NCBI Accession: [NP_001153221](#), [NP_060813](#)

UniProt: [Q9BVS4](#)

Application Details

Application Notes: WB: 1:1000

Restrictions: For Research Use only

Handling

Format: Liquid

Buffer: Purified polyclonal antibody supplied in PBS with 0.09 % (W/V) sodium azide.

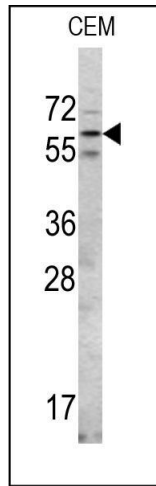
Preservative: Sodium azide

Precaution of Use: This product contains Sodium azide: a POISONOUS AND HAZARDOUS SUBSTANCE which should be handled by trained staff only.

Storage: 4 °C, -20 °C

Storage Comment: Maintain refrigerated at 2-8 °C for up to 6 months. For long term storage store at -20 °C in small aliquots to prevent freeze-thaw cycles.

Expiry Date: 6 months



Western Blotting

Image 1. Western blot analysis of RIOK2 Center (ABIN390991 and ABIN2841174) in CEM cell line lysates (35 µg/lane). RIOK2 (arrow) was detected using the purified Pab.