

Datasheet for ABIN391001

anti-PKC alpha antibody (C-Term)

4 Images

1 Publication

[Go to Product page](#)

Overview

Quantity:	400 µL
Target:	PKC alpha (PKCa)
Binding Specificity:	AA 299-329, C-Term
Reactivity:	Human
Host:	Rabbit
Clonality:	Polyclonal
Conjugate:	This PKC alpha antibody is un-conjugated
Application:	Western Blotting (WB), Immunohistochemistry (Paraffin-embedded Sections) (IHC (p)), Flow Cytometry (FACS), Immunofluorescence (IF)

Product Details

Immunogen:	This PKC alpha antibody is generated from rabbits immunized with a KLH conjugated synthetic peptide between 299-329 amino acids from the C-terminal region of human PKC alpha.
Clone:	RB01012
Isotype:	Ig Fraction
Predicted Reactivity:	M, Rb, Rat
Purification:	This antibody is prepared by Saturated Ammonium Sulfate (SAS) precipitation followed by dialysis against PBS.

Target Details

Target:	PKC alpha (PKCa)
---------	------------------

Target Details

Alternative Name:	PKC alpha (PKCa Products)
Background:	Protein kinase C (PKC) is a family of serine- and threonine-specific protein kinases that can be activated by calcium and the second messenger diacylglycerol. PKC family members phosphorylate a wide variety of protein targets and are known to be involved in diverse cellular signaling pathways. PKC family members also serve as major receptors for phorbol esters, a class of tumor promoters. Each member of the PKC family has a specific expression profile and is believed to play a distinct role in cells. PKC alpha is one of the PKC family members. This kinase has been reported to play roles in many different cellular processes, such as cell adhesion, cell transformation, cell cycle checkpoint, and cell volume control. Knockout studies in mice suggest that this kinase may be a fundamental regulator of cardiac contractility and Ca(2+) handling in myocytes.
Molecular Weight:	76750
Gene ID:	5578
NCBI Accession:	NP_002728
UniProt:	P17252
Pathways:	WNT Signaling , TCR Signaling , EGFR Signaling Pathway , Neurotrophin Signaling Pathway , Thyroid Hormone Synthesis , cAMP Metabolic Process , Myometrial Relaxation and Contraction , Cell-Cell Junction Organization , Regulation of G-Protein Coupled Receptor Protein Signaling , G-protein mediated Events , Signaling Events mediated by VEGFR1 and VEGFR2 , Interaction of EGFR with phospholipase C-gamma , Thromboxane A2 Receptor Signaling , VEGFR1 Specific Signals , VEGF Signaling

Application Details

Application Notes:	IF: 1:10~50. WB: 1:1000. IHC-P: 1:10~50. FC: 1:10~50
Restrictions:	For Research Use only

Handling

Format:	Liquid
Buffer:	Purified polyclonal antibody supplied in PBS with 0.09 % (W/V) sodium azide.
Preservative:	Sodium azide
Precaution of Use:	This product contains Sodium azide: a POISONOUS AND HAZARDOUS SUBSTANCE which

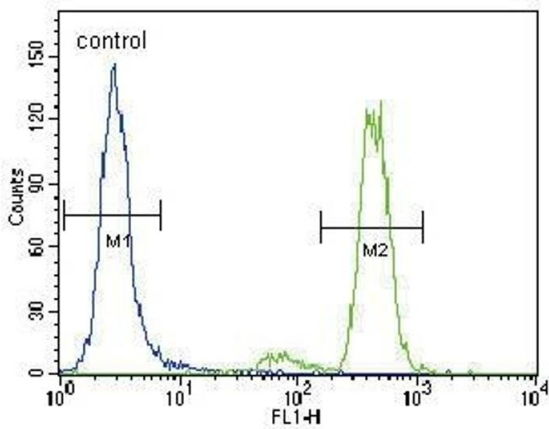
Handling

	should be handled by trained staff only.
Storage:	4 °C,-20 °C
Storage Comment:	Maintain refrigerated at 2-8 °C for up to 6 months. For long term storage store at -20 °C in small aliquots to prevent freeze-thaw cycles.
Expiry Date:	6 months

Publications

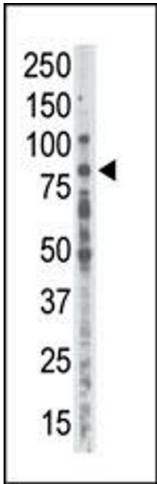
Product cited in:	Ewing, Chu, Elisma, Li, Taylor, Climie, McBroom-Cerajewski, Robinson, OConnor, Li, Taylor, Dharsee, Ho, Heilbut, Moore, Zhang, Ornatsky, Bukhman, Ethier, Sheng, Vasilescu, Abu-Farha, Lambert, Duewel et al.: "Large-scale mapping of human protein-protein interactions by mass spectrometry. ..." in: Molecular systems biology , Vol. 3, pp. 89, (2007) (PubMed).
-------------------	--

Images



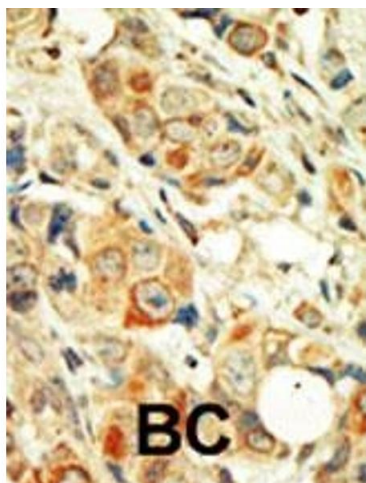
Flow Cytometry

Image 1. PKC alpha Antibody (C-term) (ABIN391001 and ABIN2841177) flow cytometric analysis of Hela cells (right histogram) compared to a negative control cell (left histogram).FITC-conjugated goat-anti-rabbit secondary antibodies were used for the analysis.



Western Blotting

Image 2. Western blot analysis of anti-PKCalpha Pab (ABIN391001 and ABIN2841177) in placenta lysate. PKCalpha (arrow) was detected using purified Pab. Secondary HRP-anti-rabbit was used for signal visualization with chemiluminescence.



Immunohistochemistry (Paraffin-embedded Sections)

Image 3. Formalin-fixed and paraffin-embedded human cancer tissue reacted with the primary antibody, which was peroxidase-conjugated to the secondary antibody, followed by DAB staining. This data demonstrates the use of this antibody for immunohistochemistry, clinical relevance has not been evaluated. BC = breast carcinoma, HC = hepatocarcinoma.

Please check the [product details page](#) for more images. Overall 4 images are available for ABIN391001.