

Datasheet for ABIN391007

anti-PKC epsilon antibody (N-Term)**1** Image**1** Publication[Go to Product page](#)

Overview

Quantity:	400 µL
Target:	PKC epsilon (PRKCE)
Binding Specificity:	AA 206-236, N-Term
Reactivity:	Human
Host:	Rabbit
Clonality:	Polyclonal
Application:	Western Blotting (WB)

Product Details

Immunogen:	This PKC epsilon antibody is generated from rabbits immunized with a KLH conjugated synthetic peptide between 206-236 amino acids from the N-terminal region of human PKC epsilon.
Clone:	RB1022
Isotype:	Ig Fraction
Purification:	This antibody is prepared by Saturated Ammonium Sulfate (SAS) precipitation followed by dialysis against PBS.

Target Details

Target:	PKC epsilon (PRKCE)
Alternative Name:	PKC epsilon (PRKCE Products)
Background:	Protein kinase C (PKC) is a family of serine- and threonine-specific protein kinases that can be

Target Details

activated by calcium and the second messenger diacylglycerol. PKC family members phosphorylate a wide variety of protein targets and are known to be involved in diverse cellular signaling pathways. PKC family members also serve as major receptors for phorbol esters, a class of tumor promoters. Each member of the PKC family has a specific expression profile and is believed to play a distinct role in cells. PKC epsilon is one of the PKC family members. This kinase has been shown to be involved in many different cellular functions, such as neuron channel activation, apoptosis, cardioprotection from ischemia, heat shock response, as well as insulin exocytosis. Knockout studies in mice suggest that this kinase is important for lipopolysaccharide (LPS)-mediated signaling in activated macrophages and may also play a role in controlling anxiety-like behavior.

Molecular Weight: 83674

Gene ID: 5581

NCBI Accession: [NP_005391](#)

UniProt: [Q02156](#)

Pathways: [TCR Signaling](#), [EGFR Signaling Pathway](#), [Neurotrophin Signaling Pathway](#), [Positive Regulation of Peptide Hormone Secretion](#), [Activation of Innate immune Response](#), [Cellular Response to Molecule of Bacterial Origin](#), [Regulation of Actin Filament Polymerization](#), [Myometrial Relaxation and Contraction](#), [Regulation of Carbohydrate Metabolic Process](#), [Interaction of EGFR with phospholipase C-gamma](#), [Thromboxane A2 Receptor Signaling](#)

Application Details

Application Notes: WB: 1:2000

Restrictions: For Research Use only

Handling

Format: Liquid

Buffer: Purified polyclonal antibody supplied in PBS with 0.09 % (W/V) sodium azide.

Preservative: Sodium azide

Precaution of Use: This product contains Sodium azide: a POISONOUS AND HAZARDOUS SUBSTANCE which should be handled by trained staff only.

Storage: 4 °C, -20 °C

Handling

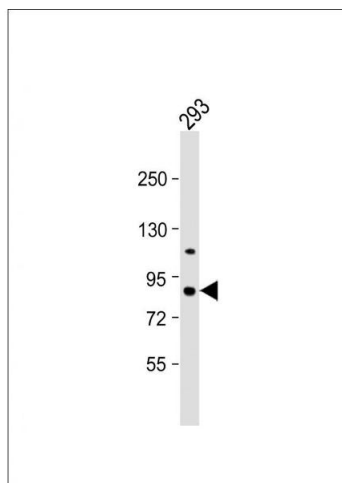
Storage Comment: Maintain refrigerated at 2-8 °C for up to 6 months. For long term storage store at -20 °C in small aliquots to prevent freeze-thaw cycles.

Expiry Date: 6 months

Publications

Product cited in: Sadeghi, Ullenhag, Wagenius, Tötterman, Eriksson: "Rapid expansion of T cells: Effects of culture and cryopreservation and importance of short-term cell recovery." in: **Acta oncologica (Stockholm, Sweden)**, Vol. 52, Issue 5, pp. 978-86, (2013) ([PubMed](#)).

Images



Western Blotting

Image 1. Anti-PKC epsilon Antibody (N-term) at 1:2000 dilution + 293 whole cell lysate Lysates/proteins at 20 µg per lane. Secondary Goat Anti-Rabbit IgG, (H+L), Peroxidase conjugated at 1/10000 dilution. Predicted band size : 84 kDa Blocking/Dilution buffer: 5 % NFDM/TBST.