

Datasheet for ABIN391008
anti-PKC eta antibody (N-Term)[Go to Product page](#)

1 Image

Overview

Quantity:	400 µL
Target:	PKC eta (PRKCH)
Binding Specificity:	AA 210-239, N-Term
Reactivity:	Human
Host:	Rabbit
Clonality:	Polyclonal
Conjugate:	This PKC eta antibody is un-conjugated
Application:	Western Blotting (WB)

Product Details

Immunogen:	This PKC eta antibody is generated from rabbits immunized with a KLH conjugated synthetic peptide between 210-239 amino acids from the N-terminal region of human PKC eta.
Clone:	RB1023
Isotype:	Ig Fraction
Purification:	This antibody is prepared by Saturated Ammonium Sulfate (SAS) precipitation followed by dialysis against PBS.

Target Details

Target:	PKC eta (PRKCH)
Alternative Name:	PKC eta (PRKCH Products)

Target Details

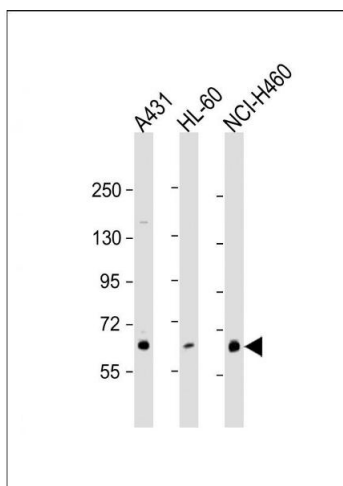
Background:	Protein kinase C (PKC) is a family of serine- and threonine-specific protein kinases that can be activated by calcium and the second messenger diacylglycerol. PKC family members phosphorylate a wide variety of protein targets and are known to be involved in diverse cellular signaling pathways. PKC family members also serve as major receptors for phorbol esters, a class of tumor promoters. Each member of the PKC family has a specific expression profile and is believed to play a distinct role in cells. PKC eta is one of the PKC family members. This protein is most abundant in lung, less in heart and skin.
Molecular Weight:	77828
Gene ID:	5583
NCBI Accession:	NP_006246
UniProt:	P24723
Pathways:	Myometrial Relaxation and Contraction , Thromboxane A2 Receptor Signaling

Application Details

Application Notes:	WB: 1:1000
Restrictions:	For Research Use only

Handling

Format:	Liquid
Buffer:	Purified polyclonal antibody supplied in PBS with 0.09 % (W/V) sodium azide.
Preservative:	Sodium azide
Precaution of Use:	This product contains Sodium azide: a POISONOUS AND HAZARDOUS SUBSTANCE which should be handled by trained staff only.
Storage:	4 °C,-20 °C
Storage Comment:	Maintain refrigerated at 2-8 °C for up to 6 months. For long term storage store at -20 °C in small aliquots to prevent freeze-thaw cycles.
Expiry Date:	6 months



Western Blotting

Image 1. All lanes : Anti-PKC η Antibody (N-term) at 1:1000 dilution Lane 1: A431 whole cell lysate Lane 2: HL-60 whole cell lysate Lane 3: NCI- whole cell lysate Lysates/proteins at 20 μ g per lane. Secondary Goat Anti-Rabbit IgG, (H+L), Peroxidase conjugated at 1/10000 dilution. Predicted band size : 78 kDa Blocking/Dilution buffer: 5 % NFDM/TBST.