

Datasheet for ABIN391010

anti-PKC iota antibody (N-Term)**3** Images**3** Publications[Go to Product page](#)

Overview

Quantity:	400 µL
Target:	PKC iota (PRKCI)
Binding Specificity:	AA 176-207, N-Term
Reactivity:	Human
Host:	Rabbit
Clonality:	Polyclonal
Conjugate:	This PKC iota antibody is un-conjugated
Application:	Western Blotting (WB), Immunohistochemistry (Paraffin-embedded Sections) (IHC (p))

Product Details

Immunogen:	This PKC iota antibody is generated from rabbits immunized with a KLH conjugated synthetic peptide between 176-207 amino acids from the N-terminal region of human PKC iota.
Clone:	RB01026
Isotype:	Ig Fraction
Purification:	This antibody is prepared by Saturated Ammonium Sulfate (SAS) precipitation followed by dialysis against PBS.

Target Details

Target:	PKC iota (PRKCI)
Alternative Name:	PKC iota (PRKCI Products)

Target Details

Background:	PKC iota belongs to the protein kinase C (PKC) family of serine/threonine protein kinases. The PKC family comprises at least eight members, which are differentially expressed and are involved in a wide variety of cellular processes. This protein kinase is calcium-independent and phospholipid-dependent. It is not activated by phorbol esters or diacylglycerol. This kinase can be recruited to vesicle tubular clusters (VTCs) by direct interaction with the small GTPase RAB2, where this kinase phosphorylates glyceraldehydes-3-phosphate dehydrogenase (GAPD/GAPDH) and plays a role in microtubule dynamics in the early secretory pathway. This kinase is found to be necessary for BCL-ABL-mediated resistance to drug-induced apoptosis and therefore protects leukemia cells against drug-induced apoptosis.
Molecular Weight:	68262
Gene ID:	5584
NCBI Accession:	NP_002731
UniProt:	P41743
Pathways:	Neurotrophin Signaling Pathway , Cell-Cell Junction Organization , Tube Formation

Application Details

Application Notes:	WB: 1:1000. WB: 1:1000. IHC-P: 1:50~100
Restrictions:	For Research Use only

Handling

Format:	Liquid
Buffer:	Purified polyclonal antibody supplied in PBS with 0.09 % (W/V) sodium azide.
Preservative:	Sodium azide
Precaution of Use:	This product contains Sodium azide: a POISONOUS AND HAZARDOUS SUBSTANCE which should be handled by trained staff only.
Storage:	4 °C, -20 °C
Storage Comment:	Maintain refrigerated at 2-8 °C for up to 6 months. For long term storage store at -20 °C in small aliquots to prevent freeze-thaw cycles.
Expiry Date:	6 months

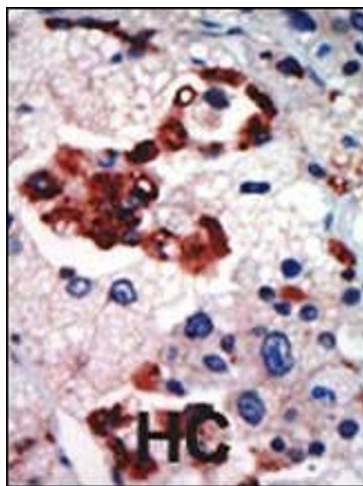
Publications

Product cited in: Lechuga, Baranwal, Ivanov: "Actin-interacting protein 1 controls assembly and permeability of intestinal epithelial apical junctions." in: **American journal of physiology. Gastrointestinal and liver physiology**, Vol. 308, Issue 9, pp. G745-56, (2015) ([PubMed](#)).

Wang, Li, Du, Lu, Zou: "Significance and expression of atypical protein kinase C-iota in human hepatocellular carcinoma." in: **The Journal of surgical research**, Vol. 154, Issue 1, pp. 143-9, (2009) ([PubMed](#)).

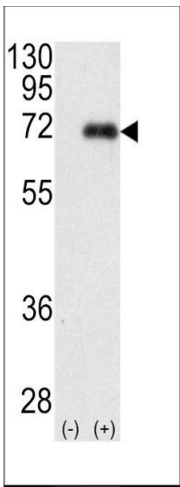
Li, Wang, Liu, Xiao, Lu, Zou: "Correlation of aPKC-iota and E-cadherin expression with invasion and prognosis of cholangiocarcinoma." in: **Hepatobiliary & pancreatic diseases international : HBPD INT**, Vol. 7, Issue 1, pp. 70-5, (2008) ([PubMed](#)).

Images



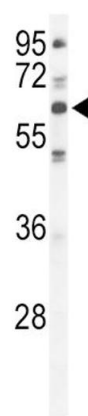
Immunohistochemistry (Paraffin-embedded Sections)

Image 1. Formalin-fixed and paraffin-embedded human cancer tissue reacted with the primary antibody, which was peroxidase-conjugated to the secondary antibody, followed by AEC staining. This data demonstrates the use of this antibody for immunohistochemistry, clinical relevance has not been evaluated. BC = breast carcinoma, HC = hepatocarcinoma.



Western Blotting

Image 2. Western blot analysis of PRKCI (arrow) using rabbit polyclonal PKC iota Antibody (N-term) (ABIN391010 and ABIN2841183). 293 cell lysates (2 µg/lane) either nontransfected (Lane 1) or transiently transfected with the PRKCI gene (Lane 2) (Origene Technologies).



Western Blotting

Image 3. Western blot analysis of hPKC-iota- (ABIN391010 and ABIN2841183) in Hela cell line lysates (35 µg/lane).PKC (arrow) was detected using the purified Pab.