



[Go to Product page](#)

Datasheet for ABIN391017

## anti-PKC theta antibody (C-Term)

### 2 Images

#### Overview

Quantity:	400 µL
Target:	PKC theta (PRKCQ)
Binding Specificity:	AA 318-348, C-Term
Reactivity:	Human
Host:	Rabbit
Clonality:	Polyclonal
Conjugate:	This PKC theta antibody is un-conjugated
Application:	Western Blotting (WB), Immunohistochemistry (Paraffin-embedded Sections) (IHC (p))

#### Product Details

Immunogen:	This PKC theta antibody is generated from rabbits immunized with a KLH conjugated synthetic peptide between 318-348 amino acids from the C-terminal region of human PKC theta.
Clone:	RB01242
Isotype:	Ig Fraction
Purification:	This antibody is prepared by Saturated Ammonium Sulfate (SAS) precipitation followed by dialysis against PBS.

#### Target Details

Target:	PKC theta (PRKCQ)
Alternative Name:	PKC theta ( <a href="#">PRKCQ Products</a> )

## Target Details

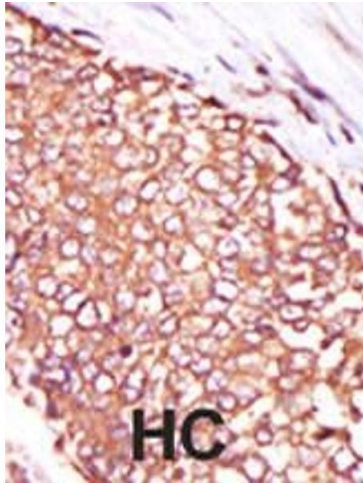
---

Background:	Protein kinase C (PKC) is a family of serine- and threonine-specific protein kinases that can be activated by calcium and the second messenger diacylglycerol. PKC family members phosphorylate a wide variety of protein targets and are known to be involved in diverse cellular signaling pathways. PKC family members also serve as major receptors for phorbol esters, a class of tumor promoters. Each member of the PKC family has a specific expression profile and is believed to play a distinct role. PKC theta is one of the PKC family members. It is a calcium-independent and phospholipid-dependent protein kinase. This kinase is important for T-cell activation. It is required for the activation of the transcription factors NF-kappaB and AP-1, and may link the T cell receptor (TCR) signaling complex to the activation of the transcription factors.
Molecular Weight:	81865
Gene ID:	5588
NCBI Accession:	<a href="#">NP_001229342</a> , <a href="#">NP_006248</a>
UniProt:	<a href="#">Q04759</a>
Pathways:	<a href="#">TCR Signaling</a> , <a href="#">Fc-epsilon Receptor Signaling Pathway</a> , <a href="#">Myometrial Relaxation and Contraction</a> , <a href="#">Regulation of G-Protein Coupled Receptor Protein Signaling</a> , <a href="#">Thromboxane A2 Receptor Signaling</a>

## Application Details

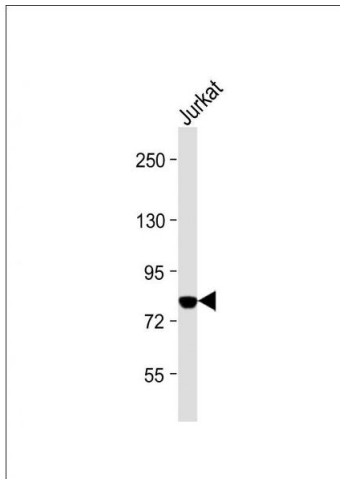
---

Application Notes:	WB: 1:2000. IHC-P: 1:50~100
Restrictions:	For Research Use only
Handling	
Format:	Liquid
Buffer:	Purified polyclonal antibody supplied in PBS with 0.09 % (W/V) sodium azide.
Preservative:	Sodium azide
Precaution of Use:	This product contains Sodium azide: a POISONOUS AND HAZARDOUS SUBSTANCE which should be handled by trained staff only.
Storage:	4 °C,-20 °C
Storage Comment:	Maintain refrigerated at 2-8 °C for up to 6 months. For long term storage store at -20 °C in small aliquots to prevent freeze-thaw cycles.



### Immunohistochemistry (Paraffin-embedded Sections)

**Image 1.** Formalin-fixed and paraffin-embedded human cancer tissue reacted with the primary antibody, which was peroxidase-conjugated to the secondary antibody, followed by DAB staining. This data demonstrates the use of this antibody for immunohistochemistry, clinical relevance has not been evaluated. BC = breast carcinoma, HC = hepatocarcinoma.



### Western Blotting

**Image 2.** Anti-PKC theta Antibody (C-term) at 1:2000 dilution + Jurkat whole cell lysate Lysates/proteins at 20 µg per lane. Secondary Goat Anti-Rabbit IgG, (H+L), Peroxidase conjugated at 1/10000 dilution. Predicted band size : 82 kDa  
Blocking/Dilution buffer: 5 % NFDN/TBST.