

Datasheet for ABIN391018

**anti-PKC zeta antibody (N-Term)****2** Images**1** Publication[Go to Product page](#)

## Overview

Quantity:	400 µL
Target:	PKC zeta (PRKCZ)
Binding Specificity:	AA 166-197, N-Term
Reactivity:	Human
Host:	Rabbit
Clonality:	Polyclonal
Conjugate:	This PKC zeta antibody is un-conjugated
Application:	Western Blotting (WB), Immunohistochemistry (Paraffin-embedded Sections) (IHC (p))

## Product Details

Immunogen:	This PKC zeta antibody is generated from rabbits immunized with a KLH conjugated synthetic peptide between 166-197 amino acids from the N-terminal region of human PKC zeta.
Clone:	RB01027
Isotype:	Ig Fraction
Purification:	This antibody is prepared by Saturated Ammonium Sulfate (SAS) precipitation followed by dialysis against PBS.

## Target Details

Target:	PKC zeta (PRKCZ)
Alternative Name:	PKC zeta ( <a href="#">PRKCZ Products</a> )

## Target Details

Background:	Protein kinase C (PKC) zeta is a member of the PKC family of serine/threonine kinases which are involved in a variety of cellular processes such as proliferation, differentiation and secretion. Unlike the classical PKC isoenzymes which are calcium-dependent, PKC zeta exhibits a constitutive kinase activity which is independent of calcium, and PKC activators, phosphatidylserine and diacylglycerol. Furthermore, it is insensitive to PKC inhibitors and cannot be activated by phorbol ester. The structural and biochemical properties indicate that the zeta subspecies is related to, but distinct from other isoenzymes of PKC.
Molecular Weight:	67660
Gene ID:	5590
NCBI Accession:	<a href="#">NP_001028753</a> , <a href="#">NP_001028754</a> , <a href="#">NP_001229803</a> , <a href="#">NP_002735</a>
UniProt:	<a href="#">Q05513</a>
Pathways:	<a href="#">NF-kappaB Signaling</a> , <a href="#">RTK Signaling</a> , <a href="#">Myometrial Relaxation and Contraction</a> , <a href="#">Regulation of Leukocyte Mediated Immunity</a> , <a href="#">Positive Regulation of Immune Effector Process</a> , <a href="#">Synaptic Membrane</a> , <a href="#">Production of Molecular Mediator of Immune Response</a> , <a href="#">CXCR4-mediated Signaling Events</a> , <a href="#">Thromboxane A2 Receptor Signaling</a>

## Application Details

Application Notes:	WB: 1:1000. IHC-P: 1:10~50
Restrictions:	For Research Use only

## Handling

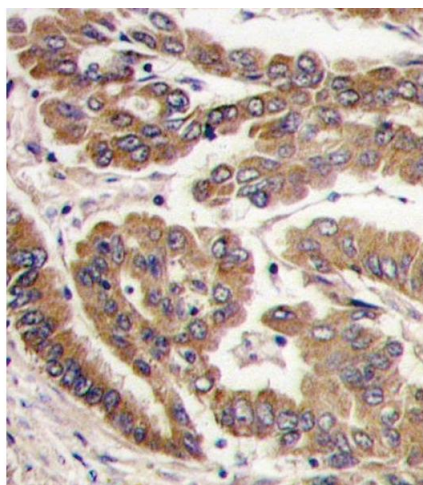
Format:	Liquid
Buffer:	Purified polyclonal antibody supplied in PBS with 0.09 % (W/V) sodium azide.
Preservative:	Sodium azide
Precaution of Use:	This product contains Sodium azide: a POISONOUS AND HAZARDOUS SUBSTANCE which should be handled by trained staff only.
Storage:	4 °C,-20 °C
Storage Comment:	Maintain refrigerated at 2-8 °C for up to 6 months. For long term storage store at -20 °C in small aliquots to prevent freeze-thaw cycles.
Expiry Date:	6 months

## Publications

Product cited in: Humphrey, Newcomb, Yu, Hao, Yu, Krajewski, Du, Jhala: "Mixed lineage kinase-3 stabilizes and functionally cooperates with TRIBBLES-3 to compromise mitochondrial integrity in cytokine-induced death of pancreatic beta cells." in: **The Journal of biological chemistry**, Vol. 285, Issue 29, pp. 22426-36, (2010) ([PubMed](#)).

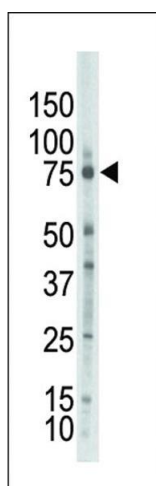
Nagao, Hayashi: "Mixed lineage kinase 2 and hippocalcin are localized in Lewy bodies of Parkinson's disease." in: **Journal of the neurological sciences**, Vol. 281, Issue 1-2, pp. 51-4, (2009) ([PubMed](#)).

## Images



### Immunohistochemistry (Paraffin-embedded Sections)

**Image 1.** Formalin-fixed and paraffin-embedded human lung carcinoma tissue reacted with PKC zeta antibody (N-term), which was peroxidase-conjugated to the secondary antibody, followed by DAB staining. This data demonstrates the use of this antibody for immunohistochemistry, clinical relevance has not been evaluated.



### Western Blotting

**Image 2.** Western blot analysis of anti-PKCzeta Pab (ABIN391018 and ABIN2841189) in placenta lysate. PKCzeta (arrow) was detected using purified Pab. Secondary HRP-anti-rabbit was used for signal visualization with chemiluminescence.