



[Go to Product page](#)

Datasheet for ABIN391021
anti-AKT2 antibody (N-Term)

4 Images

Overview

Quantity:	400 µL
Target:	AKT2
Binding Specificity:	AA 93-123, N-Term
Reactivity:	Human
Host:	Rabbit
Clonality:	Polyclonal
Application:	Western Blotting (WB), Immunofluorescence (IF), Immunohistochemistry (Paraffin-embedded Sections) (IHC (p)), Flow Cytometry (FACS)

Product Details

Immunogen:	This AKT2 antibody is generated from rabbits immunized with a KLH conjugated synthetic peptide between 93-123 amino acids from the N-terminal region of human AKT2.
Clone:	RB11646
Isotype:	Ig Fraction
Purification:	This antibody is prepared by Saturated Ammonium Sulfate (SAS) precipitation followed by dialysis against PBS.

Target Details

Target:	AKT2
Alternative Name:	AKT2 (AKT2 Products)
Background:	AKT2 is a putative oncogene encoding a protein belonging to a subfamily of serine/threonine

Target Details

kinases containing SH2-like (Src homology 2-like) domains. Furthermore, AKT2 was shown to be amplified and overexpressed in 2 of 8 ovarian carcinoma cell lines and 2 of 15 primary ovarian tumors. Overexpression of AKT2 contributes to the malignant phenotype of a subset of human ductal pancreatic cancers. AKT2 is a general protein kinase capable of phosphorylating several known proteins.

Molecular Weight: 55769

Gene ID: 208

NCBI Accession: [NP_001617](#)

UniProt: [P31751](#)

Pathways: [PI3K-Akt Signaling](#), [RTK Signaling](#), [AMPK Signaling](#), [TLR Signaling](#), [Cellular Glucan Metabolic Process](#), [Regulation of Carbohydrate Metabolic Process](#), [Hepatitis C](#), [VEGF Signaling](#)

Application Details

Application Notes: IF: 1:10~50. WB: 1:1000. IHC-P: 1:50~100. FC: 1:10~50

Restrictions: For Research Use only

Handling

Format: Liquid

Buffer: Purified polyclonal antibody supplied in PBS with 0.09 % (W/V) sodium azide.

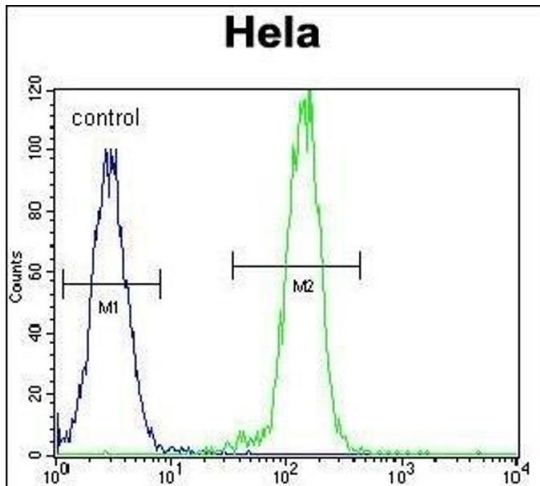
Preservative: Sodium azide

Precaution of Use: This product contains Sodium azide: a POISONOUS AND HAZARDOUS SUBSTANCE which should be handled by trained staff only.

Storage: 4 °C, -20 °C

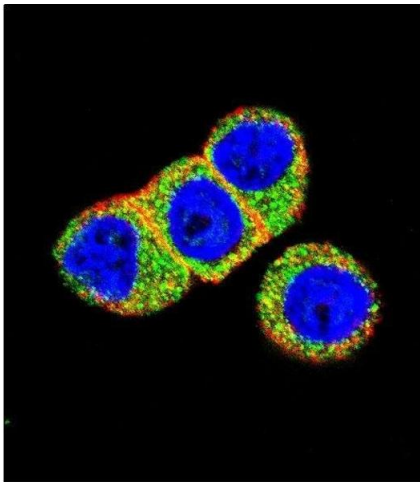
Storage Comment: Maintain refrigerated at 2-8 °C for up to 6 months. For long term storage store at -20 °C in small aliquots to prevent freeze-thaw cycles.

Expiry Date: 6 months



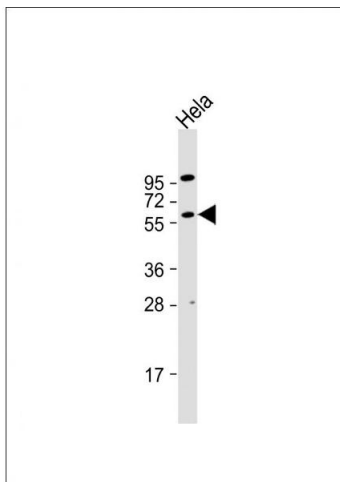
Flow Cytometry

Image 1. AKT2 Antibody (N-term) (ABIN391021 and ABIN2841191) flow cytometric analysis of HeLa cells (right histogram) compared to a negative control cell (left histogram). FITC-conjugated goat-anti-rabbit secondary antibodies were used for the analysis.



Immunofluorescence

Image 2. Confocal immunofluorescent analysis of AKT2 Antibody (N-term) (ABIN391021 and ABIN2841191) with HeLa cell followed by Alexa Fluor 488-conjugated goat anti-rabbit IgG (green). Actin filaments have been labeled with Alexa Fluor 555 phalloidin (red). DAPI was used to stain the cell nuclear (blue).



Western Blotting

Image 3. Anti-AKT2 Antibody (N-term) at 1:1000 dilution + HeLa whole cell lysate Lysates/proteins at 20 µg per lane. Secondary Goat Anti-Rabbit IgG, (H+L), Peroxidase conjugated at 1/10000 dilution. Predicted band size :56 kDa Blocking/Dilution buffer: 5 % NFDN/TBST.

Please check the [product details page](#) for more images. Overall 4 images are available for ABIN391021.