

Datasheet for ABIN391023
anti-AKT2 antibody (AA 93-123)

5 Images

[Go to Product page](#)

Overview

Quantity:	400 µL
Target:	AKT2
Binding Specificity:	AA 93-123
Reactivity:	Human
Host:	Rabbit
Clonality:	Polyclonal
Conjugate:	This AKT2 antibody is un-conjugated
Application:	Western Blotting (WB), Immunofluorescence (IF), Immunohistochemistry (Paraffin-embedded Sections) (IHC (p)), Flow Cytometry (FACS)

Product Details

Immunogen:	This AKT2 antibody is generated from rabbits immunized with a KLH conjugated synthetic peptide between 93-123 amino acids from the Central region of human AKT2.
Clone:	RB3026
Isotype:	Ig Fraction
Purification:	This antibody is purified through a protein A column, followed by peptide affinity purification.

Target Details

Target:	AKT2
Alternative Name:	AKT2 (AKT2 Products)

Target Details

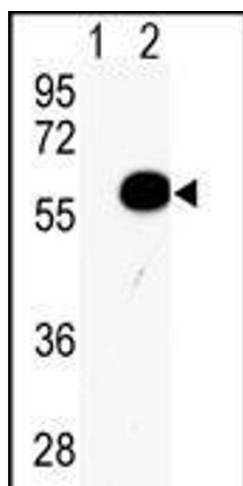
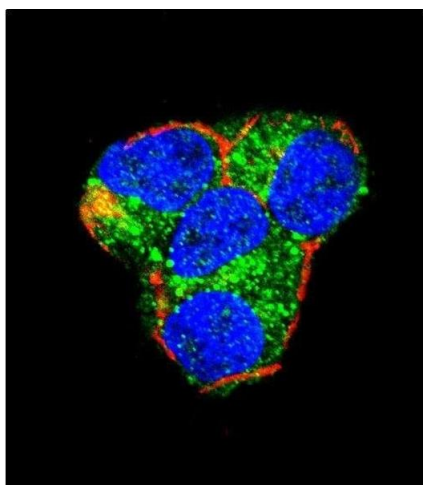
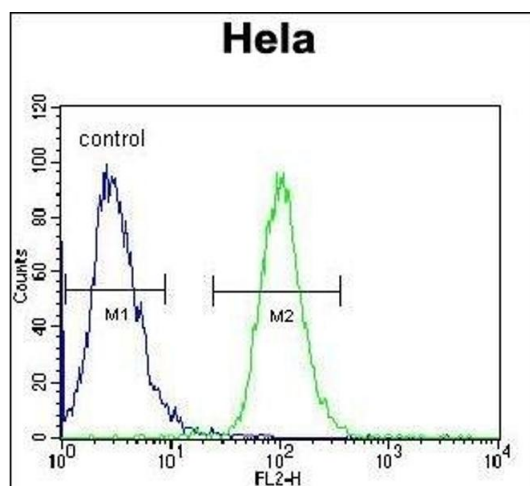
Background:	AKT2 is a putative oncogenic protein belonging to a subfamily of serine/threonine kinases containing SH2-like (Src homology 2-like) domains. Furthermore, AKT2 was shown to be amplified and overexpressed in 2 of 8 ovarian carcinoma cell lines and 2 of 15 primary ovarian tumors. Overexpression of AKT2 contributes to the malignant phenotype of a subset of human ductal pancreatic cancers. AKT2 is a general protein kinase capable of phosphorylating several known proteins.
Molecular Weight:	55769
Gene ID:	208
NCBI Accession:	NP_001617
UniProt:	P31751
Pathways:	PI3K-Akt Signaling , RTK Signaling , AMPK Signaling , TLR Signaling , Cellular Glucan Metabolic Process , Regulation of Carbohydrate Metabolic Process , Hepatitis C , VEGF Signaling

Application Details

Application Notes:	IF: 1:10~50. WB: 1:1000. WB: 1:1000. IHC-P: 1:10~50. FC: 1:10~50
Restrictions:	For Research Use only

Handling

Format:	Liquid
Buffer:	Purified polyclonal antibody supplied in PBS with 0.09 % (W/V) sodium azide.
Preservative:	Sodium azide
Precaution of Use:	This product contains Sodium azide: a POISONOUS AND HAZARDOUS SUBSTANCE which should be handled by trained staff only.
Storage:	4 °C,-20 °C
Storage Comment:	Maintain refrigerated at 2-8 °C for up to 6 months. For long term storage store at -20 °C in small aliquots to prevent freeze-thaw cycles.
Expiry Date:	6 months



Flow Cytometry

Image 1. AKT2 Antibody (Center) (ABIN391023 and ABIN2841193) flow cytometric analysis of Hela cells (right histogram) compared to a negative control cell (left histogram). FITC-conjugated goat-anti-rabbit secondary antibodies were used for the analysis.

Immunofluorescence

Image 2. Confocal immunofluorescent analysis of AKT2 Antibody (Center) (ABIN391023 and ABIN2841193) with 293 cell followed by Alexa Fluor 488-conjugated goat anti-rabbit IgG (green). Actin filaments have been labeled with Alexa Fluor 555 phalloidin (red). DAPI was used to stain the cell nuclear (blue).

Western Blotting

Image 3. Western blot analysis of AKT2 (arrow) using rabbit polyclonal AKT2 Antibody (Center) (ABIN391023 and ABIN2841193). 293 cell lysates (2 µg/lane) either nontransfected (Lane 1) or transiently transfected with the AKT2 gene (Lane 2) (Origene Technologies).

Please check the [product details page](#) for more images. Overall 5 images are available for ABIN391023.