

Datasheet for ABIN391030
anti-MOBKL1A antibody (C-Term)

4 Images

2 Publications

[Go to Product page](#)

Overview

Quantity:	400 µL
Target:	MOBKL1A (MOB1B)
Binding Specificity:	AA 177-206, C-Term
Reactivity:	Human
Host:	Rabbit
Clonality:	Polyclonal
Conjugate:	This MOBKL1A antibody is un-conjugated
Application:	Western Blotting (WB), Immunofluorescence (IF), Immunohistochemistry (Paraffin-embedded Sections) (IHC (p))

Product Details

Immunogen:	This MOB4A antibody is generated from rabbits immunized with a KLH conjugated synthetic peptide between 177-206 amino acids from the C-terminal region of human MOB4A.
Clone:	RB12538
Isotype:	Ig Fraction
Predicted Reactivity:	M, Rat
Purification:	This antibody is prepared by Saturated Ammonium Sulfate (SAS) precipitation followed by dialysis against PBS.

Target Details

Target:	MOBKL1A (MOB1B)
---------	-----------------

Target Details

Alternative Name:	MOB4A (MOB1B Products)
Background:	MOB4A is similar to the yeast Mob1 protein. Yeast Mob1 binds Mps1p, a protein kinase essential for spindle pole body duplication and mitotic checkpoint regulation. Mob4A regulates NDR1 and NDR2 kinase activity, widely expressed nuclear serine-threonine kinases that have been implicated in cell proliferation and/or tumor progression.
Molecular Weight:	25091
Gene ID:	92597
NCBI Accession:	NP_001231695 , NP_775739
UniProt:	Q7L9L4

Application Details

Application Notes:	IF: 1:10~50. WB: 1:1000. WB: 1:1000. IHC-P: 1:10~50
Restrictions:	For Research Use only

Handling

Format:	Liquid
Buffer:	Purified polyclonal antibody supplied in PBS with 0.09 % (W/V) sodium azide.
Preservative:	Sodium azide
Precaution of Use:	This product contains Sodium azide: a POISONOUS AND HAZARDOUS SUBSTANCE which should be handled by trained staff only.
Storage:	4 °C,-20 °C
Storage Comment:	Maintain refrigerated at 2-8 °C for up to 6 months. For long term storage store at -20 °C in small aliquots to prevent freeze-thaw cycles.
Expiry Date:	6 months

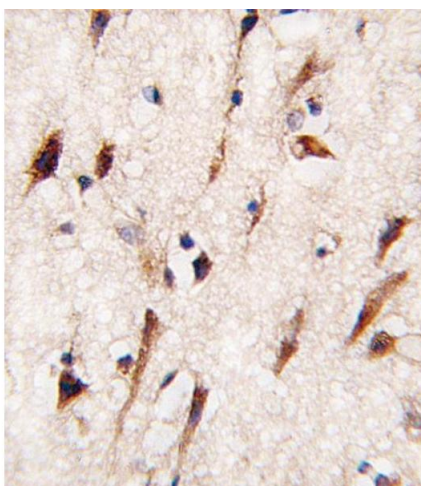
Publications

Product cited in:	Nishio, Hamada, Kawahara, Sasaki, Noguchi, Chiba, Mizuno, Suzuki, Dong, Tokuda, Morikawa, Hikasa, Eggenschwiler, Yabuta, Nojima, Nakagawa, Hata, Nishina, Mimori, Mori, Sasaki, Mak, Nakano, Itami et al.: "Cancer susceptibility and embryonic lethality in Mob1a/1b double-mutant mice. ..." in: The Journal of clinical investigation , Vol. 122, Issue 12, pp. 4505-18, (2012) (
-------------------	---

[PubMed](#)).

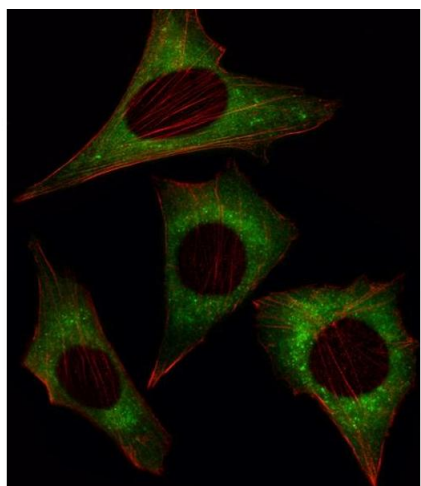
Wilmeth, Shrestha, Montañó, Rashe, Shuster: "Mutual dependence of Mob1 and the chromosomal passenger complex for localization during mitosis." in: **Molecular biology of the cell**, Vol. 21, Issue 3, pp. 380-92, (2010) ([PubMed](#)).

Images



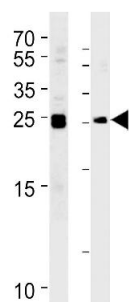
Immunohistochemistry (Paraffin-embedded Sections)

Image 1. Formalin-fixed and paraffin-embedded human brain tissue reacted with MOB4A antibody (C-term) (ABIN391030 and ABIN2841198), which was peroxidase-conjugated to the secondary antibody, followed by DAB staining. This data demonstrates the use of this antibody for immunohistochemistry, clinical relevance has not been evaluated.



Immunofluorescence

Image 2. Fluorescent image of NIH/3T3 cell stained with MOB4A Antibody (C-term) (ABIN391030 and ABIN2841198). NIH/3T3 cells were fixed with 4 % PFA (20 min), permeabilized with Triton X-100 (0.1 %, 10 min), then incubated with MOB4A primary antibody (1:25, 1 h at 37 °C). For secondary antibody, Alexa Fluor® 488 conjugated donkey anti-rabbit antibody (green) was used (1:400, 50 min at 37 °C). Cytoplasmic actin was counterstained with Alexa Fluor® 555 (red) conjugated Phalloidin (7 units/mL, 1 h at 37 °C). MOB4A immunoreactivity is localized to Cytoplasm significantly.



Western Blotting

Image 3. MOB4A Antibody (C-term) (ABIN391030 and ABIN2841198) western blot analysis in Daudi, K562 cell line lysates (35 µg/lane). This demonstrates the MOB4A antibody detected the MOB4A protein (arrow).

Please check the [product details page](#) for more images. Overall 4 images are available for ABIN391030.