



[Go to Product page](#)

Datasheet for ABIN391052 **anti-PKM2 antibody (N-Term)**

2 Images

1 Publication

Overview

Quantity:	400 µL
Target:	PKM2
Binding Specificity:	AA 121-151, N-Term
Reactivity:	Human, Mouse
Host:	Rabbit
Clonality:	Polyclonal
Conjugate:	This PKM2 antibody is un-conjugated
Application:	Western Blotting (WB)

Product Details

Immunogen:	This Pyruvate Kinase (PKM2) antibody is generated from rabbits immunized with a KLH conjugated synthetic peptide between 121-151 amino acids from the N-terminal region of human Pyruvate Kinase (PKM2).
Clone:	RB5870
Isotype:	Ig Fraction
Predicted Reactivity:	Rb, Rat
Purification:	This antibody is prepared by Saturated Ammonium Sulfate (SAS) precipitation followed by dialysis against PBS.

Target Details

Target:	PKM2
---------	------

Target Details

Alternative Name:	Pyruvate Kinase (PKM2) (PKM2 Products)
Background:	PKM2 is a pyruvate kinase that catalyzes the production of phosphoenolpyruvate from pyruvate and ATP. This protein has been shown to interact with thyroid hormone, and thus may mediate cellular metabolic effects induced by thyroid hormones. This protein has been found to bind Opa protein, a bacterial outer membrane protein involved in gonococcal adherence to and invasion of human cells, suggesting a role of this protein in bacterial pathogenesis.
Molecular Weight:	57937
Gene ID:	5315
NCBI Accession:	NP_001193725 , NP_001193726 , NP_001193727 , NP_001193728 , NP_002645 , NP_872270 , NP_872271
UniProt:	P14618
Pathways:	Warburg Effect

Application Details

Application Notes:	WB: 1:2000. WB: 1:2000
Restrictions:	For Research Use only

Handling

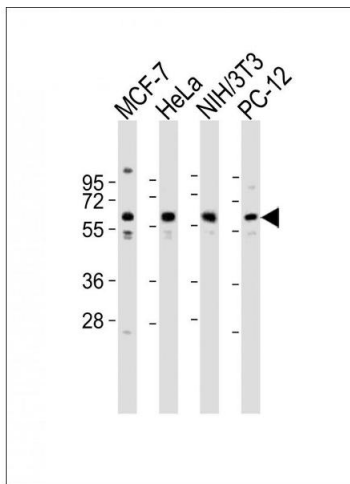
Format:	Liquid
Buffer:	Purified polyclonal antibody supplied in PBS with 0.09 % (W/V) sodium azide.
Preservative:	Sodium azide
Precaution of Use:	This product contains Sodium azide: a POISONOUS AND HAZARDOUS SUBSTANCE which should be handled by trained staff only.
Storage:	4 °C,-20 °C
Storage Comment:	Maintain refrigerated at 2-8 °C for up to 6 months. For long term storage store at -20 °C in small aliquots to prevent freeze-thaw cycles.
Expiry Date:	6 months

Publications

Product cited in:	Ewing, Chu, Elisma, Li, Taylor, Climie, McBroom-Cerajewski, Robinson, OConnor, Li, Taylor,
-------------------	--

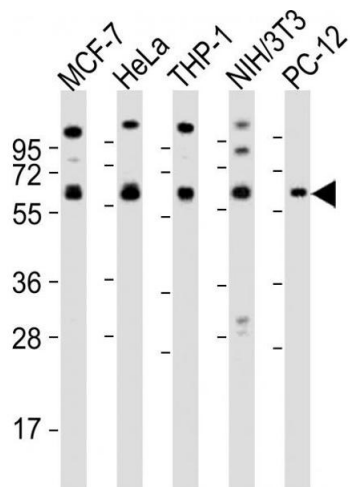
Dharsee, Ho, Heilbut, Moore, Zhang, Ornatsky, Bukhman, Ethier, Sheng, Vasilescu, Abu-Farha, Lambert, Duewel et al.: "Large-scale mapping of human protein-protein interactions by mass spectrometry. ..." in: **Molecular systems biology**, Vol. 3, pp. 89, (2007) ([PubMed](#)).

Images



Western Blotting

Image 1. All lanes : Anti-PKM2 antibody at 1:2000 dilution
 Lane 1: MCF-7 whole cell lysates Lane 2: HeLa whole cell lysates Lane 3: NIH/3T3 whole cell lysates Lane 4: PC-12 whole cell lysates Lysates/proteins at 20 µg per lane. Secondary Goat Anti-Rabbit IgG, (H+L), Peroxidase conjugated at 1/10000 dilution Predicted band size : 58 kDa Blocking/Dilution buffer: 5 % NFDm/TBST.



Western Blotting

Image 2. All lanes : Anti-PKM2 antibody at 1:2000 dilution
 Lane 1: MCF-7 whole cell lysates Lane 2: HeLa whole cell lysates Lane 3: THP-1 whole cell lysates Lane 4: NIH/3T3 whole cell lysates Lane 5: PC-12 whole cell lysates Lysates/proteins at 20 µg per lane. Secondary Goat Anti-Rabbit IgG, (H+L), Peroxidase conjugated at 1/10000 dilution Predicted band size : 58 kDa Blocking/Dilution buffer: 5 % NFDm/TBST.