



[Go to Product page](#)

Datasheet for ABIN391053

anti-PKM2 antibody (C-Term)

5 Images

1 Publication

Overview

Quantity:	200 µL
Target:	PKM2
Binding Specificity:	AA 476-505, C-Term
Reactivity:	Human, Mouse, Rat, Monkey
Host:	Rabbit
Clonality:	Polyclonal
Conjugate:	This PKM2 antibody is un-conjugated
Application:	Western Blotting (WB), Immunohistochemistry (Paraffin-embedded Sections) (IHC (p)), Immunofluorescence (IF)

Product Details

Immunogen:	This Pyruvate Kinase (PKM2) antibody is generated from rabbits immunized with a KLH conjugated synthetic peptide between 476-505 amino acids from the C-terminal region of human Pyruvate Kinase (PKM2).
Clone:	RB3697
Isotype:	Ig Fraction
Purification:	This antibody is prepared by Saturated Ammonium Sulfate (SAS) precipitation followed by dialysis against PBS.

Target Details

Target:	PKM2
---------	------

Target Details

Alternative Name:	PKM2 (PKM2 Products)
Background:	There are 4 isozymes of pyruvate kinase in mammals: L, R, M1 and M2. PKM2 is a pyruvate kinase that catalyzes the production of phosphoenolpyruvate from pyruvate and ATP. This protein has been shown to interact with thyroid hormone, and thus may mediate cellular metabolic effects induced by thyroid hormones. This protein has been found to bind Opa protein, a bacterial outer membrane protein involved in gonococcal adherence to and invasion of human cells, suggesting a role of this protein in bacterial pathogenesis.
Molecular Weight:	57937
Gene ID:	5315
NCBI Accession:	NP_001193725 , NP_001193726 , NP_001193727 , NP_001193728 , NP_002645 , NP_872270 , NP_872271
UniProt:	P14618
Pathways:	Warburg Effect

Application Details

Application Notes:	IF: 1:200. WB: 1:1000. WB: 1:1000. WB: 1:2000. IHC-P: 1:50~1:100
Restrictions:	For Research Use only

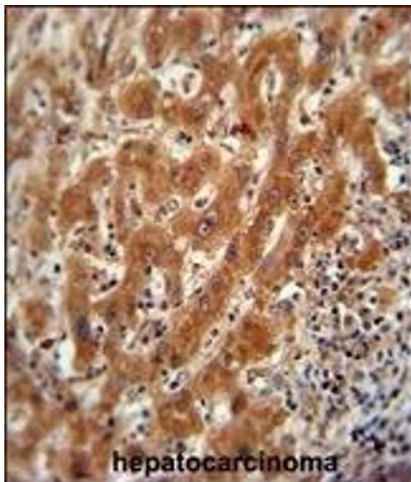
Handling

Format:	Liquid
Buffer:	Purified polyclonal antibody supplied in PBS with 0.09 % (W/V) sodium azide.
Preservative:	Sodium azide
Precaution of Use:	This product contains Sodium azide: a POISONOUS AND HAZARDOUS SUBSTANCE which should be handled by trained staff only.
Handling Advice:	Avoid freeze-thaw cycles.
Storage:	4 °C,-20 °C
Storage Comment:	Maintain refrigerated at 2-8 °C for up to 6 months. For long term storage store at -20 °C in small aliquots.
Expiry Date:	6 months

Product cited in:

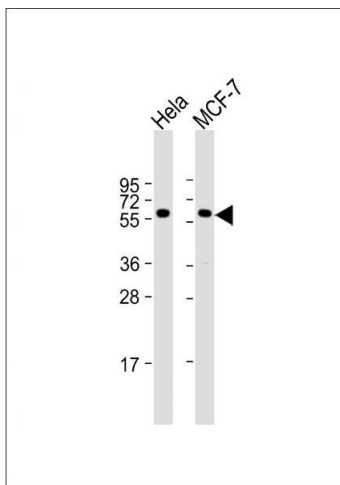
Humbert, Navaratnam, Augert, Da Costa, Martien, Wang, Martinez, Abbadie, Carling, de Launoit, Gil, Bernard: "Regulation of ploidy and senescence by the AMPK-related kinase NUA1." in: **The EMBO journal**, Vol. 29, Issue 2, pp. 376-86, (2010) ([PubMed](#)).

Images



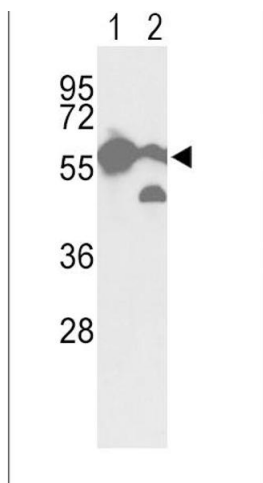
Immunohistochemistry (Paraffin-embedded Sections)

Image 1. Pyruvate Kinase (PKM2) Antibody (C-term) (ABIN391053 and ABIN2837941) immunohistochemistry analysis in formalin fixed and paraffin embedded human hepatocarcinoma followed by peroxidase conjugation of the secondary antibody and DAB staining. This data demonstrates the use of the Pyruvate Kinase (PKM2) Antibody (C-term) for immunohistochemistry. Clinical relevance has not been evaluated.



Western Blotting

Image 2. All lanes : Anti-PKM2 Antibody at 1:1000 dilution
Lane 1: HeLa whole cell lysate Lane 2: MCF-7 whole cell lysate
Lysates/proteins at 20 µg per lane. Secondary Goat Anti-Rabbit IgG, (H+L), Peroxidase conjugated at 1/10000 dilution. Predicted band size : 58 kDa
Blocking/Dilution buffer: 5 % NFDM/TBST.



Western Blotting

Image 3. Western blot analysis of hPKM2- in cell line(lane 1) and mouse brain tissue(lane 2) lysates (35 µg/lane). PKM2 (arrow) was detected using the purified Pab.

Images

Please check the [product details page](#) for more images. Overall 5 images are available for ABIN391053.