



[Go to Product page](#)

Datasheet for ABIN391074  
**anti-CKB antibody (C-Term)**

2 Images

Overview

Quantity:	400 µL
Target:	CKB
Binding Specificity:	AA 240-270, C-Term
Reactivity:	Human, Mouse
Host:	Rabbit
Clonality:	Polyclonal
Conjugate:	This CKB antibody is un-conjugated
Application:	Western Blotting (WB)

Product Details

Immunogen:	This Creatine Kinase B antibody is generated from rabbits immunized with a KLH conjugated synthetic peptide between 240-270 amino acids from the C-terminal region of human Creatine Kinase B.
Clone:	RB05444
Isotype:	Ig Fraction
Purification:	This antibody is prepared by Saturated Ammonium Sulfate (SAS) precipitation followed by dialysis against PBS.

Target Details

Target:	CKB
Alternative Name:	Creatine Kinase BB (CKB) ( <a href="#">CKB Products</a> )

## Target Details

---

**Background:** Creatine Kinase (CK) is a dimeric enzyme composed of either M- or B-type subunits. The resulting isoenzymes are expressed at varying levels in different tissues. CK-BB, a cytoplasmic predominantly found in brain tissues, participates in energy homeostasis, reversibly catalyzing the transfer of a phosphate group between ATP and target proteins such as a creatine phosphate. CK-BB exists in normally negligible amounts in the serum of adults, overexpression of CK-BB is associated with cancers of the breast, ovary, prostate, colon, and in small-cell lung cancer. Global assessment of changes in serum levels of CK-BB, CK-MB and CK-MM, are used as a marker for myocardial infarction.

---

**Molecular Weight:** 42644

---

**Gene ID:** 1152

---

**NCBI Accession:** [NP\\_001814](#)

---

**UniProt:** [P12277](#)

## Application Details

---

**Application Notes:** WB: 1:1000. WB: 1:1000

---

**Restrictions:** For Research Use only

## Handling

---

**Format:** Liquid

---

**Buffer:** Purified polyclonal antibody supplied in PBS with 0.09 % (W/V) sodium azide.

---

**Preservative:** Sodium azide

---

**Precaution of Use:** This product contains Sodium azide: a POISONOUS AND HAZARDOUS SUBSTANCE which should be handled by trained staff only.

---

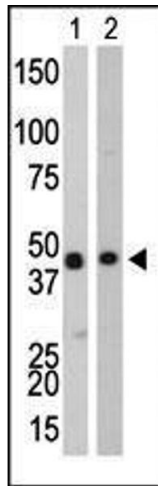
**Storage:** 4 °C,-20 °C

---

**Storage Comment:** Maintain refrigerated at 2-8 °C for up to 6 months. For long term storage store at -20 °C in small aliquots to prevent freeze-thaw cycles.

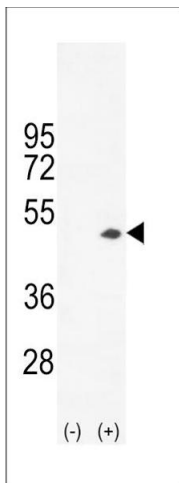
---

**Expiry Date:** 6 months



### Western Blotting

**Image 1.** The anti-CKB Pab (ABIN391074 and ABIN2841221) is used in Western blot to detect CKB in Y79 cell lysate (Lane 1) and mouse colon tissue lysate (Lane 2).



### Western Blotting

**Image 2.** Western blot analysis of CKB (arrow) using rabbit polyclonal CKB- (ABIN391074 and ABIN2841221). 293 cell lysates (2 µg/lane) either nontransfected (Lane 1) or transiently transfected (Lane 2) with the CKB gene.