

Datasheet for ABIN391080
anti-MATK antibody (N-Term)[Go to Product page](#)

1 Image

Overview

Quantity:	400 µL
Target:	MATK
Binding Specificity:	AA 64-94, N-Term
Reactivity:	Human, Mouse
Host:	Rabbit
Clonality:	Polyclonal
Conjugate:	This MATK antibody is un-conjugated
Application:	Western Blotting (WB)

Product Details

Immunogen:	This CHK antibody is generated from rabbits immunized with a KLH conjugated synthetic peptide between 64-94 amino acids from the N-terminal region of human CHK.
Clone:	RB5428
Isotype:	Ig Fraction
Purification:	This antibody is prepared by Saturated Ammonium Sulfate (SAS) precipitation followed by dialysis against PBS.

Target Details

Target:	MATK
Alternative Name:	CHK (MATK Products)

Target Details

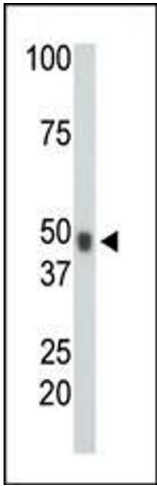
Background:	The dominant pathway for biosynthesis of phosphatidylcholine occurs through the CDP-choline pathway. Choline kinase alpha (CHK) is the first enzyme in the pathway and may thereby play an upstream regulatory role in lipid transport and metabolism. CHK additionally catalyzes phosphorylation of ethanolamine.
Molecular Weight:	52249
Gene ID:	1119
NCBI Accession:	NP_001268 , NP_997634
UniProt:	P35790

Application Details

Application Notes:	WB: 1:1000
Restrictions:	For Research Use only

Handling

Format:	Liquid
Buffer:	Purified polyclonal antibody supplied in PBS with 0.09 % (W/V) sodium azide.
Preservative:	Sodium azide
Precaution of Use:	This product contains Sodium azide: a POISONOUS AND HAZARDOUS SUBSTANCE which should be handled by trained staff only.
Storage:	4 °C, -20 °C
Storage Comment:	Maintain refrigerated at 2-8 °C for up to 6 months. For long term storage store at -20 °C in small aliquots to prevent freeze-thaw cycles.
Expiry Date:	6 months



Western Blotting

Image 1. The anti-CHK Pab (ABIN391080 and ABIN2841225) is used in Western blot to detect CHK in mouse heart tissue lysate.