

Datasheet for ABIN391081

anti-MAP4K2 antibody (AA 288-319)[Go to Product page](#)**2** Images

Overview

Quantity:	400 µL
Target:	MAP4K2
Binding Specificity:	AA 288-319
Reactivity:	Human, Mouse
Host:	Rabbit
Clonality:	Polyclonal
Conjugate:	This MAP4K2 antibody is un-conjugated
Application:	Western Blotting (WB), Immunohistochemistry (Paraffin-embedded Sections) (IHC (p))

Product Details

Immunogen:	This Germinal Center Kinase (GCK/MAP4K2) antibody is generated from rabbits immunized with a KLH conjugated synthetic peptide between 288-319 amino acids from the Central region of human Germinal Center Kinase (GCK/MAP4K2).
Clone:	RB1204
Isotype:	Ig Fraction
Purification:	This antibody is prepared by Saturated Ammonium Sulfate (SAS) precipitation followed by dialysis against PBS.

Target Details

Target:	MAP4K2
Alternative Name:	Germinal Center Kinase (GCK/MAP4K2) (MAP4K2 Products)

Target Details

Background: The protein encoded by this gene is a member of the serine/threonine protein kinase family. Although this kinase is found in many tissues, its expression in lymphoid follicles is restricted to the cells of germinal centre, where it may participate in B-cell differentiation. This kinase can be activated by TNF-alpha, and has been shown to specifically activate MAP kinases. This kinase is also found to interact with TNF receptor-associated factor 2 (TRAF2), which is involved in the activation of MAP3K1/MEKK1.

Molecular Weight: 91556

Gene ID: 5871

NCBI Accession: [NP_004570](#)

UniProt: [Q12851](#)

Application Details

Application Notes: WB: 1:1000. IHC-P: 1:50~100

Restrictions: For Research Use only

Handling

Format: Liquid

Buffer: Purified polyclonal antibody supplied in PBS with 0.09 % (W/V) sodium azide.

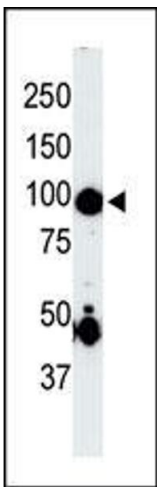
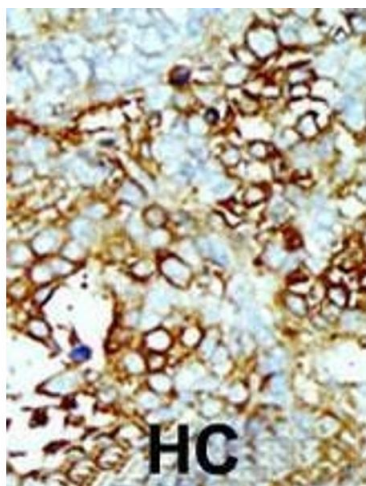
Preservative: Sodium azide

Precaution of Use: This product contains Sodium azide: a POISONOUS AND HAZARDOUS SUBSTANCE which should be handled by trained staff only.

Storage: 4 °C, -20 °C

Storage Comment: Maintain refrigerated at 2-8 °C for up to 6 months. For long term storage store at -20 °C in small aliquots to prevent freeze-thaw cycles.

Expiry Date: 6 months



Immunohistochemistry (Paraffin-embedded Sections)

Image 1. Formalin-fixed and paraffin-embedded human cancer tissue reacted with the primary antibody, which was peroxidase-conjugated to the secondary antibody, followed by AEC staining. This data demonstrates the use of this antibody for immunohistochemistry, clinical relevance has not been evaluated. BC = breast carcinoma, HC = hepatocarcinoma.

Western Blotting

Image 2. The anti-P4K2 Pab (ABIN391081 and ABIN2841226) is used in Western blot to detect P4K2 in mouse skeletal muscle tissue lysate.