



[Go to Product page](#)

Datasheet for ABIN391087

anti-Ethanolamine Kinase 1 antibody (C-Term)

1 Image

Overview

Quantity:	400 µL
Target:	Ethanolamine Kinase 1 (ETNK1)
Binding Specificity:	AA 356-386, C-Term
Reactivity:	Human, Mouse, Hamster
Host:	Rabbit
Clonality:	Polyclonal
Conjugate:	This Ethanolamine Kinase 1 antibody is un-conjugated
Application:	Western Blotting (WB)

Product Details

Immunogen:	This Ethanolamine Kinase (EKI1) antibody is generated from rabbits immunized with a KLH conjugated synthetic peptide between 356-386 amino acids from the C-terminal region of human Ethanolamine Kinase (EKI1).
Clone:	RB5417-5418
Isotype:	Ig Fraction
Purification:	This antibody is prepared by Saturated Ammonium Sulfate (SAS) precipitation followed by dialysis against PBS.

Target Details

Target:	Ethanolamine Kinase 1 (ETNK1)
Alternative Name:	Ethanolamine Kinase (EKI1) (ETNK1 Products)

Target Details

Background: Ethanolamine kinase 1 (EKI1), functions in the first committed step of the phosphatidylethanolamine synthesis pathway. This cytosolic enzyme is specific for ethanolamine and exhibits negligible kinase activity on choline.

Molecular Weight: 50968

Gene ID: 55500

NCBI Accession: [NP_001034570](#), [NP_061108](#)

UniProt: [Q9HBU6](#)

Application Details

Application Notes: WB: 1:1000

Restrictions: For Research Use only

Handling

Format: Liquid

Buffer: Purified polyclonal antibody supplied in PBS with 0.09 % (W/V) sodium azide.

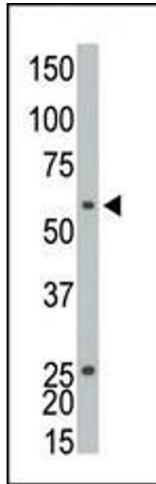
Preservative: Sodium azide

Precaution of Use: This product contains Sodium azide: a POISONOUS AND HAZARDOUS SUBSTANCE which should be handled by trained staff only.

Storage: 4 °C, -20 °C

Storage Comment: Maintain refrigerated at 2-8 °C for up to 6 months. For long term storage store at -20 °C in small aliquots to prevent freeze-thaw cycles.

Expiry Date: 6 months



Western Blotting

Image 1. The anti-EK11 Pab (ABIN391087 and ABIN2841228) is used in Western blot to detect EK11 in CHO cell lysate.