

Datasheet for ABIN391091
anti-CKMT1 antibody (N-Term)[Go to Product page](#)

1 Image

Overview

Quantity:	400 µL
Target:	CKMT1
Binding Specificity:	AA 55-84, N-Term
Reactivity:	Human, Mouse
Host:	Rabbit
Clonality:	Polyclonal
Conjugate:	This CKMT1 antibody is un-conjugated
Application:	Western Blotting (WB)

Product Details

Immunogen:	This CKMT1 antibody is generated from rabbits immunized with a KLH conjugated synthetic peptide between 55-84 amino acids from the N-terminal region of human CKMT1.
Clone:	RB5397-5398
Isotype:	Ig Fraction
Predicted Reactivity:	B, Pig, Rat
Purification:	This antibody is prepared by Saturated Ammonium Sulfate (SAS) precipitation followed by dialysis against PBS.

Target Details

Target:	CKMT1
---------	-------

Target Details

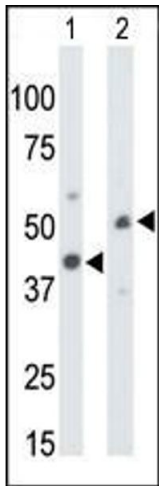
Abstract:	CKMT1 Products
Background:	Mitochondrial creatine kinase (MtCK) is responsible for the transfer of high energy phosphate from mitochondria to the cytosolic carrier, creatine. It belongs to the creatine kinase isoenzyme family. It exists as two isoenzymes, sarcomeric MtCK and ubiquitous MtCK, encoded by separate genes. Mitochondrial creatine kinase occurs in two different oligomeric forms: dimers and octamers, in contrast to the exclusively dimeric cytosolic creatine kinase isoenzymes. Many malignant cancers with poor prognosis have shown overexpression of ubiquitous mitochondrial creatine kinase, this may be related to high energy turnover and failure to eliminate cancer cells via apoptosis. Ubiquitous mitochondrial creatine kinase has 80 % homology with the coding exons of sarcomeric mitochondrial creatine kinase.
Molecular Weight:	47037
Gene ID:	548596
NCBI Accession:	NP_001015001 , NP_066270
UniProt:	P12532

Application Details

Application Notes:	WB: 1:1000
Restrictions:	For Research Use only

Handling

Format:	Liquid
Buffer:	Purified polyclonal antibody supplied in PBS with 0.09 % (W/V) sodium azide.
Preservative:	Sodium azide
Precaution of Use:	This product contains Sodium azide: a POISONOUS AND HAZARDOUS SUBSTANCE which should be handled by trained staff only.
Storage:	4 °C,-20 °C
Storage Comment:	Maintain refrigerated at 2-8 °C for up to 6 months. For long term storage store at -20 °C in small aliquots to prevent freeze-thaw cycles.
Expiry Date:	6 months



Western Blotting

Image 1. The anti-CKMT1 Pab (ABIN391091 and ABIN2841231) is used in Western blot to detect CKMT1 in mouse colon tissue lysate (Lane 1) and ZR-75-1 cell lysate (Lane 2).