

Datasheet for ABIN391093  
**anti-CKMT2 antibody (N-Term)**[Go to Product page](#)

## 1 Image

## Overview

Quantity:	400 µL
Target:	CKMT2
Binding Specificity:	AA 56-86, N-Term
Reactivity:	Human
Host:	Rabbit
Clonality:	Polyclonal
Conjugate:	This CKMT2 antibody is un-conjugated
Application:	Western Blotting (WB)

## Product Details

Immunogen:	This CKMT2 antibody is generated from rabbits immunized with a KLH conjugated synthetic peptide between 56-86 amino acids from the N-terminal region of human CKMT2.
Clone:	RB5383-5384
Isotype:	Ig Fraction
Purification:	This antibody is purified through a protein G column, eluted with high and low pH buffers and neutralized immediately, followed by dialysis against PBS.

## Target Details

Target:	CKMT2
Alternative Name:	CKMT2 ( <a href="#">CKMT2 Products</a> )

## Target Details

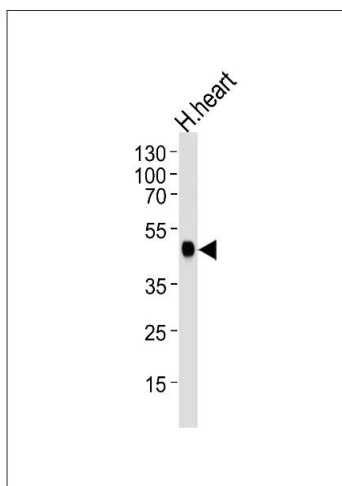
Background:	Mitochondrial creatine kinase (MtCK) is responsible for the transfer of high energy phosphate from mitochondria to the cytosolic carrier, creatine. It belongs to the creatine kinase isoenzyme family. It exists as two isoenzymes, sarcomeric MtCK and ubiquitous MtCK, encoded by separate genes. Mitochondrial creatine kinase occurs in two different oligomeric forms: dimers and octamers, in contrast to the exclusively dimeric cytosolic creatine kinase isoenzymes. Sarcomeric mitochondrial creatine kinase has 80 % homology with the coding exons of ubiquitous mitochondrial creatine kinase. This gene contains sequences homologous to several motifs that are shared among some nuclear genes encoding mitochondrial proteins and thus may be essential for the coordinated activation of these genes during mitochondrial biogenesis.
Molecular Weight:	47504
Gene ID:	1160
NCBI Accession:	<a href="#">NP_001093205</a> , <a href="#">NP_001093206</a> , <a href="#">NP_001816</a>
UniProt:	<a href="#">P17540</a>

## Application Details

Application Notes:	WB: 1:1000
Restrictions:	For Research Use only

## Handling

Format:	Liquid
Buffer:	Purified polyclonal antibody supplied in PBS with 0.09 % (W/V) sodium azide.
Preservative:	Sodium azide
Precaution of Use:	This product contains Sodium azide: a POISONOUS AND HAZARDOUS SUBSTANCE which should be handled by trained staff only.
Storage:	4 °C, -20 °C
Storage Comment:	Maintain refrigerated at 2-8 °C for up to 6 months. For long term storage store at -20 °C in small aliquots to prevent freeze-thaw cycles.
Expiry Date:	6 months



### Western Blotting

**Image 1.** Western blot analysis of lysate from human heart tissue lysate, using CKMT2 Antibody (A71) (ABIN391093 and ABIN2841232). (ABIN391093 and ABIN2841232) was diluted at 1:1000 at each lane. A goat anti-rabbit IgG H&L(HRP) at 1:5000 dilution was used as the secondary antibody. Lysate at 35 µg per lane.