



[Go to Product page](#)

Datasheet for ABIN391094

anti-CKMT2 antibody (C-Term)

1 Image

Overview

Quantity:	400 µL
Target:	CKMT2
Binding Specificity:	AA 391-419, C-Term
Reactivity:	Human
Host:	Rabbit
Clonality:	Polyclonal
Conjugate:	This CKMT2 antibody is un-conjugated
Application:	Western Blotting (WB)

Product Details

Immunogen:	This CKMT2 antibody is generated from rabbits immunized with a KLH conjugated synthetic peptide between 391-419 amino acids from the C-terminal region of human CKMT2.
Clone:	RB5385-5386
Isotype:	Ig Fraction
Purification:	This antibody is prepared by Saturated Ammonium Sulfate (SAS) precipitation followed by dialysis against PBS.

Target Details

Target:	CKMT2
Alternative Name:	CKMT2 (CKMT2 Products)

Target Details

Background: Mitochondrial creatine kinase (MtCK) is responsible for the transfer of high energy phosphate from mitochondria to the cytosolic carrier, creatine. It belongs to the creatine kinase isoenzyme family. It exists as two isoenzymes, sarcomeric MtCK and ubiquitous MtCK, encoded by separate genes. Mitochondrial creatine kinase occurs in two different oligomeric forms: dimers and octamers, in contrast to the exclusively dimeric cytosolic creatine kinase isoenzymes. Sarcomeric mitochondrial creatine kinase has 80 % homology with the coding exons of ubiquitous mitochondrial creatine kinase. This gene contains sequences homologous to several motifs that are shared among some nuclear genes encoding mitochondrial proteins and thus may be essential for the coordinated activation of these genes during mitochondrial biogenesis.

Molecular Weight: 47504

Gene ID: 1160

NCBI Accession: [NP_001093205](#), [NP_001093206](#), [NP_001816](#)

UniProt: [P17540](#)

Application Details

Application Notes: WB: 1:1000

Restrictions: For Research Use only

Handling

Format: Liquid

Buffer: Purified polyclonal antibody supplied in PBS with 0.09 % (W/V) sodium azide.

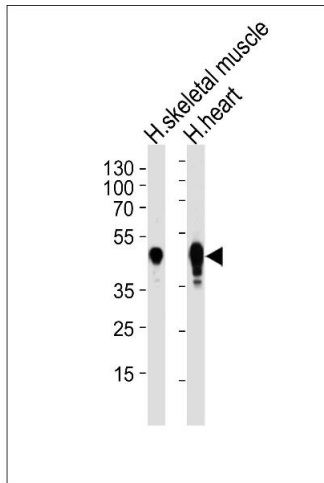
Preservative: Sodium azide

Precaution of Use: This product contains Sodium azide: a POISONOUS AND HAZARDOUS SUBSTANCE which should be handled by trained staff only.

Storage: 4 °C, -20 °C

Storage Comment: Maintain refrigerated at 2-8 °C for up to 6 months. For long term storage store at -20 °C in small aliquots to prevent freeze-thaw cycles.

Expiry Date: 6 months



Western Blotting

Image 1. Western blot analysis of lysates from human skeletal muscle and heart tissue lysates (from left to right), using CKMT2 Antibody (ABIN391094 and ABIN2841233). (ABIN391094 and ABIN2841233) was diluted at 1:1000 at each lane. A goat anti-rabbit IgG H&L(HRP) at 1:5000 dilution was used as the secondary antibody. Lysates at 35 µg per lane.