

Datasheet for ABIN391095
anti-CKM antibody (N-Term)[Go to Product page](#)

2 Images

Overview

Quantity:	400 µL
Target:	CKM
Binding Specificity:	AA 1-30, N-Term
Reactivity:	Human, Mouse
Host:	Rabbit
Clonality:	Polyclonal
Conjugate:	This CKM antibody is un-conjugated
Application:	Western Blotting (WB)

Product Details

Immunogen:	This CKM antibody is generated from rabbits immunized with a KLH conjugated synthetic peptide between 1-30 amino acids from the N-terminal region of human CKM.
Clone:	RB5379
Isotype:	Ig Fraction
Purification:	This antibody is prepared by Saturated Ammonium Sulfate (SAS) precipitation followed by dialysis against PBS.

Target Details

Target:	CKM
Alternative Name:	CKM (CKM Products)

Target Details

Background: Creatine kinase isoenzymes play a central role in energy transduction in tissues with large, fluctuating energy demands, such as skeletal muscle, heart, brain and spermatozoa. The CKM isoform, predominant in skeletal muscle and heart tissue, is a cytoplasmic enzyme involved in energy homeostasis and is an important serum marker for myocardial infarction. CKM reversibly catalyzes the transfer of phosphate between ATP and various phosphogens such as creatine phosphate. It acts as a homodimer in striated muscle as well as in other tissues, and as a heterodimer with a similar brain isozyme in heart. The encoded protein is a member of the ATP:guanido phosphotransferase protein family.

Molecular Weight: 43101

Gene ID: 1158

NCBI Accession: [NP_001815](#)

UniProt: [P06732](#)

Application Details

Application Notes: WB: 1:1000. WB: 1:1000

Restrictions: For Research Use only

Handling

Format: Liquid

Buffer: Purified polyclonal antibody supplied in PBS with 0.09 % (W/V) sodium azide.

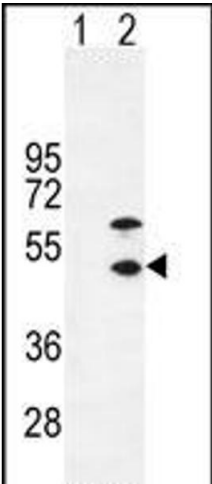
Preservative: Sodium azide

Precaution of Use: This product contains Sodium azide: a POISONOUS AND HAZARDOUS SUBSTANCE which should be handled by trained staff only.

Storage: 4 °C,-20 °C

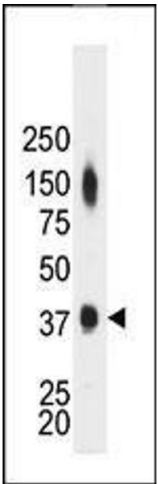
Storage Comment: Maintain refrigerated at 2-8 °C for up to 6 months. For long term storage store at -20 °C in small aliquots to prevent freeze-thaw cycles.

Expiry Date: 6 months



Western Blotting

Image 1. Western blot analysis of CKM (arrow) using rabbit polyclonal CKM-T6 (ABIN391095 and ABIN2841234). 293 cell lysates (2 µg/lane) either nontransfected (Lane 1) or transiently transfected (Lane 2) with the CKM gene.



Western Blotting

Image 2. The anti-CKM Pab (ABIN391095 and ABIN2841234) is used in Western blot to detect CKM in mouse heart tissue lysate.