



[Go to Product page](#)

Datasheet for ABIN391096
anti-CKM antibody (C-Term)

3 Images

1 Publication

Overview

Quantity:	400 µL
Target:	CKM
Binding Specificity:	AA 283-313, C-Term
Reactivity:	Human
Host:	Rabbit
Clonality:	Polyclonal
Conjugate:	This CKM antibody is un-conjugated
Application:	Western Blotting (WB), Immunohistochemistry (Paraffin-embedded Sections) (IHC (p)), Flow Cytometry (FACS)

Product Details

Immunogen:	This CKM antibody is generated from rabbits immunized with a KLH conjugated synthetic peptide between 283-313 amino acids from the C-terminal region of human CKM.
Clone:	RB5382
Isotype:	Ig Fraction
Predicted Reactivity:	B, Pig, Rb
Purification:	This antibody is prepared by Saturated Ammonium Sulfate (SAS) precipitation followed by dialysis against PBS.

Target Details

Target:	CKM
---------	-----

Target Details

Alternative Name: CKM ([CKM Products](#))

Background: Creatine kinase isoenzymes play a central role in energy transduction in tissues with large, fluctuating energy demands, such as skeletal muscle, heart, brain and spermatozoa. The CKM isoform, predominant in skeletal muscle and heart tissue, is a cytoplasmic enzyme involved in energy homeostasis and is an important serum marker for myocardial infarction. CKM reversibly catalyzes the transfer of phosphate between ATP and various phosphogens such as creatine phosphate. It acts as a homodimer in striated muscle as well as in other tissues, and as a heterodimer with a similar brain isozyme in heart. The encoded protein is a member of the ATP:guanido phosphotransferase protein family.

Molecular Weight: 43101

Gene ID: 1158

NCBI Accession: [NP_001815](#)

UniProt: [P06732](#)

Application Details

Application Notes: WB: 1:1000. IHC-P: 1:50~100. FC: 1:10~50

Restrictions: For Research Use only

Handling

Format: Liquid

Buffer: Purified polyclonal antibody supplied in PBS with 0.09 % (W/V) sodium azide.

Preservative: Sodium azide

Precaution of Use: This product contains Sodium azide: a POISONOUS AND HAZARDOUS SUBSTANCE which should be handled by trained staff only.

Storage: 4 °C, -20 °C

Storage Comment: Maintain refrigerated at 2-8 °C for up to 6 months. For long term storage store at -20 °C in small aliquots to prevent freeze-thaw cycles.

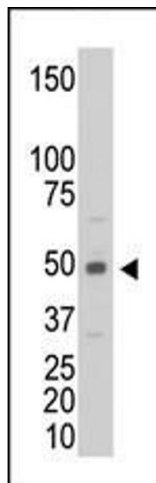
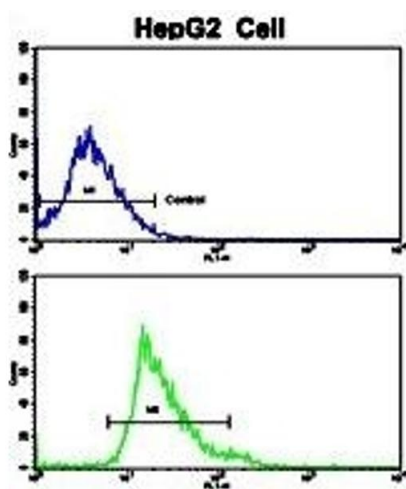
Expiry Date: 6 months

Product cited in:

Lin, Liu, Sun, Yuan, Zhang, Chen: "Establishment and characterization of a tamoxifen-mediated reversible immortalized mouse dental papilla cell line." in: **In vitro cellular & developmental biology. Animal**, Vol. 49, Issue 2, pp. 114-21, (2013) ([PubMed](#)).

Kaushik, Arias, Kwon, Lopez, Athonvarangkul, Sahu, Schwartz, Pessin, Singh: "Loss of autophagy in hypothalamic POMC neurons impairs lipolysis." in: **EMBO reports**, Vol. 13, Issue 3, pp. 258-65, (2012) ([PubMed](#)).

Images

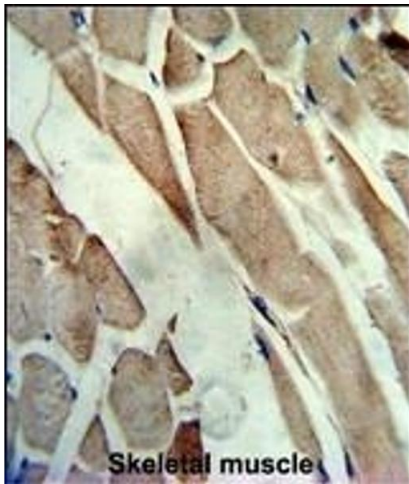


Flow Cytometry

Image 1. Flow cytometric analysis of HepG2 cells using Creatine Kinase MB (CKM) Antibody (C-term)(bottom histogram) compared to a negative control cell (top histogram). FITC-conjugated goat-anti-rabbit secondary antibodies were used for the analysis.

Western Blotting

Image 2. The anti-CKM Pab (ABIN391096 and ABIN2841235) is used in Western blot to detect CKM in C6 cell lysate.



Immunohistochemistry (Paraffin-embedded Sections)

Image 3. Formalin-fixed and paraffin-embedded human skeletal muscle reacted with the primary antibody, which was peroxidase-conjugated to the secondary antibody, followed by AEC staining. This data demonstrates the use of this antibody for immunohistochemistry, clinical relevance has not been evaluated. BC = breast carcinoma, HC = hepatocarcinoma.