



Datasheet for ABIN391136 **anti-NEK8 antibody (N-Term)**



[Go to Product page](#)

1 Image

Overview

Quantity:	400 µL
Target:	NEK8
Binding Specificity:	AA 65-95, N-Term
Reactivity:	Human
Host:	Rabbit
Clonality:	Polyclonal
Conjugate:	This NEK8 antibody is un-conjugated
Application:	Western Blotting (WB)

Product Details

Immunogen:	This NEK8 antibody is generated from rabbits immunized with a KLH conjugated synthetic peptide between 65-95 amino acids from the N-terminal region of human NEK8.
Clone:	RB5456
Isotype:	Ig Fraction
Predicted Reactivity:	M, Rat
Purification:	This antibody is prepared by Saturated Ammonium Sulfate (SAS) precipitation followed by dialysis against PBS.

Target Details

Target:	NEK8
---------	------

Target Details

Alternative Name: [NEK8 \(NEK8 Products\)](#)

Background: NEK8 is a member of the serine/threonine protein kinase family related to NIMA (never in mitosis, gene A) of *Aspergillus nidulans*. The encoded protein may play a role in cell cycle progression from G2 to M phase. Mutations in the related mouse gene are associated with a disease phenotype that closely parallels the juvenile autosomal recessive form of polycystic kidney disease in humans.

Molecular Weight: 74806

Gene ID: 284086

NCBI Accession: [NP_835464](#)

UniProt: [Q86SG6](#)

Application Details

Application Notes: WB: 1:1000

Restrictions: For Research Use only

Handling

Format: Liquid

Buffer: Purified polyclonal antibody supplied in PBS with 0.09 % (W/V) sodium azide.

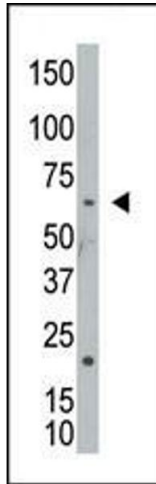
Preservative: Sodium azide

Precaution of Use: This product contains Sodium azide: a POISONOUS AND HAZARDOUS SUBSTANCE which should be handled by trained staff only.

Storage: 4 °C, -20 °C

Storage Comment: Maintain refrigerated at 2-8 °C for up to 6 months. For long term storage store at -20 °C in small aliquots to prevent freeze-thaw cycles.

Expiry Date: 6 months



Western Blotting

Image 1. The anti-NEK8 Pab (ABIN391136 and ABIN2841257) is used in Western blot to detect NEK8 in cell lysate.