

Datasheet for ABIN391162

anti-ACVR2B antibody (AA 1-30)**2** Images**1** Publication[Go to Product page](#)

Overview

Quantity:	400 µL
Target:	ACVR2B
Binding Specificity:	AA 1-30
Reactivity:	Human
Host:	Rabbit
Clonality:	Polyclonal
Conjugate:	This ACVR2B antibody is un-conjugated
Application:	Western Blotting (WB)

Product Details

Immunogen:	This ACVR2B antibody is generated from rabbits immunized with a KLH conjugated synthetic peptide selected between aa 1 and 30 of human ACVR2B.
Clone:	RB08166
Isotype:	Ig Fraction
Purification:	This antibody is prepared by Saturated Ammonium Sulfate (SAS) precipitation followed by dialysis against PBS.

Target Details

Target:	ACVR2B
Alternative Name:	ACVR2B (ACVR2B Products)

Target Details

Background:	Activins are dimeric growth and differentiation factors which belong to the transforming growth factor-beta (TGF-beta) superfamily of structurally related signaling proteins. Activins signal through a heteromeric complex of receptor serine kinases which include at least two type I (I and IB) and two type II (II and IIB) receptors. These receptors are all transmembrane proteins, composed of a ligand-binding extracellular domain with cysteine-rich region, a transmembrane domain, and a cytoplasmic domain with predicted serine/threonine specificity. Type I receptors are essential for signaling, and type II receptors are required for binding ligands and for expression of type I receptors. Type I and II receptors form a stable complex after ligand binding, resulting in phosphorylation of type I receptors by type II receptors. Type II receptors are considered to be constitutively active kinases. ACVR2B (activin A type IIB receptor) displays a 3- to 4-fold higher affinity for the ligand than activin A type II receptor.
Molecular Weight:	57724
Gene ID:	93
NCBI Accession:	NP_001097
UniProt:	Q13705
Pathways:	Hormone Transport , Cancer Immune Checkpoints

Application Details

Application Notes:	WB: 1:1000. WB: 1:1000
Restrictions:	For Research Use only

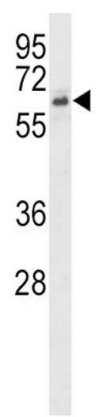
Handling

Format:	Liquid
Buffer:	Purified polyclonal antibody supplied in PBS with 0.09 % (W/V) sodium azide.
Preservative:	Sodium azide
Precaution of Use:	This product contains Sodium azide: a POISONOUS AND HAZARDOUS SUBSTANCE which should be handled by trained staff only.
Storage:	4 °C, -20 °C
Storage Comment:	Maintain refrigerated at 2-8 °C for up to 6 months. For long term storage store at -20 °C in small aliquots to prevent freeze-thaw cycles.
Expiry Date:	6 months

Product cited in: Lin, Liu, Sun, Yuan, Zhang, Chen: "Establishment and characterization of a tamoxifen-mediated reversible immortalized mouse dental papilla cell line." in: **In vitro cellular & developmental biology. Animal**, Vol. 49, Issue 2, pp. 114-21, (2013) ([PubMed](#)).

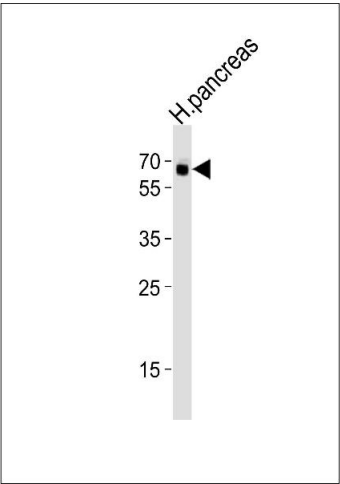
Kaushik, Arias, Kwon, Lopez, Athonvarangkul, Sahu, Schwartz, Pessin, Singh: "Loss of autophagy in hypothalamic POMC neurons impairs lipolysis." in: **EMBO reports**, Vol. 13, Issue 3, pp. 258-65, (2012) ([PubMed](#)).

Images



Western Blotting

Image 1. Western blot analysis of ACVR2B (N-term) (ABIN391162 and ABIN2841269) in Jurkat cell line lysates (35 µg/lane). ACVR2B (arrow) was detected using the purified Pab.



Western Blotting

Image 2. Western blot analysis of lysate from human pancreas tissue lysate, using ACVR2B Antibody (S14) A. A was diluted at 1:1000. A goat anti-rabbit IgG H&L(HRP) at 1:10000 dilution was used as the secondary antibody. Lysate at 35 µg.