

Datasheet for ABIN391172

anti-STRADB antibody (C-Term)[Go to Product page](#)**1** Image

Overview

Quantity:	400 µL
Target:	STRADB
Binding Specificity:	AA 274-303, C-Term
Reactivity:	Human
Host:	Rabbit
Clonality:	Polyclonal
Conjugate:	This STRADB antibody is un-conjugated
Application:	Western Blotting (WB)

Product Details

Immunogen:	This ALS2CR2 antibody is generated from rabbits immunized with a KLH conjugated synthetic peptide between 274-303 amino acids from the C-terminal region of human ALS2CR2.
Clone:	RB15723
Isotype:	Ig Fraction
Purification:	This antibody is prepared by Saturated Ammonium Sulfate (SAS) precipitation followed by dialysis against PBS.

Target Details

Target:	STRADB
Alternative Name:	ALS2CR2 (STRADB Products)

Target Details

Background: ALS2CR2 potentiates the antiapoptotic activity of XIAP by enhancing XIAP-mediated activation of JNK1 (MAPK8) and other JNK family members, but not by modulating XIAP-mediated caspase inhibition. Expression of a catalytically inactive TAK1 (MAP3K7) mutant blocks the XIAP/ALS2CR2 activation of JNK1. In vivo coprecipitation experiments show that both ALS2CR2 and XIAP interact with TAK1 and TRAF6. It has been proposed that XIAP-mediated protection from apoptosis utilizes both a JNK1 activation pathway that involves ALS2CR2 and a caspase inhibition pathway that is independent of ALS2CR2.

Molecular Weight: 47026

Gene ID: 55437

NCBI Accession: [NP_001193793](#), [NP_061041](#)

UniProt: [Q9C0K7](#)

Pathways: [AMPK Signaling](#)

Application Details

Application Notes: WB: 1:1000

Restrictions: For Research Use only

Handling

Format: Liquid

Buffer: Purified polyclonal antibody supplied in PBS with 0.09 % (W/V) sodium azide.

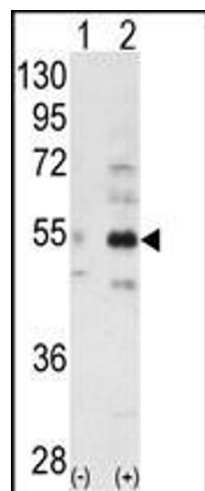
Preservative: Sodium azide

Precaution of Use: This product contains Sodium azide: a POISONOUS AND HAZARDOUS SUBSTANCE which should be handled by trained staff only.

Storage: 4 °C,-20 °C

Storage Comment: Maintain refrigerated at 2-8 °C for up to 6 months. For long term storage store at -20 °C in small aliquots to prevent freeze-thaw cycles.

Expiry Date: 6 months



Western Blotting

Image 1. Western blot analysis of ALS2CR2 (arrow) using ALS2CR2 Antibody (C-term) (ABIN391172 and ABIN2841272). 293 cell lysates (2 µg/lane) either nontransfected (Lane 1) or transiently transfected with the ALS2CR2 gene (Lane 2) (Origene Technologies).