

Datasheet for ABIN391176
anti-BCKDK antibody (AA 120-151)

2 Images

[Go to Product page](#)

Overview

Quantity:	400 µL
Target:	BCKDK
Binding Specificity:	AA 120-151
Reactivity:	Human
Host:	Rabbit
Clonality:	Polyclonal
Conjugate:	This BCKDK antibody is un-conjugated
Application:	Western Blotting (WB), Immunohistochemistry (Paraffin-embedded Sections) (IHC (p))

Product Details

Immunogen:	This BCKDK antibody is generated from rabbits immunized with a KLH conjugated synthetic peptide between 120-151 amino acids from the Central region of human BCKDK.
Clone:	RB7751
Isotype:	Ig Fraction
Predicted Reactivity:	M, Rat
Purification:	This antibody is prepared by Saturated Ammonium Sulfate (SAS) precipitation followed by dialysis against PBS.

Target Details

Target:	BCKDK
---------	-------

Target Details

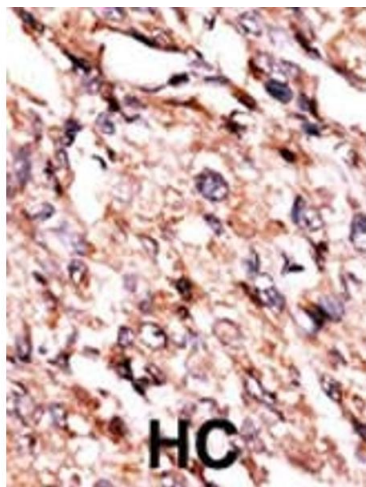
Alternative Name:	BCKDK (BCKDK Products)
Background:	The second major step in the catabolism of the branched-chain amino acids, isoleucine, leucine, and valine, is irreversibly catalyzed by the branched-chain alpha-keto acid dehydrogenase complex (BCKD), an inner-mitochondrial enzyme complex composed of 3 catalytic components: a branched-chain alpha-keto acid decarboxylase (E1), a dihydrolipoyl transacylase (E2), and a dihydrolipoamide dehydrogenase (E3). The complex also contains 2 enzymes that regulated the state of activity of the BCKD complex: a kinase (BCKDK), and a phosphorylase. The ubiquitously expressed kinase contains 1 histidine kinase domain. Maple syrup urine disease (MSUD) is a pathology secondary to an enzyme defect in the catabolic pathway of leucine, isoleucine, and valine. Accumulation of these amino acids and their corresponding keto acids results in encephalopathy and progressive neurodegeneration in infants not treated for MSUD.
Molecular Weight:	46360
Gene ID:	10295
NCBI Accession:	NP_001116429 , NP_005872
UniProt:	O14874
Pathways:	SARS-CoV-2 Protein Interactome

Application Details

Application Notes:	WB: 1:1000. IHC-P: 1:50~100
Restrictions:	For Research Use only

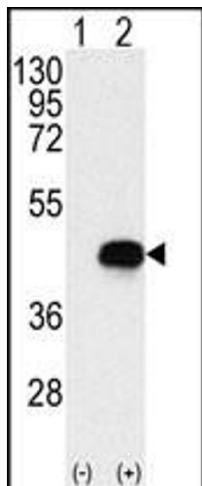
Handling

Format:	Liquid
Buffer:	Purified polyclonal antibody supplied in PBS with 0.09 % (W/V) sodium azide.
Preservative:	Sodium azide
Precaution of Use:	This product contains Sodium azide: a POISONOUS AND HAZARDOUS SUBSTANCE which should be handled by trained staff only.
Storage:	4 °C,-20 °C
Storage Comment:	Maintain refrigerated at 2-8 °C for up to 6 months. For long term storage store at -20 °C in small aliquots to prevent freeze-thaw cycles.



Immunohistochemistry (Paraffin-embedded Sections)

Image 1. Formalin-fixed and paraffin-embedded human cancer tissue reacted with the primary antibody, which was peroxidase-conjugated to the secondary antibody, followed by AEC staining. This data demonstrates the use of this antibody for immunohistochemistry, clinical relevance has not been evaluated. BC = breast carcinoma, HC = hepatocarcinoma.



Western Blotting

Image 2. Western blot analysis of BCKDK (arrow) using rabbit polyclonal BCKDK Antibody (Center) (ABIN391176 and ABIN2841276). 293 cell lysates (2 µg/lane) either nontransfected (Lane 1) or transiently transfected with the BCKDK gene (Lane 2) (Origene Technologies).