

Datasheet for ABIN391182

anti-CAMKK2 antibody (N-Term)[Go to Product page](#)**2** Images

Overview

Quantity:	400 µL
Target:	CAMKK2
Binding Specificity:	AA 52-82, N-Term
Reactivity:	Human
Host:	Rabbit
Clonality:	Polyclonal
Conjugate:	This CAMKK2 antibody is un-conjugated
Application:	Western Blotting (WB), Immunohistochemistry (Paraffin-embedded Sections) (IHC (p))

Product Details

Immunogen:	This CAMKK2 antibody is generated from rabbits immunized with a KLH conjugated synthetic peptide between 52-82 amino acids from the N-terminal region of human CAMKK2.
Clone:	RB13060
Isotype:	Ig Fraction
Purification:	This antibody is prepared by Saturated Ammonium Sulfate (SAS) precipitation followed by dialysis against PBS.

Target Details

Target:	CAMKK2
Alternative Name:	CAMKK2 (CAMKK2 Products)

Target Details

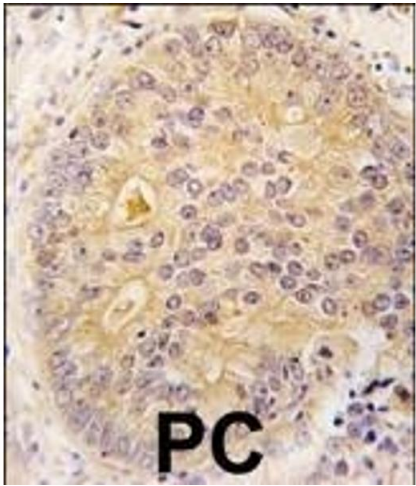
Background:	CAMKK2 belongs to the Serine/Threonine protein kinase family, and to the Ca(2+)/calmodulin-dependent protein kinase subfamily. This protein plays a role in the calcium/calmodulin-dependent (CaM) kinase cascade by phosphorylating the downstream kinases CaMK1 and CaMK4. Isoform 1, isoform 2 and isoform 3 phosphorylate CAMK1 and CAMK4. Isoform 3 phosphorylates CAMK1D. Isoform 4, isoform 5 and isoform 6 lacking part of the calmodulin-binding domain are inactive. CAMKK2 appears to be involved in hippocampal activation of CREB1.
Molecular Weight:	64746
Gene ID:	10645
NCBI Accession:	NP_001257414 , NP_001257415 , NP_006540 , NP_705719 , NP_705720 , NP_757363 , NP_757364 , NP_757365 , NP_757380
UniProt:	Q96RR4
Pathways:	AMPK Signaling

Application Details

Application Notes:	WB: 1:1000. IHC-P: 1:10~50
Restrictions:	For Research Use only

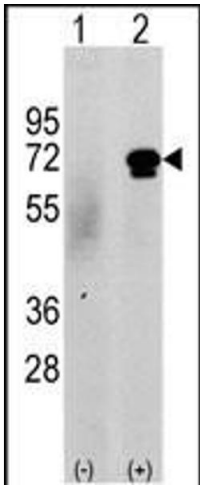
Handling

Format:	Liquid
Buffer:	Purified polyclonal antibody supplied in PBS with 0.09 % (W/V) sodium azide.
Preservative:	Sodium azide
Precaution of Use:	This product contains Sodium azide: a POISONOUS AND HAZARDOUS SUBSTANCE which should be handled by trained staff only.
Storage:	4 °C, -20 °C
Storage Comment:	Maintain refrigerated at 2-8 °C for up to 6 months. For long term storage store at -20 °C in small aliquots to prevent freeze-thaw cycles.
Expiry Date:	6 months



Immunohistochemistry (Paraffin-embedded Sections)

Image 1. Formalin-fixed and paraffin-embedded human prostata carcinoma tissue reacted with CKK2 antibody (N-term) (ABIN391182 and ABIN2841279) , which was peroxidase-conjugated to the secondary antibody, followed by DAB staining. This data demonstrates the use of this antibody for immunohistochemistry, clinical relevance has not been evaluated.



Western Blotting

Image 2. Western blot analysis of CKK2 (arrow) using rabbit polyclonal CKK2 Antibody (N-term G67) (ABIN391182 and ABIN2841279). 293 cell lysates (2 µg/lane) either nontransfected (c) or transiently transfected with the CKK2 gene (Lane 2) (Origene Technologies).