

Datasheet for ABIN391186  
**anti-CCRK antibody (N-Term)**[Go to Product page](#)

## 1 Image

## Overview

|                      |                                     |
|----------------------|-------------------------------------|
| Quantity:            | 400 µL                              |
| Target:              | CCRK (CDK20)                        |
| Binding Specificity: | AA 16-45, N-Term                    |
| Reactivity:          | Human                               |
| Host:                | Rabbit                              |
| Clonality:           | Polyclonal                          |
| Conjugate:           | This CCRK antibody is un-conjugated |
| Application:         | Western Blotting (WB)               |

## Product Details

|               |  |
|---------------|--|
| Immunogen:    | This CCRK antibody is generated from rabbits immunized with a KLH conjugated synthetic peptide between 16-45 amino acids from the N-terminal region of human CCRK. |
| Clone:        | RB8503   |
| Isotype:      | Ig Fraction  |
| Purification: | This antibody is prepared by Saturated Ammonium Sulfate (SAS) precipitation followed by dialysis against PBS.  |

## Target Details

|                   |   |
|-------------------|---|
| Target:           | CCRK (CDK20)                            |
| Alternative Name: | CCRK ( <a href="#">CDK20 Products</a> ) |

## Target Details

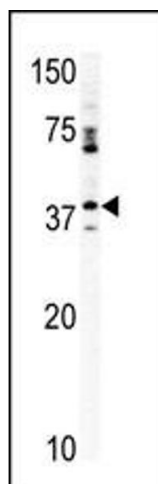
|                   |  |
|-------------------|--|
| Background:       | CCRK contains a kinase domain most closely related to the cyclin-dependent protein kinases.<br>This protein is involved in cell growth and activates CDK2, a kinase involved in the control of the cell cycle, by phosphorylating residue Thr-160. |
| Molecular Weight: | 38695  |
| Gene ID:          | 23552  |
| NCBI Accession:   | <a href="#">NP_001034892</a> , <a href="#">NP_001164110</a> , <a href="#">NP_001164111</a> , <a href="#">NP_036251</a> , <a href="#">NP_848519</a>   |
| UniProt:          | <a href="#">Q8IZL9</a>   |

## Application Details

|                    |                       |
|--------------------|-----------------------|
| Application Notes: | WB: 1:1000            |
| Restrictions:      | For Research Use only |

## Handling

|                    |  |
|--------------------|--|
| Format:            | Liquid   |
| Buffer:            | Purified polyclonal antibody supplied in PBS with 0.09 % (W/V) sodium azide.   |
| Preservative:      | Sodium azide   |
| Precaution of Use: | This product contains Sodium azide: a POISONOUS AND HAZARDOUS SUBSTANCE which should be handled by trained staff only.                     |
| Storage:           | 4 °C, -20 °C   |
| Storage Comment:   | Maintain refrigerated at 2-8 °C for up to 6 months. For long term storage store at -20 °C in small aliquots to prevent freeze-thaw cycles. |
| Expiry Date:       | 6 months   |



#### Western Blotting

**Image 1.** Western blot analysis of anti-CCRK Pab (ABIN391186 and ABIN2841280) in mouse kidney tissue lysate (35 µg/lane). CCRK(arrow) was detected using the purified Pab.