

Datasheet for ABIN391194  
**anti-ERN2 antibody (N-Term)**[Go to Product page](#)

## 1 Image

## Overview

Quantity:	400 µL
Target:	ERN2
Binding Specificity:	AA 39-72, N-Term
Reactivity:	Human
Host:	Rabbit
Clonality:	Polyclonal
Conjugate:	This ERN2 antibody is un-conjugated
Application:	Western Blotting (WB)

## Product Details

Immunogen:	This ERN2 antibody is generated from rabbits immunized with a KLH conjugated synthetic peptide between 39-72 amino acids from the N-terminal region of human ERN2.
Clone:	RB8519
Isotype:	Ig Fraction
Purification:	This antibody is prepared by Saturated Ammonium Sulfate (SAS) precipitation followed by dialysis against PBS.

## Target Details

Target:	ERN2
Alternative Name:	ERN2 ( <a href="#">ERN2 Products</a> )

## Target Details

**Background:** ERN2 induces translational repression through 28S ribosomal RNA cleavage in response to endoplasmic reticulum (ER) stress. This pro-apoptotic appears to play no role in the unfolded-protein response, unlike closely related proteins. Overexpression of ERN2 activates both BiP and CHOP expression, and also leads to the development of programmed cell death. It has been suggested that Ern2 plays a role in multiple facets of the ER stress response in mammalian cells.

**Molecular Weight:** 102480

**Gene ID:** 10595

**NCBI Accession:** [NP\\_150296](#)

**UniProt:** [Q76MJ5](#)

## Application Details

**Application Notes:** WB: 1:1000. WB: 1:1000

**Restrictions:** For Research Use only

## Handling

**Format:** Liquid

**Buffer:** Purified polyclonal antibody supplied in PBS with 0.09 % (W/V) sodium azide.

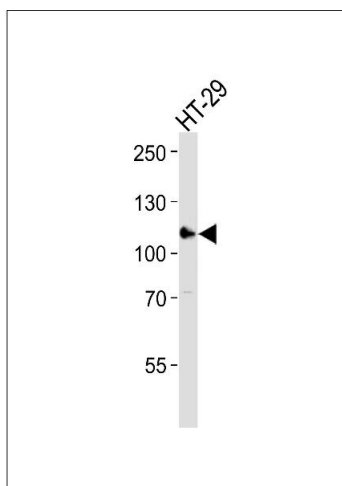
**Preservative:** Sodium azide

**Precaution of Use:** This product contains Sodium azide: a POISONOUS AND HAZARDOUS SUBSTANCE which should be handled by trained staff only.

**Storage:** 4 °C, -20 °C

**Storage Comment:** Maintain refrigerated at 2-8 °C for up to 6 months. For long term storage store at -20 °C in small aliquots to prevent freeze-thaw cycles.

**Expiry Date:** 6 months



### Western Blotting

**Image 1.** Western blot analysis of lysate from HT-29 cell line, using ERN2 Antibody (N-term) (ABIN391194 and ABIN2841282). (ABIN391194 and ABIN2841282) was diluted at 1:1000. A goat anti-rabbit IgG H&L(HRP) at 1:10000 dilution was used as the secondary antibody. Lysate at 35 µg.