

Datasheet for ABIN391197
anti-GCN2 antibody (N-Term)[Go to Product page](#)

2 Images

2 Publications

Overview

Quantity:	400 µL
Target:	GCN2 (EIF2AK4)
Binding Specificity:	AA 1-30, N-Term
Reactivity:	Human
Host:	Rabbit
Clonality:	Polyclonal
Conjugate:	This GCN2 antibody is un-conjugated
Application:	Western Blotting (WB), Immunohistochemistry (Paraffin-embedded Sections) (IHC (p))

Product Details

Immunogen:	This GCN2 antibody is generated from rabbits immunized with a KLH conjugated synthetic peptide between 1-30 amino acids from the N-terminal region of human GCN2.
Clone:	RB8239
Isotype:	Ig Fraction
Purification:	This antibody is prepared by Saturated Ammonium Sulfate (SAS) precipitation followed by dialysis against PBS.

Target Details

Target:	GCN2 (EIF2AK4)
Alternative Name:	GCN2 (EIF2AK4 Products)

Target Details

Background:	GCN2 (EIF2AK4) belongs to a family of kinases that phosphorylate the alpha subunit of eukaryotic translation initiation factor-2 to downregulate protein synthesis in response to varied cellular stresses.
Molecular Weight:	186911
Gene ID:	440275
NCBI Accession:	NP_001013725
UniProt:	Q9P2K8
Pathways:	ER-Nucleus Signaling , Hepatitis C

Application Details

Application Notes:	WB: 1:1000. IHC-P: 1:50~100
Restrictions:	For Research Use only

Handling

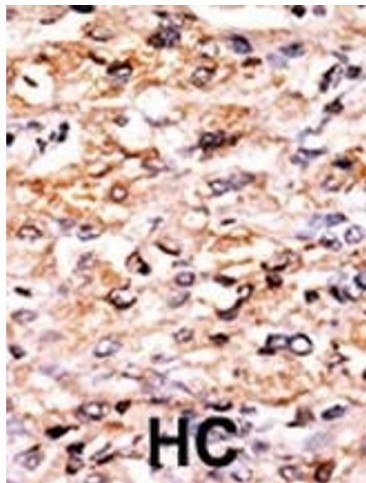
Format:	Liquid
Buffer:	Purified polyclonal antibody supplied in PBS with 0.09 % (W/V) sodium azide.
Preservative:	Sodium azide
Precaution of Use:	This product contains Sodium azide: a POISONOUS AND HAZARDOUS SUBSTANCE which should be handled by trained staff only.
Storage:	4 °C,-20 °C
Storage Comment:	Maintain refrigerated at 2-8 °C for up to 6 months. For long term storage store at -20 °C in small aliquots to prevent freeze-thaw cycles.
Expiry Date:	6 months

Publications

Product cited in: Lin, Liu, Sun, Yuan, Zhang, Chen: "Establishment and characterization of a tamoxifen-mediated reversible immortalized mouse dental papilla cell line." in: **In vitro cellular & developmental biology. Animal**, Vol. 49, Issue 2, pp. 114-21, (2013) ([PubMed](#)).

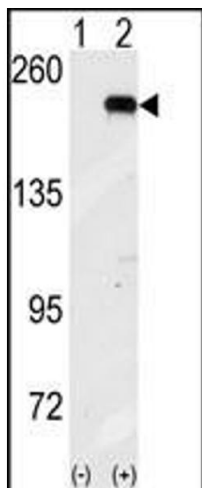
Kaushik, Arias, Kwon, Lopez, Athonvarangkul, Sahu, Schwartz, Pessin, Singh: "Loss of

autophagy in hypothalamic POMC neurons impairs lipolysis." in: **EMBO reports**, Vol. 13, Issue 3, pp. 258-65, (2012) ([PubMed](#)).



Immunohistochemistry (Paraffin-embedded Sections)

Image 1. Formalin-fixed and paraffin-embedded human cancer tissue reacted with the primary antibody, which was peroxidase-conjugated to the secondary antibody, followed by AEC staining. This data demonstrates the use of this antibody for immunohistochemistry, clinical relevance has not been evaluated. BC = breast carcinoma, HC = hepatocarcinoma.



Western Blotting

Image 2. Western blot analysis of GCN2 (arrow) using GCN2 Antibody (N-term G11) (ABIN391197 and ABIN2841284). 293 cell lysates (2 µg/lane) either nontransfected (Lane 1) or transiently transfected with the GCN2 gene (Lane 2) (Origene Technologies).