



[Go to Product page](#)

Datasheet for ABIN391201

anti-GUCY1A1 antibody (N-Term)

3 Images

1 Publication

Overview

Quantity:	400 µL
Target:	GUCY1A1
Binding Specificity:	AA 269-300, N-Term
Reactivity:	Human
Host:	Rabbit
Clonality:	Polyclonal
Conjugate:	This GUCY1A1 antibody is un-conjugated
Application:	Western Blotting (WB), Immunohistochemistry (Paraffin-embedded Sections) (IHC (p))

Product Details

Immunogen:	This Guanylyl Cyclase alpha 1 (GUCY1A3) antibody is generated from rabbits immunized with a KLH conjugated synthetic peptide between 269-300 amino acids from the N-terminal region of human Guanylyl Cyclase alpha 1 (GUCY1A3).
Clone:	RB07757
Isotype:	Ig Fraction
Purification:	This antibody is prepared by Saturated Ammonium Sulfate (SAS) precipitation followed by dialysis against PBS.

Target Details

Target:	GUCY1A1
Alternative Name:	Guanylyl Cyclase alpha 1 (GUCY1A3) (GUCY1A1 Products)

Target Details

Background:	Soluble guanylate cyclase (sGC), a heterodimeric protein consisting of an alpha and a beta subunit, catalyzes the conversion of GTP to the second messenger cGMP and functions as the main receptor for nitric oxide and nitrovasodilator drugs.
Molecular Weight:	77452
Gene ID:	2982
NCBI Accession:	NP_000847 , NP_001124154 , NP_001124155 , NP_001124156 , NP_001124159 , NP_001243378
UniProt:	Q02108
Pathways:	Myometrial Relaxation and Contraction

Application Details

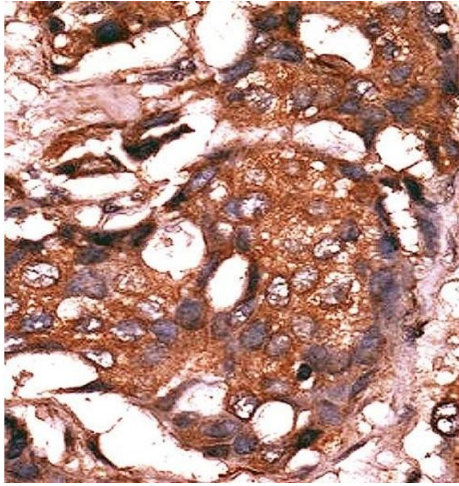
Application Notes:	WB: 1:1000. WB: 1:1000. IHC-P: 1:10~50
Restrictions:	For Research Use only

Handling

Format:	Liquid
Buffer:	Purified polyclonal antibody supplied in PBS with 0.09 % (W/V) sodium azide.
Preservative:	Sodium azide
Precaution of Use:	This product contains Sodium azide: a POISONOUS AND HAZARDOUS SUBSTANCE which should be handled by trained staff only.
Storage:	4 °C,-20 °C
Storage Comment:	Maintain refrigerated at 2-8 °C for up to 6 months. For long term storage store at -20 °C in small aliquots to prevent freeze-thaw cycles.
Expiry Date:	6 months

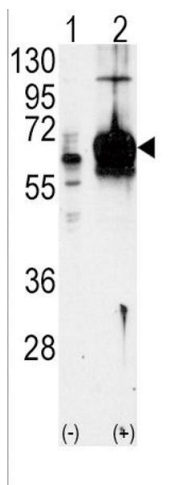
Publications

Product cited in:	Hedlund, Karlsson, Osborn, Ludwig, Isacson: "Global gene expression profiling of somatic motor neuron populations with different vulnerability identify molecules and pathways of degeneration and protection." in: Brain : a journal of neurology , Vol. 133, Issue Pt 8, pp. 2313-30, (2010) (PubMed).
-------------------	---



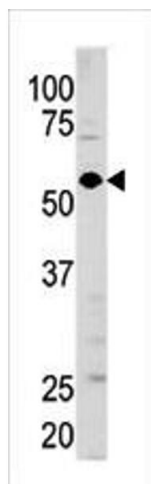
Immunohistochemistry (Paraffin-embedded Sections)

Image 1. Formalin-fixed and paraffin-embedded human cancer tissue reacted with the primary antibody, which was peroxidase-conjugated to the secondary antibody, followed by AEC staining. This data demonstrates the use of this antibody for immunohistochemistry, clinical relevance has not been evaluated. BC = breast carcinoma, HC = hepatocarcinoma.



Western Blotting

Image 2. Western blot analysis of GUCY1A3 (arrow) using GUCY1A3 Antibody (N-term) (ABIN391201 and ABIN2841286). 293 cell lysates (2 µg/lane) either nontransfected (Lane 1) or transiently transfected with the GUCY1A3 gene (Lane 2) (Origene Technologies).



Western Blotting

Image 3. Western blot analysis of anti-GUCY1A3 Pab (ABIN391201 and ABIN2841286) in mouse brain tissue lysate (35 µg/lane). GUCY1A3(arrow) was detected using the purified Pab.