

Datasheet for ABIN391210
anti-LMTK2 antibody (AA 668-697)[Go to Product page](#)

1 Image

Overview

Quantity:	400 µL
Target:	LMTK2
Binding Specificity:	AA 668-697
Reactivity:	Human
Host:	Rabbit
Clonality:	Polyclonal
Conjugate:	This LMTK2 antibody is un-conjugated
Application:	Western Blotting (WB)

Product Details

Immunogen:	This LMTK2 antibody is generated from rabbits immunized with a KLH conjugated synthetic peptide between 668-697 amino acids from the Central region of human LMTK2.
Clone:	RB12581
Isotype:	Ig Fraction
Purification:	This antibody is prepared by Saturated Ammonium Sulfate (SAS) precipitation followed by dialysis against PBS.

Target Details

Target:	LMTK2
Alternative Name:	LMTK2 (LMTK2 Products)

Target Details

Background:	Protein kinases are enzymes that transfer a phosphate group from a phosphate donor, generally the γ phosphate of ATP, onto an acceptor amino acid in a substrate protein. By this basic mechanism, protein kinases mediate most of the signal transduction in eukaryotic cells, regulating cellular metabolism, transcription, cell cycle progression, cytoskeletal rearrangement and cell movement, apoptosis, and differentiation. With more than 500 gene products, the protein kinase family is one of the largest families of proteins in eukaryotes. The family has been classified in 8 major groups based on sequence comparison of their tyrosine (PTK) or serine/threonine (STK) kinase catalytic domains. The tyrosine kinase (TK) group is mainly involved in the regulation of cell-cell interactions such as differentiation, adhesion, motility and death. There are currently about 90 TK genes sequenced, 58 are of receptor protein TK (e.g. EGFR, EPH, FGFR, PDGFR, TRK, and VEGFR families), and 32 of cytosolic TK (e.g. ABL, FAK, JAK, and SRC families).
Molecular Weight:	164900
Gene ID:	22853
NCBI Accession:	NP_055731
UniProt:	Q8IWU2
Pathways:	RTK Signaling , Neurotrophin Signaling Pathway

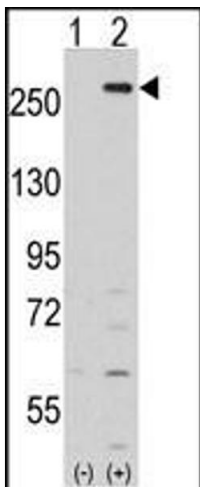
Application Details

Application Notes:	WB: 1:1000
Restrictions:	For Research Use only

Handling

Format:	Liquid
Buffer:	Purified polyclonal antibody supplied in PBS with 0.09 % (W/V) sodium azide.
Preservative:	Sodium azide
Precaution of Use:	This product contains Sodium azide: a POISONOUS AND HAZARDOUS SUBSTANCE which should be handled by trained staff only.
Storage:	4 °C, -20 °C
Storage Comment:	Maintain refrigerated at 2-8 °C for up to 6 months. For long term storage store at -20 °C in small aliquots to prevent freeze-thaw cycles.

Expiry Date: 6 months



Western Blotting

Image 1. Western blot analysis of LMTK2 (arrow) using rabbit polyclonal LMTK2 Antibody (Center) (ABIN391210 and ABIN2841289). 293 cell lysates (2 µg/lane) either nontransfected (Lane 1) or transiently transfected with the LMTK2 gene (Lane 2) (Origene Technologies).