

Datasheet for ABIN391217  
**anti-STRADA antibody (N-Term)**

## 5 Images

[Go to Product page](#)

## Overview

Quantity:	400 µL
Target:	STRADA
Binding Specificity:	AA 12-41, N-Term
Reactivity:	Human
Host:	Rabbit
Clonality:	Polyclonal
Conjugate:	This STRADA antibody is un-conjugated
Application:	Western Blotting (WB), Immunofluorescence (IF), Flow Cytometry (FACS)

## Product Details

Immunogen:	This LYK5 antibody is generated from rabbits immunized with a KLH conjugated synthetic peptide between 12-41 amino acids from the N-terminal region of human LYK5.
Clone:	RB8539
Isotype:	Ig Fraction
Predicted Reactivity:	M
Purification:	This antibody is purified through a protein A column, followed by peptide affinity purification.

## Target Details

Target:	STRADA
Alternative Name:	LYK5 ( <a href="#">STRADA Products</a> )

## Target Details

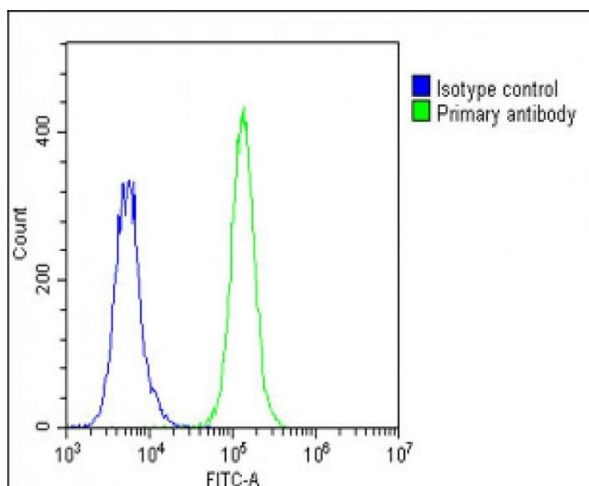
Background:	LYK5, also STE20-related Adaptor Protein (STRAD) are members of STE-20 like kinase family that are known to stimulate MAPK pathways by directly activating MAPKKK. LYK5 is a novel pseudokinase member of this family consisting of a STE-20 like kinase domain but lacks several residues that are required for its catalytic activity. It specifically binds LKB1 and plays a key role in regulating tumor suppressor activities of LKB1. It functions as an upstream activator of LKB1 and also directs the sub-cellular localization of LKB1 by anchoring it in the cytoplasm. STRAD-LKB1 interaction results in phosphorylation of STRAD and enhanced autophosphorylation of LKB1.
Molecular Weight:	48369
Gene ID:	92335
NCBI Accession:	<a href="#">NP_001003786</a> , <a href="#">NP_001003787</a> , <a href="#">NP_001003788</a> , <a href="#">NP_001159441</a> , <a href="#">NP_001159442</a> , <a href="#">NP_699166</a>
UniProt:	<a href="#">Q7RTN6</a>
Pathways:	<a href="#">AMPK Signaling</a>

## Application Details

Application Notes:	IF: 1:25. WB: 1:1000. WB: 1:1000. WB: 1:2000. FC: 1:25
Restrictions:	For Research Use only

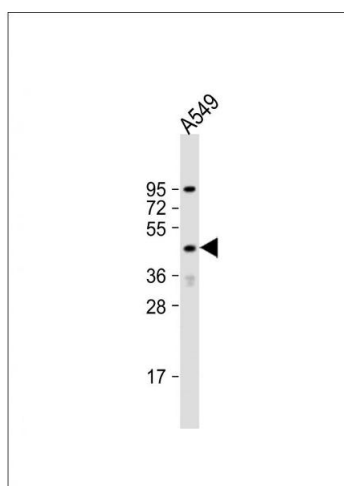
## Handling

Format:	Liquid
Buffer:	Purified polyclonal antibody supplied in PBS with 0.09 % (W/V) sodium azide.
Preservative:	Sodium azide
Precaution of Use:	This product contains Sodium azide: a POISONOUS AND HAZARDOUS SUBSTANCE which should be handled by trained staff only.
Storage:	4 °C, -20 °C
Storage Comment:	Maintain refrigerated at 2-8 °C for up to 6 months. For long term storage store at -20 °C in small aliquots to prevent freeze-thaw cycles.
Expiry Date:	6 months



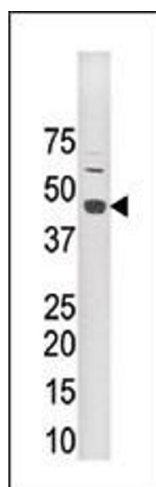
### Flow Cytometry

**Image 1.** Overlay histogram showing A549 cells stained with A (green line). The cells were fixed with 2 % paraformaldehyde (10 min) and then permeabilized with 90 % methanol for 10 min. The cells were then incubated in 2 % bovine serum albumin to block non-specific protein-protein interactions followed by the antibody (A, 1:25 dilution) for 60 min at 37 °C. The secondary antibody used was Goat-Anti-Rabbit IgG, DyLight® 488 Conjugated Highly Cross-Adsorbed(1583138) at 1/200 dilution for 40 min at 37 °C. Isotype control antibody (blue line) was rabbit IgG1 (1 µg/1x10<sup>6</sup> cells) used under the same conditions. Acquisition of >10,000 events was performed.



### Western Blotting

**Image 2.** Anti-LYK5 Antibody (N-term) at 1:1000 dilution + A549 whole cell lysate. Lysates/proteins at 20 µg per lane. Secondary Goat Anti-Rabbit IgG, (H+L), Peroxidase conjugated at 1/10000 dilution. Predicted band size : 48 kDa. Blocking/Dilution buffer: 5 % NFDm/TBST.



### Western Blotting

**Image 3.** The anti-LYK5 Pab (ABIN391217 and ABIN2841293) is used in Western blot to detect LYK5 in mouse brain tissue lysate.

Please check the [product details page](#) for more images. Overall 5 images are available for ABIN391217.