

Datasheet for ABIN391220

anti-MARK1 antibody (C-Term)**1** Image**1** Publication[Go to Product page](#)

Overview

Quantity:	400 µL
Target:	MARK1
Binding Specificity:	AA 671-700, C-Term
Reactivity:	Human, Mouse
Host:	Rabbit
Clonality:	Polyclonal
Conjugate:	This MARK1 antibody is un-conjugated
Application:	Western Blotting (WB)

Product Details

Immunogen:	This MARK1 antibody is generated from rabbits immunized with a KLH conjugated synthetic peptide between 671-700 amino acids from the C-terminal region of human MARK1.
Clone:	RB8547
Isotype:	Ig Fraction
Purification:	This antibody is prepared by Saturated Ammonium Sulfate (SAS) precipitation followed by dialysis against PBS.

Target Details

Target:	MARK1
Alternative Name:	MARK1 (MARK1 Products)

Target Details

Background:	MARK is a family of kinases that is known for its involvement in establishing cell polarity and in phosphorylating tau protein during Alzheimer neurodegeneration. Expression of MARK causes the phosphorylation of MAPs at their KXGS motifs, thereby detaching MAPs from the microtubules and thus facilitating the transport of particles. This occurs without impairing the intrinsic activity of motors because the velocity during active movement remains unchanged. In primary retinal ganglion cells, transfection with tau leads to the inhibition of axonal transport of mitochondria, APP vesicles, and other cell components which leads to starvation of axons and vulnerability against stress. This transport inhibition can be rescued by phosphorylating tau with MARK
Molecular Weight:	89003
Gene ID:	4139
NCBI Accession:	NP_061120
UniProt:	Q9P0L2
Pathways:	SARS-CoV-2 Protein Interactome , The Global Phosphorylation Landscape of SARS-CoV-2 Infection

Application Details

Application Notes:	WB: 1:1000
Restrictions:	For Research Use only

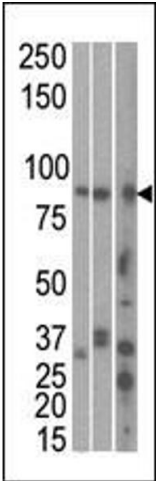
Handling

Format:	Liquid
Buffer:	Purified polyclonal antibody supplied in PBS with 0.09 % (W/V) sodium azide.
Preservative:	Sodium azide
Precaution of Use:	This product contains Sodium azide: a POISONOUS AND HAZARDOUS SUBSTANCE which should be handled by trained staff only.
Storage:	4 °C,-20 °C
Storage Comment:	Maintain refrigerated at 2-8 °C for up to 6 months. For long term storage store at -20 °C in small aliquots to prevent freeze-thaw cycles.
Expiry Date:	6 months

Publications

Product cited in: Hezel, Gurumurthy, Granot, Swisa, Chu, Bailey, Dor, Bardeesy, Depinho: "Pancreatic LKB1 deletion leads to acinar polarity defects and cystic neoplasms." in: **Molecular and cellular biology**, Vol. 28, Issue 7, pp. 2414-25, (2008) ([PubMed](#)).

Images



Western Blotting

Image 1. The anti-RK1 C-term Pab 7144b is used in Western blot to detect RK1 in, from left to right, HeLa, T47D, and mouse brain cell line/ tissue lysate.