



[Go to Product page](#)

Datasheet for ABIN391223
anti-MELK antibody (AA 201-230)

1 Image

Overview

Quantity:	400 µL
Target:	MELK
Binding Specificity:	AA 201-230
Reactivity:	Human
Host:	Rabbit
Clonality:	Polyclonal
Conjugate:	This MELK antibody is un-conjugated
Application:	Western Blotting (WB)

Product Details

Immunogen:	This MELK antibody is generated from rabbits immunized with a KLH conjugated synthetic peptide between 201-230 amino acids from the Central region of human MELK.
Clone:	RB8556
Isotype:	Ig Fraction
Purification:	This antibody is prepared by Saturated Ammonium Sulfate (SAS) precipitation followed by dialysis against PBS.

Target Details

Target:	MELK
Alternative Name:	MELK (MELK Products)

Target Details

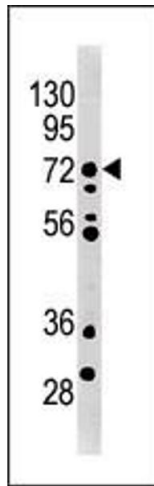
Background:	MELK contains 1 protein kinase domain that belongs to the Ser/Thr protein kinase family. It phosphorylates ZNF622 and may contribute to its redirection to the nucleus. MELK may also be involved in the inhibition of spliceosome assembly during mitosis.
Molecular Weight:	74642
Gene ID:	9833
NCBI Accession:	NP_001243614 , NP_001243616 , NP_001243617 , NP_001243618 , NP_001243619 , NP_001243621 , NP_001243622 , NP_055606
UniProt:	Q14680

Application Details

Application Notes:	WB: 1:1000
Restrictions:	For Research Use only

Handling

Format:	Liquid
Buffer:	Purified polyclonal antibody supplied in PBS with 0.09 % (W/V) sodium azide.
Preservative:	Sodium azide
Precaution of Use:	This product contains Sodium azide: a POISONOUS AND HAZARDOUS SUBSTANCE which should be handled by trained staff only.
Storage:	4 °C,-20 °C
Storage Comment:	Maintain refrigerated at 2-8 °C for up to 6 months. For long term storage store at -20 °C in small aliquots to prevent freeze-thaw cycles.
Expiry Date:	6 months



Western Blotting

Image 1. The anti-MRLK Pab (ABIN391223 and ABIN2841297) is used in Western blot to detect MRLK in mouse brain tissue lysate