

Datasheet for ABIN391250
anti-PGK1 antibody (AA 305-334)[Go to Product page](#)

2 Images

1 Publication

Overview

Quantity:	400 µL
Target:	PGK1
Binding Specificity:	AA 305-334
Reactivity:	Human
Host:	Rabbit
Clonality:	Polyclonal
Conjugate:	This PGK1 antibody is un-conjugated
Application:	Western Blotting (WB), Immunohistochemistry (Paraffin-embedded Sections) (IHC (p))

Product Details

Immunogen:	This PGK1 antibody is generated from rabbits immunized with a KLH conjugated synthetic peptide between 305-334 amino acids from the Central region of human PGK1.
Clone:	RB5517
Isotype:	Ig Fraction
Predicted Reactivity:	Pr
Purification:	This antibody is prepared by Saturated Ammonium Sulfate (SAS) precipitation followed by dialysis against PBS.

Target Details

Target:	PGK1
---------	------

Target Details

Alternative Name:	PGK1 (PGK1 Products)
Background:	Also known as ATP:3-phosphoglycerate 1-phosphotransferase, this major enzyme in glycolysis catalyzes the reversible conversion of 1,3-diphosphoglycerate to 3-phosphoglycerate, generating one molecule of ATP. Phosphoglycerate kinase not only functions in glycolysis but is secreted by tumor cells and is proposed to participate in the angiogenic process as a disulfide reductase. Mutations in PGK1 may be associated with hemolytic anemia.
Molecular Weight:	44615
Gene ID:	5230
NCBI Accession:	NP_000282
UniProt:	P00558
Pathways:	Cellular Glucan Metabolic Process

Application Details

Application Notes:	WB: 1:1000. IHC-P: 1:10~50
Restrictions:	For Research Use only

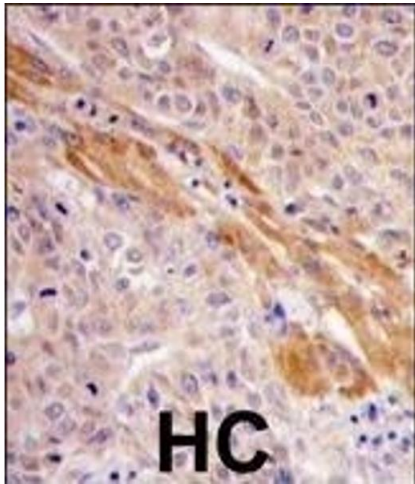
Handling

Format:	Liquid
Buffer:	Purified polyclonal antibody supplied in PBS with 0.09 % (W/V) sodium azide.
Preservative:	Sodium azide
Precaution of Use:	This product contains Sodium azide: a POISONOUS AND HAZARDOUS SUBSTANCE which should be handled by trained staff only.
Storage:	4 °C,-20 °C
Storage Comment:	Maintain refrigerated at 2-8 °C for up to 6 months. For long term storage store at -20 °C in small aliquots to prevent freeze-thaw cycles.
Expiry Date:	6 months

Publications

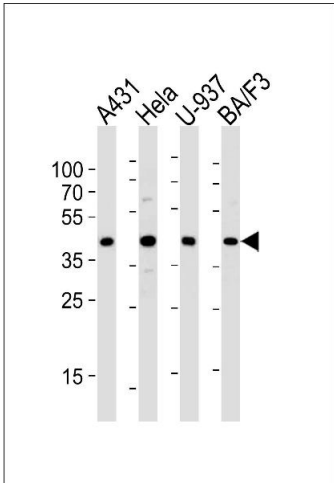
Product cited in:	Ewing, Chu, Elisma, Li, Taylor, Climie, McBroom-Cerajewski, Robinson, OConnor, Li, Taylor, Dharsee, Ho, Heilbut, Moore, Zhang, Ornatsky, Bukhman, Ethier, Sheng, Vasilescu, Abu-Farha,
-------------------	--

Lambert, Duewel et al.: "Large-scale mapping of human protein-protein interactions by mass spectrometry. ..." in: **Molecular systems biology**, Vol. 3, pp. 89, (2007) ([PubMed](#)).



Immunohistochemistry (Paraffin-embedded Sections)

Image 1. Formalin-fixed and paraffin-embedded human hepatocarcinoma tissue reacted with PGK1 Antibody (Center) (ABIN391250 and ABIN2837966) , which was peroxidase-conjugated to the secondary antibody, followed by DAB staining. This data demonstrates the use of this antibody for immunohistochemistry, clinical relevance has not been evaluated.



Western Blotting

Image 2. Western blot analysis of lysates from A431, HeLa, U-937, BA/F3 cell line (from left to right), using PGK1 Antibody (ABIN391250 and ABIN2837966). (ABIN391250 and ABIN2837966) was diluted at 1:1000 at each lane. A goat anti-rabbit IgG H&L(HRP) at 1:5000 dilution was used as the secondary antibody. Lysate at 35 µg per lane.