



[Go to Product page](#)

Datasheet for ABIN391253
anti-PIM3 antibody (C-Term)

3 Images

5 Publications

Overview

Quantity:	400 µL
Target:	PIM3
Binding Specificity:	AA 259-288, C-Term
Reactivity:	Human, Mouse
Host:	Rabbit
Clonality:	Polyclonal
Conjugate:	This PIM3 antibody is un-conjugated
Application:	Western Blotting (WB), Immunohistochemistry (Paraffin-embedded Sections) (IHC (p))

Product Details

Immunogen:	This PIM3 antibody is generated from rabbits immunized with a KLH conjugated synthetic peptide between 259-288 amino acids from the C-terminal region of human PIM3.
Clone:	RB8591
Isotype:	Ig Fraction
Predicted Reactivity:	Rat
Purification:	This antibody is prepared by Saturated Ammonium Sulfate (SAS) precipitation followed by dialysis against PBS.

Target Details

Target:	PIM3
---------	------

Target Details

Alternative Name:	PIM3 (PIM3 Products)
Background:	PIM3 is a member of the Ser/Thr protein kinase family that may be involved in cell cycle progression and anti-apoptosis process. This protein has been implicated in proliferation of human hepatoma cell lines. PIM3 is widely expressed, with the exception of no expression observed in colon, thymus, and small intestine. PIM3 is expressed in human hepatoma cell lines but not in normal liver tissues.
Molecular Weight:	35891
Gene ID:	415116
NCBI Accession:	NP_001001852
UniProt:	Q86V86
Pathways:	Negative Regulation of Hormone Secretion

Application Details

Application Notes:	WB: 1:1000. IHC-P: 1:10~50. IHC-P: 1:10~50
Restrictions:	For Research Use only

Handling

Format:	Liquid
Buffer:	Purified polyclonal antibody supplied in PBS with 0.09 % (W/V) sodium azide.
Preservative:	Sodium azide
Precaution of Use:	This product contains Sodium azide: a POISONOUS AND HAZARDOUS SUBSTANCE which should be handled by trained staff only.
Storage:	4 °C,-20 °C
Storage Comment:	Maintain refrigerated at 2-8 °C for up to 6 months. For long term storage store at -20 °C in small aliquots to prevent freeze-thaw cycles.
Expiry Date:	6 months

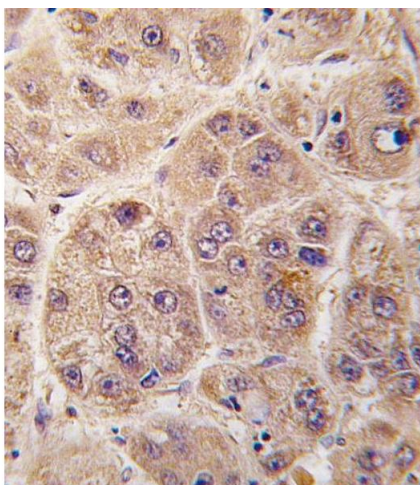
Publications

Product cited in:	Humphrey, Newcomb, Yu, Hao, Yu, Krajewski, Du, Jhala: "Mixed lineage kinase-3 stabilizes and functionally cooperates with TRIBBLES-3 to compromise mitochondrial integrity in cytokine-
-------------------	---

induced death of pancreatic beta cells." in: **The Journal of biological chemistry**, Vol. 285, Issue 29, pp. 22426-36, (2010) ([PubMed](#)).

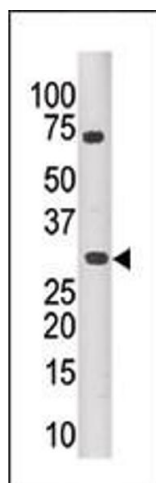
Nagao, Hayashi: "Mixed lineage kinase 2 and hippocalcin are localized in Lewy bodies of Parkinson's disease." in: **Journal of the neurological sciences**, Vol. 281, Issue 1-2, pp. 51-4, (2009) ([PubMed](#)).

Images



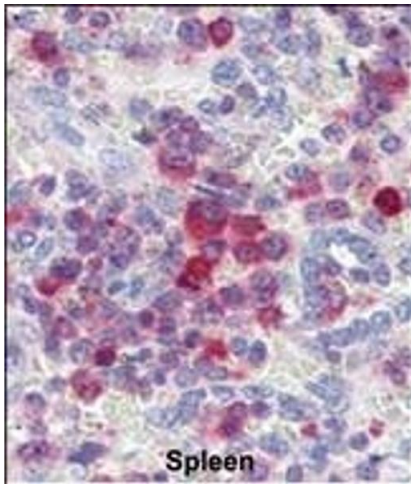
Immunohistochemistry (Paraffin-embedded Sections)

Image 1. Formalin-fixed and paraffin-embedded human hepatocarcinoma tissue reacted with PIM3 antibody (C-term) (ABIN391253 and ABIN2841313), which was peroxidase-conjugated to the secondary antibody, followed by DAB staining. This data demonstrates the use of this antibody for immunohistochemistry, clinical relevance has not been evaluated.



Western Blotting

Image 2. The anti-PIM3 Pab (ABIN391253 and ABIN2841313) is used in Western blot to detect PIM3 in mouse kidney tissue lysate.



Immunohistochemistry (Paraffin-embedded Sections)

Image 3. Formalin-fixed and paraffin-embedded human Spleen tissue reacted with PIM3 antibody (C-term) (ABIN391253 and ABIN2841313) , which was peroxidase-conjugated to the secondary antibody, followed by AEC staining. This data demonstrates the use of this antibody for immunohistochemistry, clinical relevance has not been evaluated.