



[Go to Product page](#)

Datasheet for ABIN391254

anti-PIKFYVE antibody (AA 1531-1561)

2 Images

1 Publication

Overview

Quantity:	400 µL
Target:	PIKFYVE
Binding Specificity:	AA 1531-1561
Reactivity:	Human
Host:	Rabbit
Clonality:	Polyclonal
Conjugate:	This PIKFYVE antibody is un-conjugated
Application:	Western Blotting (WB), Immunohistochemistry (Paraffin-embedded Sections) (IHC (p))

Product Details

Immunogen:	This PIP5K3 antibody is generated from rabbits immunized with a KLH conjugated synthetic peptide between 1531-1561 amino acids from the Central region of human PIP5K3.
Clone:	RB5311
Isotype:	Ig Fraction
Purification:	This antibody is prepared by Saturated Ammonium Sulfate (SAS) precipitation followed by dialysis against PBS.

Target Details

Target:	PIKFYVE
Alternative Name:	PIP5K3 (PIKFYVE Products)

Target Details

Background:	PIP5K3 belongs to a large family of lipid kinases that alter the phosphorylation status of intracellular phosphatidylinositol. Signaling by phosphorylated species of phosphatidylinositol regulates diverse cellular processes, including membrane trafficking and cytoskeletal reorganization.
Molecular Weight:	237136
Gene ID:	200576
NCBI Accession:	NP_001171471 , NP_055855 , NP_689884
UniProt:	Q9Y2I7
Pathways:	Inositol Metabolic Process

Application Details

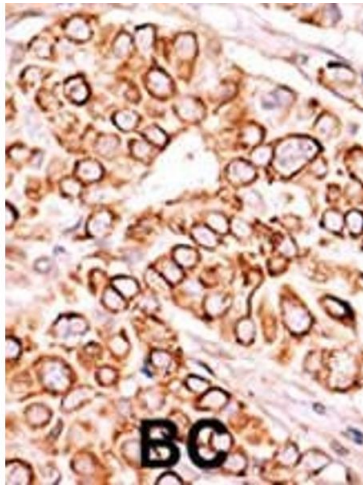
Application Notes:	WB: 1:1000. IHC-P: 1:50~100
Restrictions:	For Research Use only

Handling

Format:	Liquid
Buffer:	Purified polyclonal antibody supplied in PBS with 0.09 % (W/V) sodium azide.
Preservative:	Sodium azide
Precaution of Use:	This product contains Sodium azide: a POISONOUS AND HAZARDOUS SUBSTANCE which should be handled by trained staff only.
Storage:	4 °C,-20 °C
Storage Comment:	Maintain refrigerated at 2-8 °C for up to 6 months. For long term storage store at -20 °C in small aliquots to prevent freeze-thaw cycles.
Expiry Date:	6 months

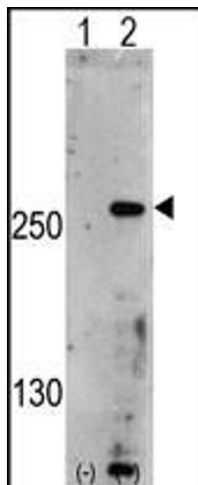
Publications

Product cited in:	Bolomini-Vittori, Montresor, Giagulli, Staunton, Rossi, Martinello, Constantin, Laudanna: "Regulation of conformer-specific activation of the integrin LFA-1 by a chemokine-triggered Rho signaling module." in: Nature immunology , Vol. 10, Issue 2, pp. 185-94, (2009) (PubMed).
-------------------	--



Immunohistochemistry (Paraffin-embedded Sections)

Image 1. Formalin-fixed and paraffin-embedded human cancer tissue reacted with the primary antibody, which was peroxidase-conjugated to the secondary antibody, followed by AEC staining. This data demonstrates the use of this antibody for immunohistochemistry, clinical relevance has not been evaluated. BC = breast carcinoma, HC = hepatocarcinoma.



Western Blotting

Image 2. Western blot analysis of PIP5K3 (arrow) using rabbit polyclonal PIP5K3 Antibody (Center) (ABIN391254 and ABIN2841314). 293 cell lysates (2 µg/lane) either nontransfected (Lane 1) or transiently transfected with the PIP5K3 gene (Lane 2) (Origene Technologies).